

MIT Joint Program on the Science and Policy of Global Change



Process Modeling of Global Soil Nitrous Oxide Emissions

Eri Saikawa, C. Adam Schlosser, and Ronald G. Prinn

**Report No. 206
October 2011**

The MIT Joint Program on the Science and Policy of Global Change is an organization for research, independent policy analysis, and public education in global environmental change. It seeks to provide leadership in understanding scientific, economic, and ecological aspects of this difficult issue, and combining them into policy assessments that serve the needs of ongoing national and international discussions. To this end, the Program brings together an interdisciplinary group from two established research centers at MIT: the Center for Global Change Science (CGCS) and the Center for Energy and Environmental Policy Research (CEEPR). These two centers bridge many key areas of the needed intellectual work, and additional essential areas are covered by other MIT departments, by collaboration with the Ecosystems Center of the Marine Biology Laboratory (MBL) at Woods Hole, and by short- and long-term visitors to the Program. The Program involves sponsorship and active participation by industry, government, and non-profit organizations.

To inform processes of policy development and implementation, climate change research needs to focus on improving the prediction of those variables that are most relevant to economic, social, and environmental effects. In turn, the greenhouse gas and atmospheric aerosol assumptions underlying climate analysis need to be related to the economic, technological, and political forces that drive emissions, and to the results of international agreements and mitigation. Further, assessments of possible societal and ecosystem impacts, and analysis of mitigation strategies, need to be based on realistic evaluation of the uncertainties of climate science.

This report is one of a series intended to communicate research results and improve public understanding of climate issues, thereby contributing to informed debate about the climate issue, the uncertainties, and the economic and social implications of policy alternatives. Titles in the Report Series to date are listed on the inside back cover.


Ronald G. Prinn and John M. Reilly
Program Co-Directors

For more information, please contact the Joint Program Office

Postal Address: Joint Program on the Science and Policy of Global Change
77 Massachusetts Avenue
MIT E19-411
Cambridge MA 02139-4307 (USA)

Location: 400 Main Street, Cambridge
Building E19, Room 411
Massachusetts Institute of Technology

Access: Phone: +1(617) 253-7492
Fax: +1(617) 253-9845
E-mail: globalchange@mit.edu
Web site: <http://globalchange.mit.edu/>

 Printed on recycled paper

Process Modeling of Global Soil Nitrous Oxide Emissions

Eri Saikawa^{*†}, C. Adam Schlosser^{*}, and Ronald G. Prinn^{*}

Abstract

Nitrous oxide is an important greenhouse gas and is a major ozone-depleting substance. To understand and quantify soil nitrous oxide emissions, we expanded the Community Land Model with prognostic Carbon and Nitrogen (CLM-CN) by inserting a module to estimate annually- and seasonally-varying nitrous oxide emissions between 1978 and 2000. We evaluate our soil N₂O emission estimates against existing emissions inventories, other process-based model estimates, and observations from two forest sites in the Amazon and one in the United States. The model reproduces soil temperature and soil moisture relatively well, and it reconfirms the important relationship between N₂O emissions and these parameters. The model also reproduces observations of N₂O emissions well in the Amazonian forests but not during the winter in the USA. Applying this model to estimate the past 23 years of global soil N₂O emissions, we find that there is a significant decrease in soil N₂O emissions associated with drought and El Niño years. More study is necessary to quantify the high-latitude winter activity in the model in order to better understand the impact of future climate on N₂O emissions and vice versa.

Contents

1. INTRODUCTION.....	1
2. METHODS.....	3
2.1 Model.....	3
2.2 Measurement Data.....	4
2.3 Emissions Inventory Data.....	5
3. SIMULATIONS AND EVALUATIONS.....	5
3.1 Model-Observation Comparison.....	5
4. SOIL N ₂ O EMISSIONS FLUX ESTIMATE.....	11
4.1 Seasonal Emissions Variation.....	11
4.2 Inter-annual Flux Estimate.....	11
5. CONCLUDING REMARKS.....	24
6. REFERENCES.....	24

1. INTRODUCTION

Nitrous oxide (N₂O) is a major greenhouse gas with a Global Warming Potential of 300 in a 100-year time horizon (Forster *et al.*, 2007). Furthermore, its emissions weighted by ozone depletion potential currently dominate those of ozone-depleting substances after the decline of the chlorofluorocarbon (CFC) emissions (Ravishankara *et al.*, 2009). In addition, measurements of atmospheric N₂O mole fractions since the late 1970s show an increase (with a drop in 1992-1993) at a rate of 0.2-0.3% per year (Weiss, 1981; Prinn *et al.*, 1990; Nevison *et al.*, 1996). Despite a large number of studies in the last several decades examining the cause of this increase, large uncertainties still remain (Nevison *et al.*, 1996; Forster *et al.*, 2007; Huang *et al.*, 2008). Partially, this is due to diverse sources, both natural and anthropogenic. Recent increase in the atmospheric mole fractions has led to an estimation of the anthropogenic source to be approximately 1/3 of the

^{*} Center for Global Change Science and Joint Program of the Science and Policy of Global Change, Massachusetts Institute of Technology, Cambridge, MA.

[†] Corresponding author (Email: esaikawa@mit.edu)

total N₂O source (Khalil *et al.*, 2002; Hirsch *et al.*, 2006; Nevison *et al.*, 2007). However, microbial production in soils is still considered to be the largest producer of N₂O (Davidson, 2009). Understanding and quantifying N₂O fluxes from global soil in long time series is therefore an urgent task for predicting the future climate change and stratospheric ozone depletion (Forster *et al.*, 2007).

The bacterial processes of nitrification and denitrification are considered to be the most important source of N₂O emissions from soil. Microbial biomass decomposes in soil and creates ammonium ion (NH₄⁺), which is converted to nitrate (NO₃⁻) by the nitrification process in aerobic conditions. A small fraction of NO₃⁻ leaks to produce N₂O. In anaerobic conditions, NO₃⁻ is converted to N₂O and nitrogen gas (N₂) by denitrifying bacteria (Goreau *et al.*, 1980; Bremner and Blackmer, 1981; Poth and Focht, 1985; Nevison *et al.*, 1996). This nitrification and denitrification has been stimulated further by the increasing use of synthetic nitrogen fertilizers for food production (Davidson, 2009).

The mechanism of N₂O emissions from soil has been studied in several process models (Li *et al.*, 1992; Bouwman *et al.*, 1993; Potter *et al.*, 1996), but so far no model has been able to capture the long-term trend of soil N₂O emissions, including the details of seasonality and inter-annual variability at the global grid level. In this paper we present and evaluate a modified version of the Community Land Model version 3.5 (CLM v3.5), as explained by Oleson *et al.* (2008) and Stöckli *et al.* (2008), in order to better understand the seasonality and inter-annual variability of global natural soil N₂O emissions.

CLM v3.5 is the land component of the Community Earth System Model (CESM), which is designed to study inter-annual and inter-decadal variability, paleoclimate regimes, and projections of future climate change (Collins *et al.*, 2006; Oleson *et al.*, 2008). With a coupled carbon-nitrogen (CN) biogeochemical model (Thornton *et al.*, 2007; Randerson *et al.*, 2009; Thornton *et al.*, 2009) based on the terrestrial biogeochemistry Biome-BGC model (Thornton *et al.*, 2002; Thornton and Rosenbloom, 2005), the CLM-CN model represents land terrestrial water, carbon (C) and nitrogen (N) balances, and it is nominally run at an hourly time scale (Lawrence *et al.*, 2011).

Here, we add a new N₂O emissions flux module within CLM-CN v3.5 to create CLMCN-N₂O. CLMCN-N₂O includes the DeNitrification-DeComposition (DNDC) Biogeochemistry Model (Li *et al.*, 1992) to capture both the nitrification and denitrification processes that are important producers of N₂O. CLMCN-N₂O utilizes the soil C and N concentrations in soil as calculated by CLM-CN, but also estimates NH₄⁺ produced by decomposition and calculates N₂O production through nitrification and denitrification depending on temperature and soil moisture.

The main objectives of this study were: (1) to build and validate the soil N₂O emissions module in CLM-CN; (2) to quantify global natural soil N₂O emissions between 1978 and 2000; and (3) to understand the effects of meteorology on seasonal and inter-annual natural soil N₂O emissions. We first estimate the global natural N₂O emissions from 1978 to 2000 and analyze the trend in annual and seasonal emissions in different regions. We use three separate forcing data sets (described in Section 2.2) to compare our N₂O emissions estimates due to given

meteorological conditions. Next, we evaluate CLMCN-N₂O by comparing our estimated N₂O emissions with observations from field measurements in forests in the Amazon and in the USA. Finally, we analyze the impact of meteorology on regional emissions by paying special attention to the role of El Niño and drought.

The paper is organized as follows. Section 2 describes the methodologies we use, including the model development and the observational data for this study. Section 3 explains the model simulation and the comparison with observations. Section 4 provides an analysis of the impact of El Niño and drought on soil N₂O emissions. We present a summary of results and conclude in Section 5.

2. METHODS

2.1 Model

CLMCN-N₂O is based on the CLM v3.5 model (Oleson *et al.*, 2008; Stöckli *et al.*, 2008) including the carbon-nitrogen (CN) biogeochemical model (Thornton *et al.*, 2007; Randerson *et al.*, 2009; Thornton *et al.*, 2009). CLM-CN simulates terrestrial water, C and N budgets for each plant functional types (PFTs) from hourly to decadal time series. The model can be run on any regular grid and here we run at a horizontal resolution of 1.9° latitude and 2.5° longitude. For each PFT and each spatial unit, CLM-CN balances soil C and N between four soil organic matter pools of differing decomposability (i.e., fast, medium, slow and slowest), three litter pools (i.e., labile, cellulose and lignin), and a soil mineral N pool. CLMCN-N₂O includes pools of N₂O, NO₃⁻, NH₃ and NH₄⁺, and treats N inputs from atmospheric deposition, biological N fixation, N losses to NH₄⁺ and NO₃⁻ leaching. It simulates N₂O emissions due to nitrification and denitrification at an hourly time step.

NH₄⁺ is produced via biomass decomposition. As both labile and resistant microbial biomass pools decompose, some new biomass is created, while others are transferred to resistant humads and the others produce CO₂. In this process of decomposition, NH₄⁺ is also produced. Some of the produced NH₄⁺ is dissolved into NH₃, a part of which then volatilizes. Nitrification is temperature and moisture dependent and it only takes place under the aerobic state. During the nitrification process, NO₃⁻ is produced from NH₄⁺, and in between, N₂O is also released.

Denitrification, a process converting NO₃⁻ into N₂, is also temperature and soil moisture dependent and it takes place under the anaerobic state. The growth rate of denitrifiers, NO₃⁻, nitrite (NO₂⁻), and N₂O, is controlled by the ratio of the soluble C in saturated soil layer to the total soil C as well as the ratio of each denitrifier to the total soil N. The dynamics of the soil C pool are calculated in CLM-CN using the converging cascade structure (Thornton and Rosenbloom, 2005). The litter C are defined in three litter pools based on each PFT, and these litters go through either respiration or decomposition with specific rates assigned for each pool, depending on PFT. The dynamics of the soil N pool are calculated in CLM-CN based on the C:N ratio specified by PFT. Under the anaerobic condition, which is triggered in the model by the rain event and when soil moisture is greater than 50%, NO₃⁻ is first converted into NO₂⁻, which is next converted to NO, then to N₂O and finally to N₂. The three denitrifier consumption is

controlled by the relative growth of denitrifiers, the amount of existing denitrifiers in soil, total soil N, soil pH, and soil temperature. Net increase in soil N₂O is thus determined from these denitrifier syntheses.

We use N deposition data as estimated by Community Atmosphere Model (CAM) for year 2000. Mineral N deposition is one of the pathways for N addition in the model. The flux is prescribed as an annual rate and is kept constant over the duration of the model run. It is applied daily to the soil mineral N pool. Our N deposition data would include the indirect effect of fertilizer use in agricultural lands, but we consider this to be a negligible effect based on Mosier *et al.* (1998) that the mean estimated emissions of N₂O from atmospheric deposition is 0.3 (0.06-0.6) Tg N₂O-N yr⁻¹.

2.2 Measurement Data

Several N₂O emissions flux measurements were used to verify the CLMCN-N₂O model. One is taken at the Tapajós National Forest in east central Amazonia (2.90°S, 54.95°W), as described in Davidson *et al.* (2004, 2008). Precipitation, volumetric water content (VWC) of the top 2m of soil and N₂O emissions flux under normal as well as the drought experimental condition were available at this site between 1999 and 2005. For the drought experiment, throughfall was excluded from the measurement site during the rainy seasons from January to June. The experiment lasted for 5 years between 2000 and 2004 in a large area (1ha) within a 20ha forest.

Another measurements were taken monthly at Fazenda Vitoria from 1995 February to 1996 May. The Fazenda Vitoria forest is located in eastern Amazonia, near Paragominas (2.98°S, 47.52°W) as described in Verchot *et al.* (1999). Precipitation and soil water content in the top 30cm of the soil for primary forest and active pasture were available at the site as well as the N₂O emissions flux in four different ecosystems - primary forest, secondary forest, degraded pasture and active pasture. Primary forest is the forest stand that has not gone through major disturbance (e.g. clearing or fire) during the last couple of centuries. The secondary forest refers to the naturally regenerated forest from a pasture, which was abandoned in 1976. Degraded pasture is mainly covered with shrubby regeneration as a result of the clearing in 1969. The pasture was abandoned in 1990 after having been heavily grazed until the early 1980s and then intermittently for a while after that. Active pasture has undergone similar land use history as the degraded pasture until 1987, but it was since “reformed” by having been cleared, burned, disked, fertilized, and planted.

Third, we used measurements from the White Mountain National Forest in New Hampshire, USA (43.93°S, 71.75°W), as described in Groffman *et al.* (2006). Soil temperature and volumetric soil moisture as well as N₂O emissions flux were available from fall 1997 to spring 2000. The forest is dominated by American beech (*Fagus grandiflora*), sugar maple (*Acer saccharum*), and yellow birch (*Betula alleghaniensis*). The main objective of their study was to conduct snow manipulation to understand the relationships between snow depth, soil freezing and forest biogeochemistry. They took measurements in four stands, and created two 10m x 10m plots at each - with and without snow manipulation. In this paper, we only use their reference data that

has not gone through any snow manipulation.

2.3 Emissions Inventory Data

We also compare the model results with two existing emissions inventory for global natural soil emissions. One is GEIA v1 in which an estimate of global N₂O emissions from soils under natural vegetation and arable lands (without the effects of anthropogenic N inputs) are calculated using the model by Bouwman *et al.* (1993), as described in Bouwman *et al.* (1995). Bouwman *et al.* (1993) uses the “process pipe” or “hole in the pipe” concept (Firestone and Davidson, 1989; Davidson, 1991), and calculates the soil NO and N₂O emissions flux simultaneously. In the model, total soil N availability determines the total N gas production, and the soil water content determines the ratio of N₂O to NO emitted to the atmosphere. GEIA v1 provides annual global soil N₂O emissions with 1° x 1° resolution for the year 1990.

Another inventory we compare our results with is the Carnegie-Ames-Stanford (CASA) Biosphere model (Potter *et al.*, 1996). CASA simulates natural soil N₂O emissions as well as daily and seasonal patterns in C fixation, nutrient allocation, litterfall, soil N mineralization and CO₂ exchange, similar to CLMCN-N₂O. This model provides a monthly global soil N₂O emissions with 1° x 1° resolution for the year 1990.

3. SIMULATIONS AND EVALUATIONS

In order to estimate annual and monthly global soil N₂O emissions flux from 1978 to 2000, the CLMCN-N₂O was run with three climate data sets: 1) NCEP Corrected by CRU (NCC): a 53-year data set based on the National Centers for Environmental Prediction/National Center for Atmospheric Research (NCEP/NCAR) reanalysis (Ngo-Duc *et al.*, 2005); 2) Climate Analysis Section (CAS): a 54-year data set also based on the NCEP/NCAR reanalysis (Qian *et al.*, 2006); and 3) Global Offline Land-Surface Dataset (GOLD): a 21-year data set which combines the reanalysis with monthly observations (Dirmeyer and Tan, 2001). Each data set provides air temperature, humidity, wind speed, surface pressure, precipitation and solar radiation to run CLM.

To implement the CLMCN-N₂O simulation, we conducted the equilibrium run, followed up by a transient run. For the equilibrium run, we used a 26-year repeating climate of 1949-1974 to drive the model to reach an equilibrium state. After running the model for 1300 years, we have determined that the model was at an equilibrium by confirming that an annual carbon storage change less than 1gC m⁻² year⁻¹ was reached and the imbalance in the plant N cycle was approximately 1%, as specified in McGuire *et al.* (1992) and Lin *et al.* (2000), respectively. From the equilibrated state, we ran the model for 26 years (1975-2000) for NCC, CAS and GOLD, using the respective forcing data of matching years. We used the first 3 years (1975-1977) of the transient run to be a spin-up and only analyzed years between 1978 and 2000. Annually-varying meteorology with a constant N deposition for the year 2000 was used for all simulations.

3.1 Model-Observation Comparison

In order to evaluate our model, we first compare several forcing parameters for both model results and observations. There are three important parameters to estimate soil N₂O emissions,

which are: precipitation, VWC, and soil temperature. Precipitation is essential to achieve anaerobic condition for denitrification to start in the model. VWC determines anaerobic condition for denitrification. Soil temperature affects the amount of soil N₂O emissions emitted to the atmosphere in both nitrification and denitrification processes.

We first conduct comparisons with two Amazon measurements. One is from the Tapajós National Forest in east central Amazonia between 1999 and 2000 (Davidson *et al.*, 2004, 2008), and the other is from Fazenda Vitoriá between 1995 February and 1996 May (Verchot *et al.*, 1999). **Figure 1** illustrates that our meteorological forcing agrees with the observed precipitation values quite well, although there are some visible underestimations in winter in the Tapajós National Forest and in spring in Fazenda Vitoriá. Correlation coefficients are 0.80 and 0.90, and

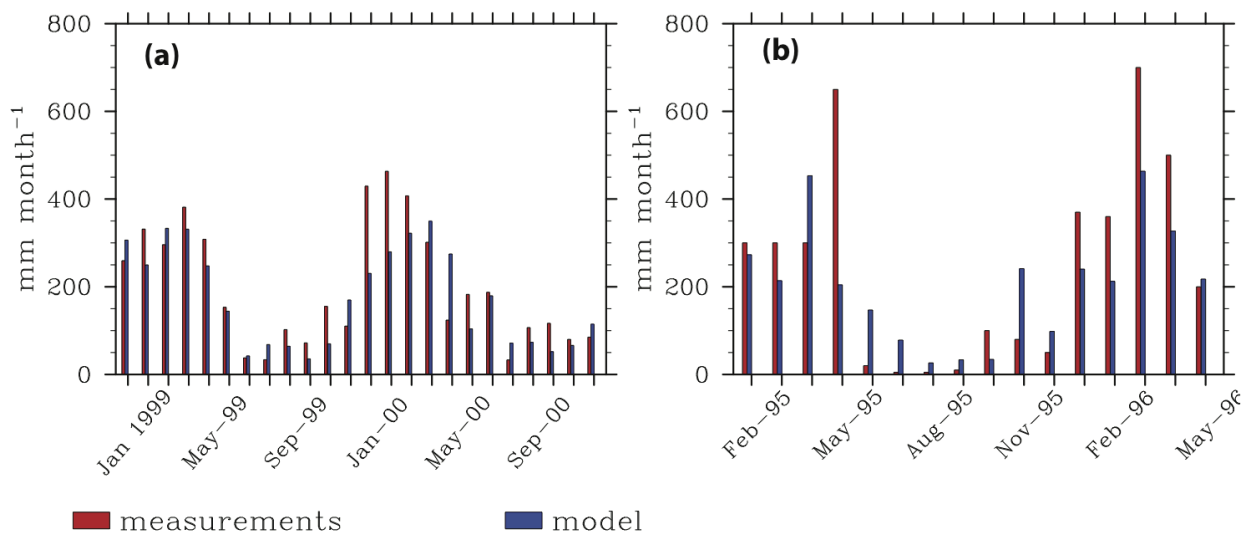


Figure 1. Comparison of precipitation between (a) observations in the Tapajós National Forest and model and (b) observations in the Fazenda Vitoriá and model in mm month⁻¹.

root mean squared errors (RMSE) are 82mm and 101mm at the former and latter sites, respectively. The precipitation from the reanalyses tends to capture the seasonality of precipitation at these sites, as confirmed by high correlation coefficients.

The model results are also able to reproduce the VWC well at the Tapajós site (**Figure 2(a)**). Davidson *et al.* (2008) has conducted a 5-year throughfall exclusion experiment (drought) as well as no exclusion (reference) as mentioned in Section 2.2, so we compare our model results with both. Correlation coefficients are 0.70 and 0.83, and root mean squared errors (RMSE) are 139mm and 96mm when model results are compared with drought and reference, respectively. Our model overestimates the value compared to observations, but is consistent with the range of modeled uncertainty seen in previous multi-model comparisons (Dirmeyer *et al.*, 2006). Soil temperature was not available at these sites to compare with our results.

We also conduct comparisons with measurements at the White Mountain National Forest in New Hampshire, USA (Groffman *et al.*, 2006). In their study, Groffman *et al.* (2006) manipulated

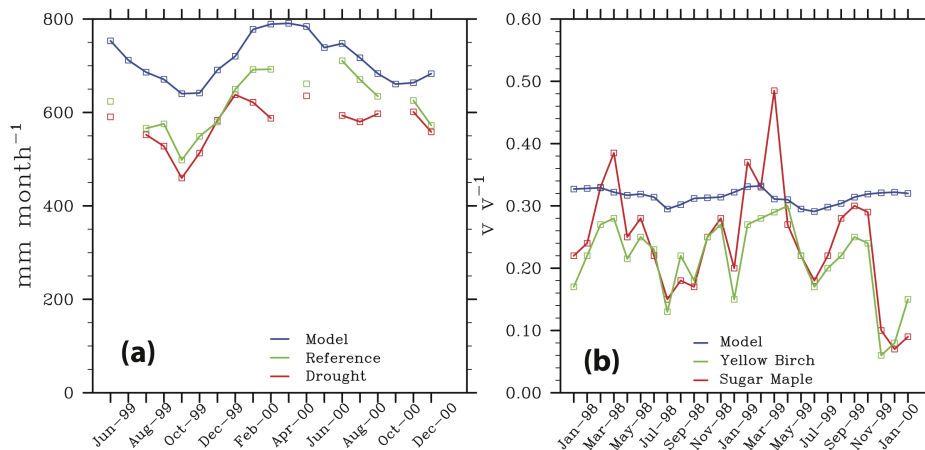


Figure 2. Comparison of volumetric water content of (a) top 2m of soil between observations in the Tapajós National Forest and model in mm month^{-1} and (b) top 10cm between observations in the White Mountain National Forest and model in v v^{-1} .

snow depth to induce soil freezing in order to understand the impact of frozen soil on soil N_2O emissions flux. In this paper, we compare their reference VWC measurements at sugar maple and yellow birch stands without the snow manipulation. These are different northern hardwood forest vegetation, and the soils are shallow (75-100cm) and acidic (pH 3.9) for both types of stands.

As Figure 2(b) illustrates, the model results do not represent the observations very well. Correlation coefficients are 0.23 and 0.13, and root mean squared errors (RMSE) are 0.11 v v^{-1} and 0.12 v v^{-1} when model results are compared with soils planted with sugar maple and yellow birch, respectively. The model constantly overestimates the volumetric soil water content compared to the observations of the soil with yellow birch, and it is not able to trace the seasonality that is visible at this site. This discrepancy is, in large part, due to the shallow depth of the soil-moisture considered (10 cm) and the fact that CLM tracks the macro-scale variations of the soil hydrothermal profile - allowing for multiple vegetation types to compete with the same soil-column water.

The model, however, represents the soil temperature well at the White Mountain National Forest, as seen in **Figure 3**. Correlation coefficients are 0.91 and 0.93, and root mean squared errors (RMSE) are 3.53°C and 3.63°C when model results are compared with sugar maple and yellow birch branches, respectively. The model slightly overestimates the temperature, but it is able to reproduce the seasonal cycle quite well.

At the above-mentioned three sites, we compare soil N_2O emissions with our modeled estimates. As explained in Section 4, because model results applying NCC forcing dataset represent the average estimates of the three simulations, we use them for further analysis. At the Tapajós National Forest, we also compare the relationship between VWC and soil N_2O emissions flux between the observations and the model. **Figure 4(a)** illustrates the comparison of the relationship between VWC and soil N_2O emissions for model results (green) and observations (reference in blue and drought experiment in red). The lines show the best fit of the data for

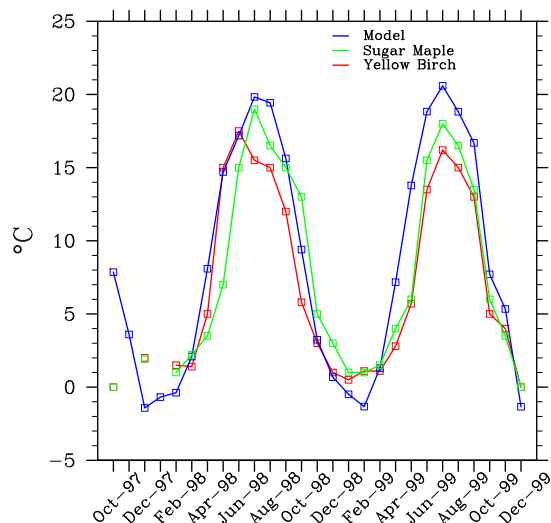


Figure 3. Comparison of soil temperature at 10cm depth between observations (sugar maple and yellow birch branches) and model in White Mountain National Forest in °C.

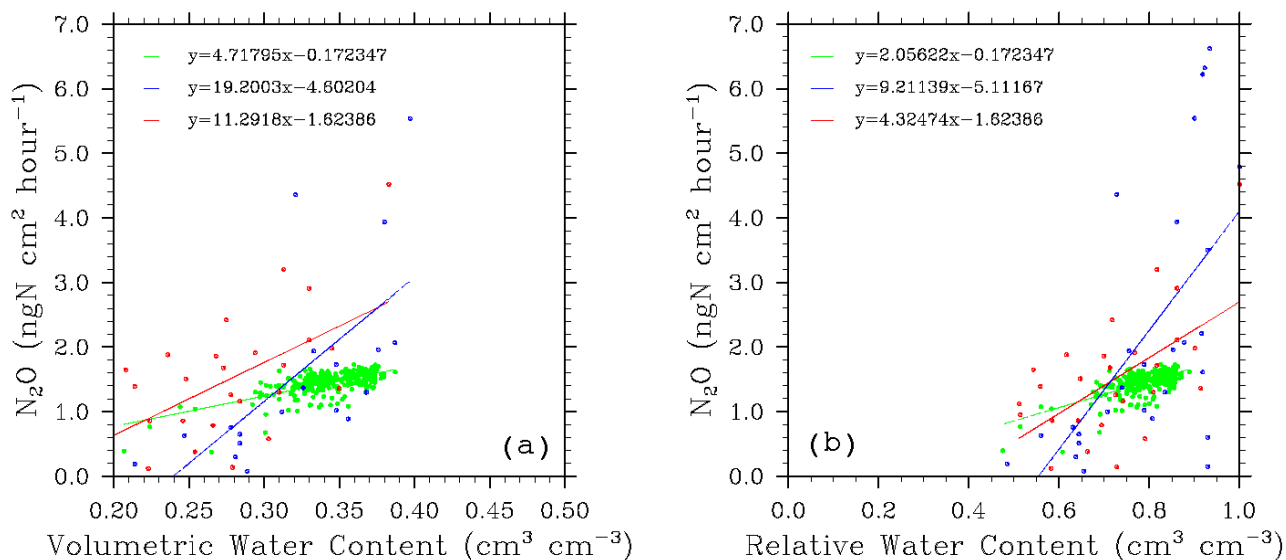


Figure 4. Comparison of the relationship between N_2O fluxes (model (green) and observations (drought (red) and reference (blue))) in $ngN\ cm^{-2}\ hour^{-1}$ and (a) volumetric water content of the top 30 cm soil with nitrous oxide in $cm^3\ cm^{-3}$ and (b) relative water content of the top 30 cm soil with nitrous oxide in $cm^3\ cm^{-3}$.

modeled estimates, reference and drought experiment, respectively, shown in the same colors as the data. The model results are clustered around VWC between 0.29 and 0.38, whereas the observations are more scattered, and as for the reference case, there are VWC values over 0.407 - the model maximum value in this grid cell. Observed soil N₂O emissions vary from less than 0.2 to more than 6.6 when VWC is approximately 0.41. However, the model is not able to reproduce these observations close to saturation, and it shows a much stronger control of soil moisture on N₂O flux.

Figure 4(b) illustrates the comparison of the relationship between N₂O emissions and relative water content for model results and observations. These compare better than the relationship between N₂O emissions and VWC, as we are able to put soil moisture from model and observations on the same scale by taking porosity into account. The model reproduces the soil N₂O emissions under water-stress condition (i.e. drought) better than the reference case. Some other environmental conditions (e.g. temperature, precipitation frequency, soil-carbon content, etc.) apart from soil moisture may be playing a role for such diverse soil N₂O emissions that we see for the reference case close to saturation. However, it is most likely that this discrepancy is due to comparing a global model estimates against instantaneous measurements. There are large differences between the two in terms of a grid scale and time - while the model estimates a value within a horizontal grid scale of 1.9° latitude and 2.5° longitude every hour, instantaneous measurements are conducted either monthly or bimonthly within eight 10m x 10m plots. There are also errors associated with measurements, and it is not surprising that the results do not match perfectly.

Figure 5 compares the modeled and observed (primary forest and secondary forest) soil N₂O emissions in Fazenda Vitoriá. The model reproduces the observations at the secondary forest quite well, and the correlation coefficient for the latter is 0.52 with an RMSE of 0.67 ngN cm⁻² hour⁻¹. Slight overestimation is found between June and August, but the model reproduces the values well even compared with the primary forest site between May and December. There are several reasons why the model is unable to reproduce high N₂O emissions from the primary forest. The first is the same as the reason mentioned above, and it is due to the difference in grid scale and time. The second is due to the PFT considered at this specific grid cell. We have four PFT types on the grid cell that we analyze on Figure 5, and they include C4 grass, broadleaf evergreen tropical tree, broadleaf deciduous tropical tree, and corn. Primary forest is the forest that has never gone through human intervention, whereas secondary forest has, and thus it is closer to the PFT types specified for the grid cell. It is therefore very possible that, under these PFT types, we are unable to resolve the high emissions as estimated from the measurement.

Figure 6 illustrates the modeled and observed (sugar maple and yellow birch branches) soil N₂O emissions flux in the White Mountain National Forest. In our model, there is a clear seasonality, with maximum in the growing season and negligible emissions in winter. The measurements in the White Mountain National Forest focused on emissions in winter, so the only comparison available here is during December through April from 1998 to 2000. For the observations, a large variation in emissions in the winter months are seen. Groffman *et al.* (2006)

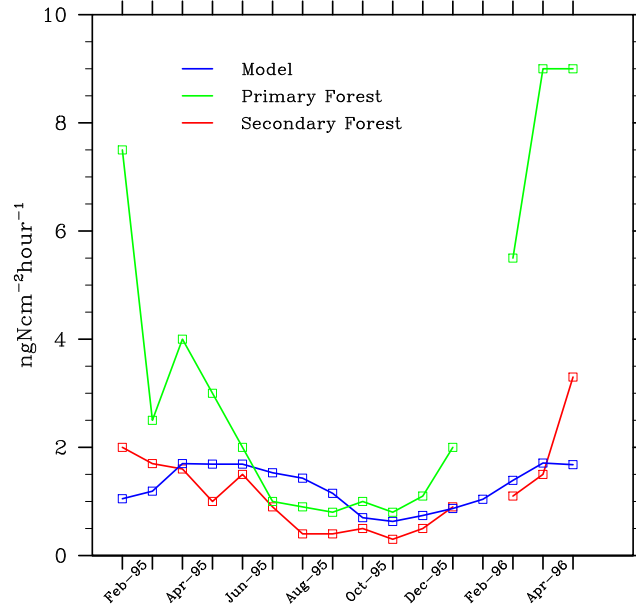


Figure 5. Comparison of soil N₂O emissions flux between observations (primary forest and secondary forest) and model in Fazenda Fazenda Vitoria in ngN cm⁻² hour⁻¹.

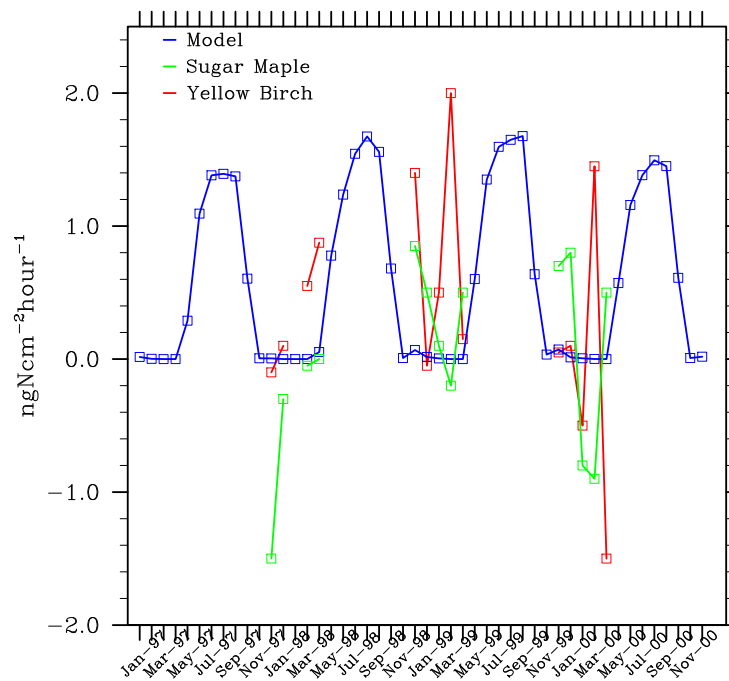


Figure 6. Comparison of soil N₂O emissions flux between observations (sugar maple and yellow birch) and model in White Mountain, USA in ngN cm⁻² hour⁻¹.

finds that increasing soil freezing enhances soil N₂O emissions flux, and that winter fluxes are important. In our current model setup, there are no soil N₂O emissions when soil temperature is below 0°C, based on the DNDC model. However, as Kielland *et al.* (2006) has suggested, labile substrate production might be more important than temperature for soil N₂O production, which

needs to be explored in the future. Moreover, the observations also indicate that there are conditions resulting in N₂O uptake, which most N₂O emission models would be unable to capture. More research is needed to enhance our understanding of the winter fluxes, as this might be an important emission source of N₂O exchange.

4. SOIL N₂O EMISSIONS FLUX ESTIMATE

4.1 Seasonal Emissions Variation

Figure 7 shows the estimated global natural soil N₂O emissions flux for the year 2000. The global spatial distribution of monthly N₂O emissions flux from the CLMCN-N₂O model suggests that high emissions flux originate in South America, Southern Africa, and Southeast Asia in the northern hemisphere spring and winter, whereas high emissions originate in equatorial regions and Northesatern America, Europe as well as South Eastern Asia in the northern hemisphere summer and fall. There is a clear seasonality especially in the Northern Hemisphere, where there are only little emissions in winter, whereas high emissions of more than 1 Gg/month are visible in the summer.

We compare our model estimates using NCC forcing dataset for 1990 with GEIA v1 (**Figure 8**) and with CASA (**Figure 9**) emissions. From **Figure 8**, we notice that our model has lower emissions than GEIA over most equatorial land areas. However, in **Figure 9**, a different pattern is found. Here, our model produces higher emission rates in sub-Saharan Africa, Northeastern China, and South Asia from July to November, with respect to the CASA estimates.

Considering that we see higher simulated emissions mainly in agricultural regions and the down wind areas including the eastern U.S. in August and September, we have conducted a sensitivity study by reducing our N deposition data in the eastern U.S. by 35% to assess the impact of indirect fertilizer emissions. The reduction in N deposition, however, did not affect model simulation results, confirming that the indirect effect of fertilizer emissions is indeed small. Comparing the two figures (**Figures 8 and 9**), we do not see a systematic bias in our model results, and it is not too surprising that we see the largest discrepancies to other model estimates in Africa. As Bouwman *et al.* (1995) notes, there is a lack of measurements in Africa, and it remains difficult to calibrate model results for the region.

4.2 Inter-annual Flux Estimate

The CLMCN-N₂O model estimates global average soil N₂O emissions flux for years between 1978 and 2000 to be 8.15, 8.90, and 7.49 Tg N₂O-N year⁻¹, when using NCC, CAS and GOLD forcing datasets, respectively. **Figure 10** shows the inter-annual variability of global total natural soil N₂O emissions flux as estimated by the model using the three different forcing datasets. When we calculate the regional distribution based on **Figure 11** for year 2000, more than 20% and 35% of the global emissions originate in Africa and Asia, respectively (**Table 1**). The trend of inter-annual variability and spatial distribution of the emissions are similar among the results using the different forcing datasets.

The estimated global total soil N₂O emissions (7.49-8.90 Tg N₂O-N year⁻¹) matches with the

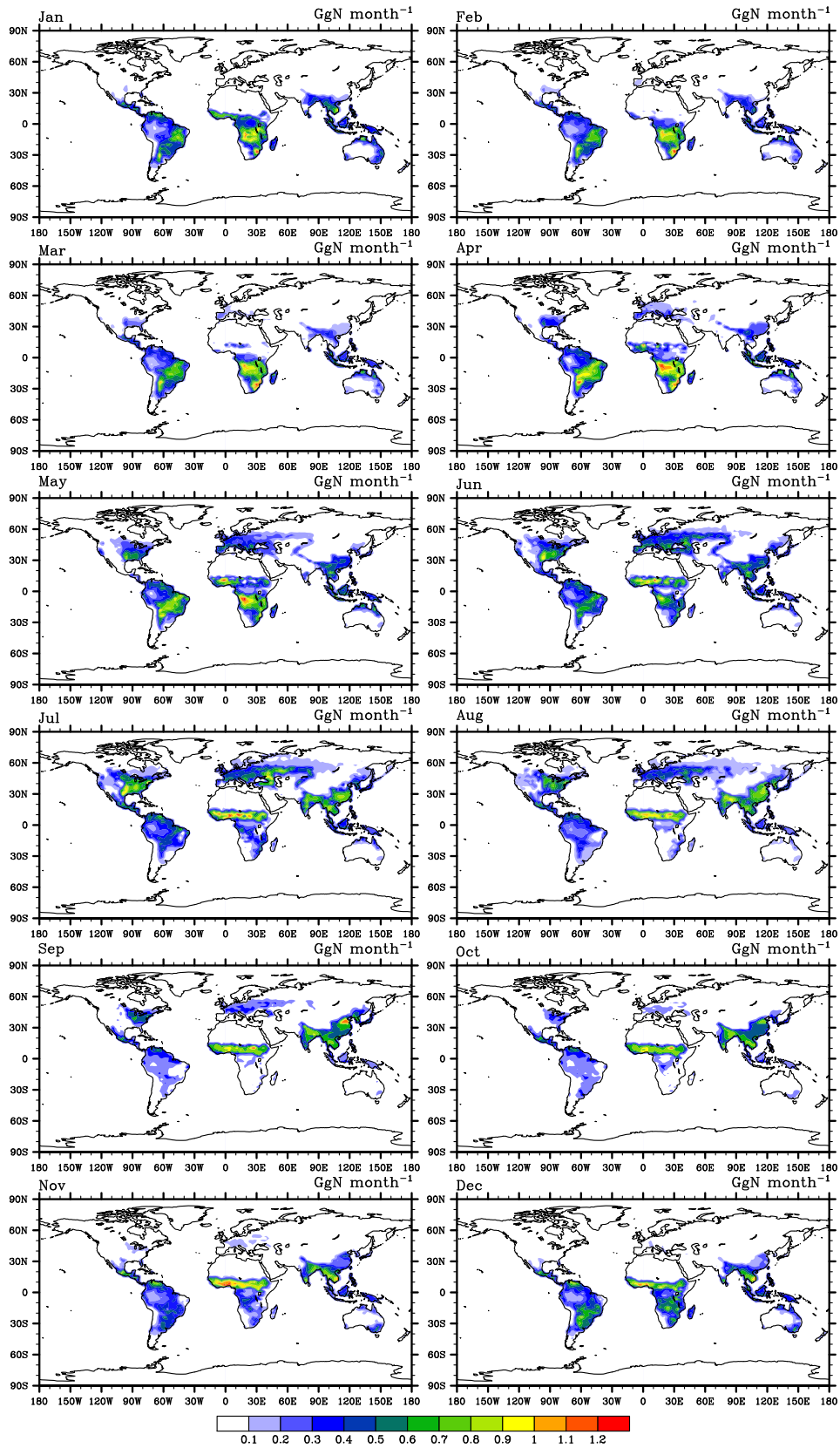


Figure 7. Global soil N_2O emissions flux estimated by the CLMCN- N_2O model using NCC forcing dataset in GgN month^{-1} .

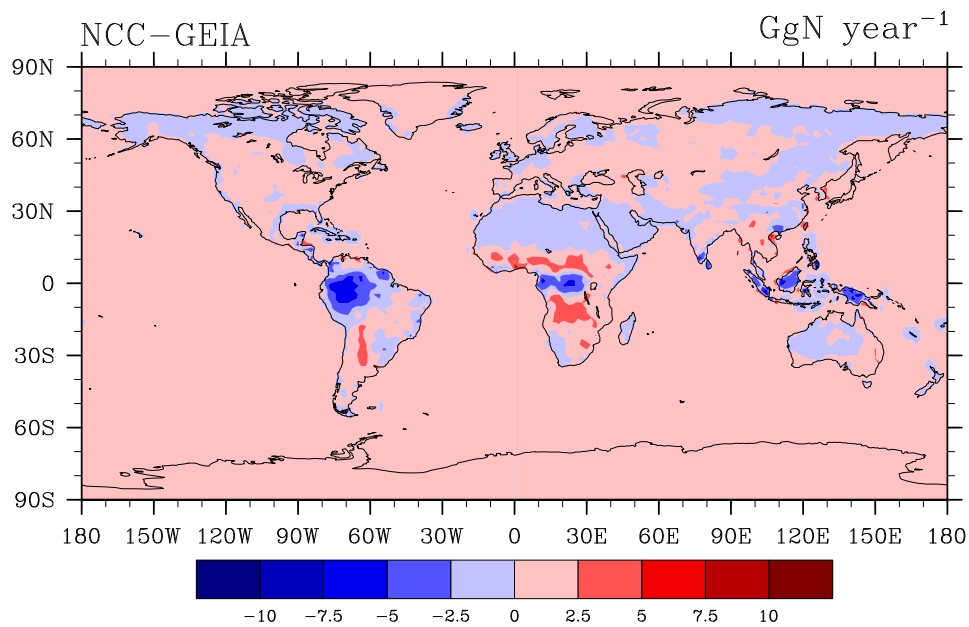


Figure 8. Difference between global soil N_2O emissions derived from CLMCN- N_2O compared to GEIA v1 in GgN month^{-1} .

Table 1. Regional soil N_2O emissions for year 2000 (TgN year^{-1}).

Region	NCC	CAS	GOLD
AFRICA	2.07 (25.2%)	1.99 (22.5%)	1.79 (23.8%)
ASIA	1.45 (17.7%)	1.54 (17.5%)	1.27 (16.9%)
CENTRAL AMERICA	0.05 (0.60%)	0.05 (0.60%)	0.05 (0.60%)
CENTRAL ASIA	1.46 (17.8%)	1.85 (20.9%)	1.46 (19.5%)
EUROPE	0.35 (4.30%)	0.39 (4.40%)	0.35 (4.60%)
MIDDLE EAST	0.08 (1.00%)	0.10 (1.10%)	0.08 (1.10%)
NORTH AMERICA	0.76 (9.30%)	0.86 (9.70%)	0.75 (10.0%)
OCEANIA	0.30 (3.50%)	0.33 (3.70%)	0.29 (3.80%)
SOUTH AMERICA	1.69 (20.6%)	1.73 (19.6%)	1.47 (19.6%)
TOTAL	8.21	8.83	7.50

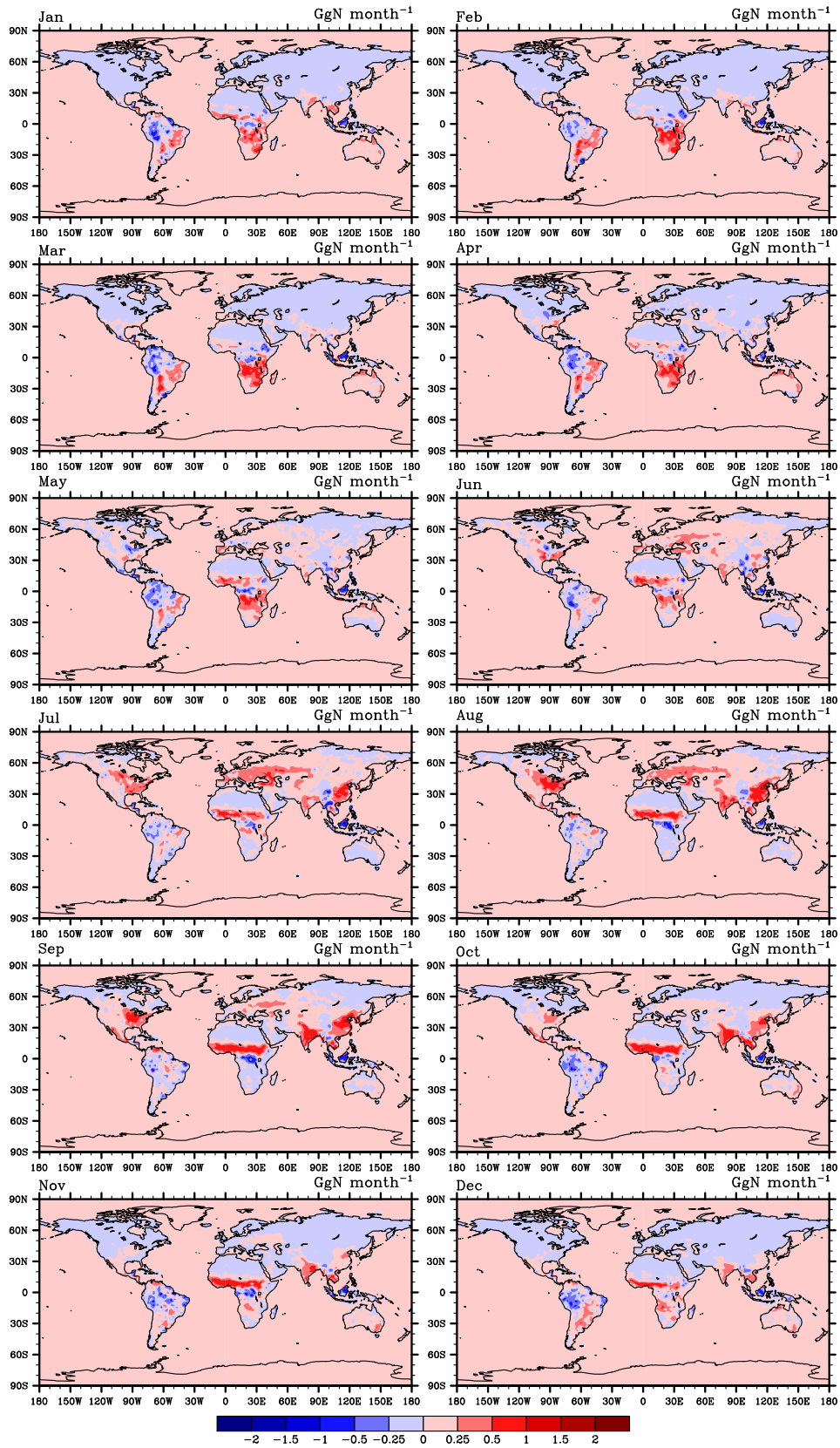


Figure 9. Difference between global soil N_2O emissions derived from CLMCN- N_2O compared to CASA in $GgN\ month^{-1}$.

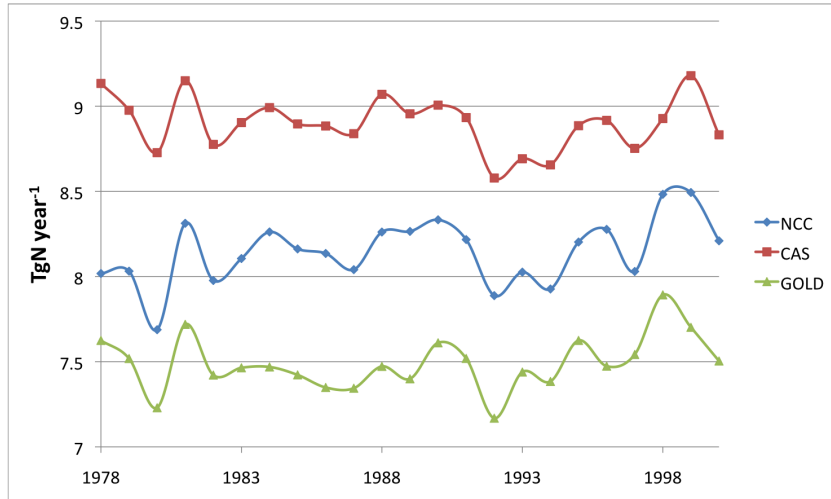


Figure 10. Inter-annual variability of global soil N₂O emissions derived from CLMCN-N₂O using 3 forcing datasets: NCEP Corrected by CRU (NCC), CAS, and Global Offline Land-Surface Dataset (GOLD).

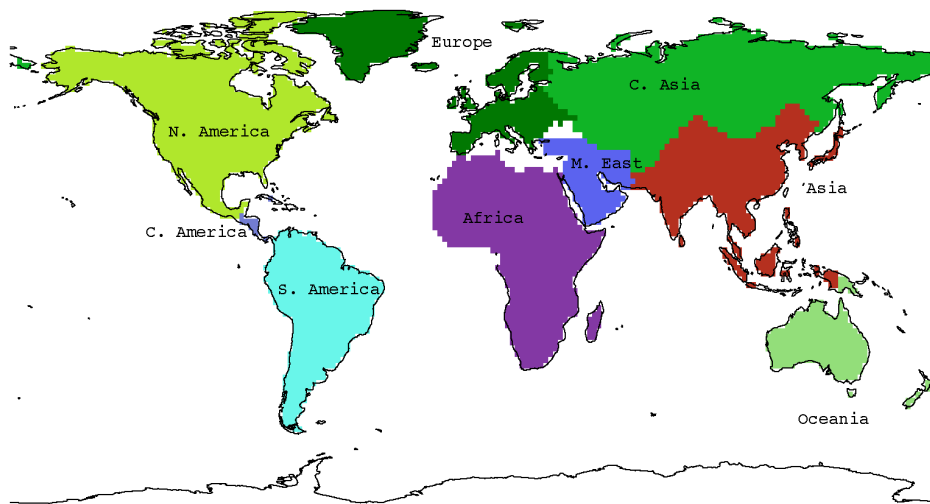


Figure 11. Regions for which CLMCN-N₂O emissions were analyzed.

existing bottom-up model estimates. Bouwman (1990) cites Seiler and Conrad (1987) that the estimated natural soil global budget of N₂O is 6 ± 3 Tg N₂O-N year⁻¹. Bouwman *et al.* (1995) estimates global natural soil N₂O emissions flux in 1990 to be 6.6-7.0 Tg N₂O-N year⁻¹, and Potter *et al.* (1996) estimates it to be 6.1 Tg N₂O-N year⁻¹. There are other estimates made in 1980s and 1990s including 7-16 Tg (Bowden, 1986), 3-25 Tg (Banin, 1986), and 6.7 Tg (Kreileman and Bouwman, 1994). Schlosser *et al.* (2007) estimates natural soil emissions from the Global Land System (GLS) to be 6.1 Tg N₂O-N year⁻¹. Conducting a top-down inversion study and assuming that oceanic flux has not changed, Hirsch *et al.* (2006) estimates the preindustrial terrestrial source to be 3.9-6.5 TgN year⁻¹. While our estimates lie within the range of the earlier studies' estimates, they are slightly higher than what the recent studies found.

Between 1978 and 2000, the lowest global soil N₂O emissions flux was in 1980 with 7.17-8.58 Tg N₂O-N year⁻¹, whereas the largest emissions was observed in 1999 with 7.89-9.18 Tg N₂O-N year⁻¹. Our model results show a large negative anomaly in soil N₂O emissions in 1980. **Figure 12** illustrates that regions such as North America, Oceania, and Africa have statistically significantly lower emissions than their 23-year mean values. We find that a heat wave and natural drought in 1980 led to high temperature and low VWC, which resulted in large N₂O emissions reduction in these regions in our model.

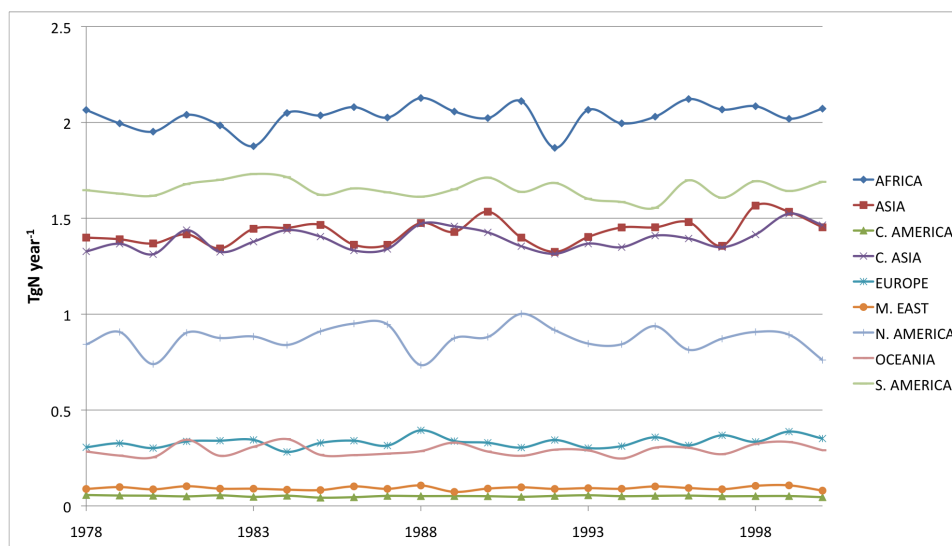


Figure 12. Regional total soil N₂O emissions between 1978 and 2000.

Figures 13 - 16 show the soil temperature, precipitation, VWC and soil N₂O emissions anomalies between 1980 and the climatological mean (1978-2000). The results indicate a strong linkage between VWC and the soil N₂O emissions in the model. We are able to find high correlations between these meteorological variables within the U.S., Australia and Southern Africa where there were large anomalies due to drought and a heat wave in 1980.

What is interesting is that our model results for 1992 are the second lowest of all the estimated emissions over the 28 years. This result matches well with the study that finds the growth rate of N₂O in 1992 to be half that in the previous decade (Smith, 1997), despite the continued growth

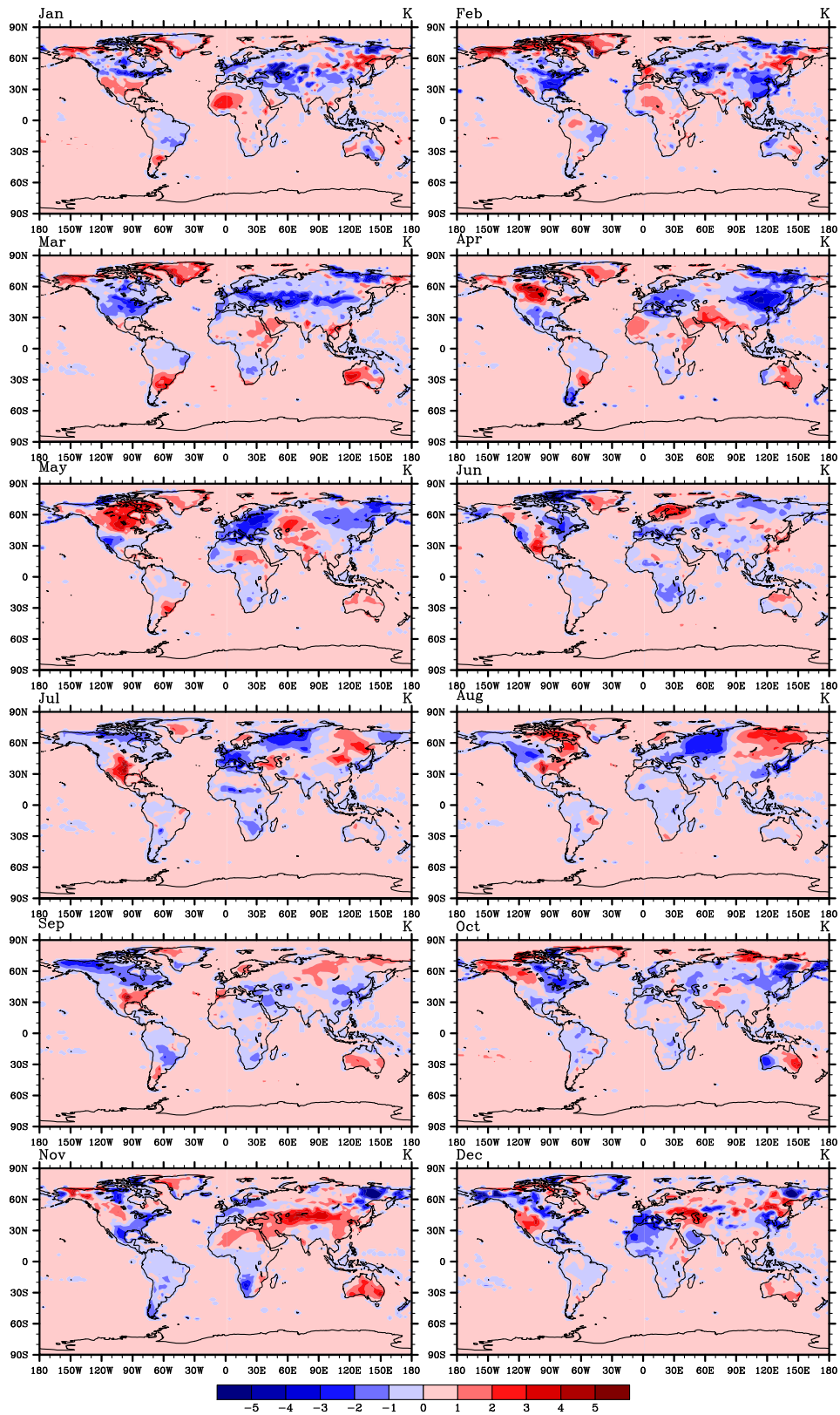


Figure 13. Soil temperature anomalies between 1980 and climatological mean over 1978-2000 in K.

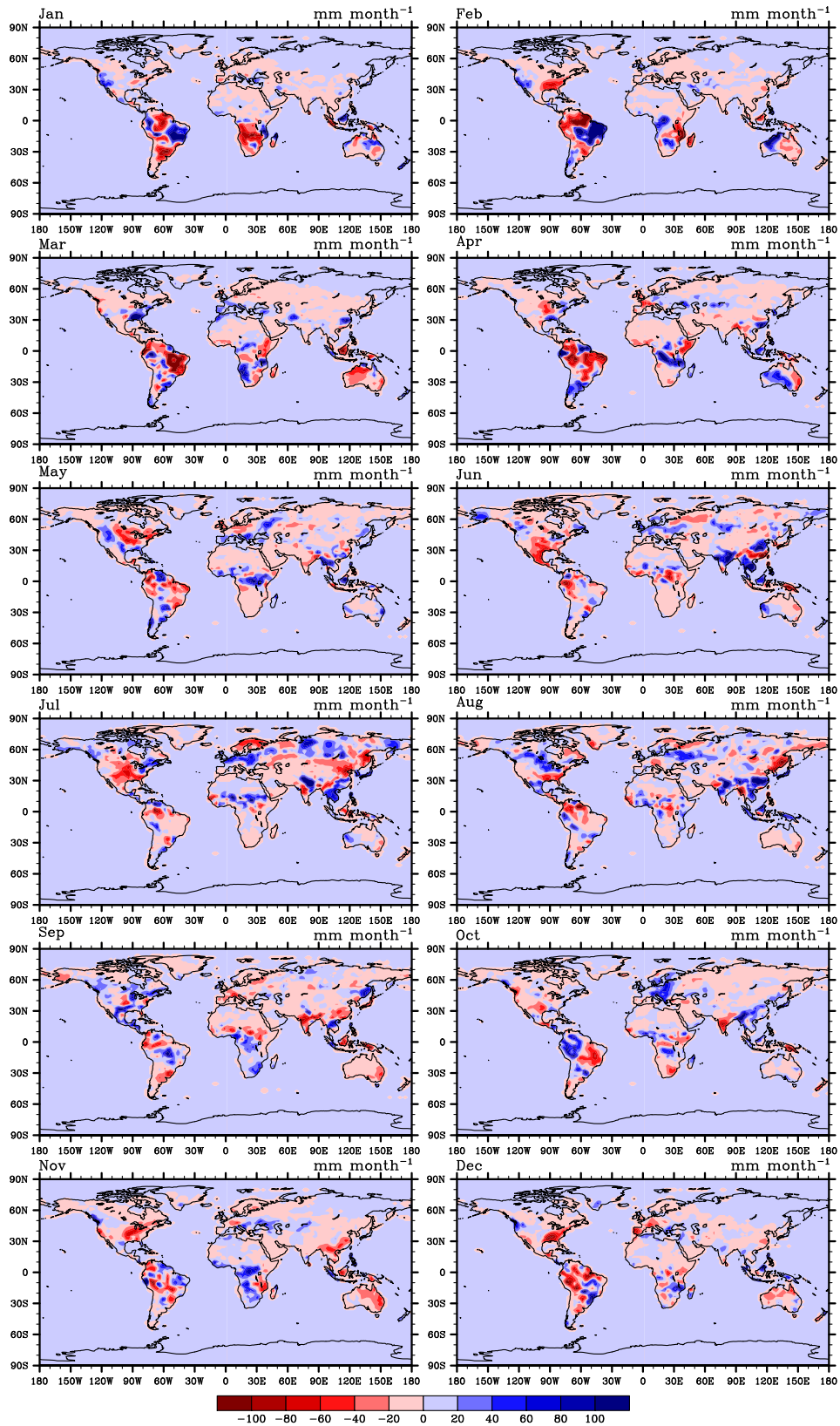


Figure 14. Precipitation anomalies between 1980 and climatological mean over 1978-2000 in mm month^{-1} .

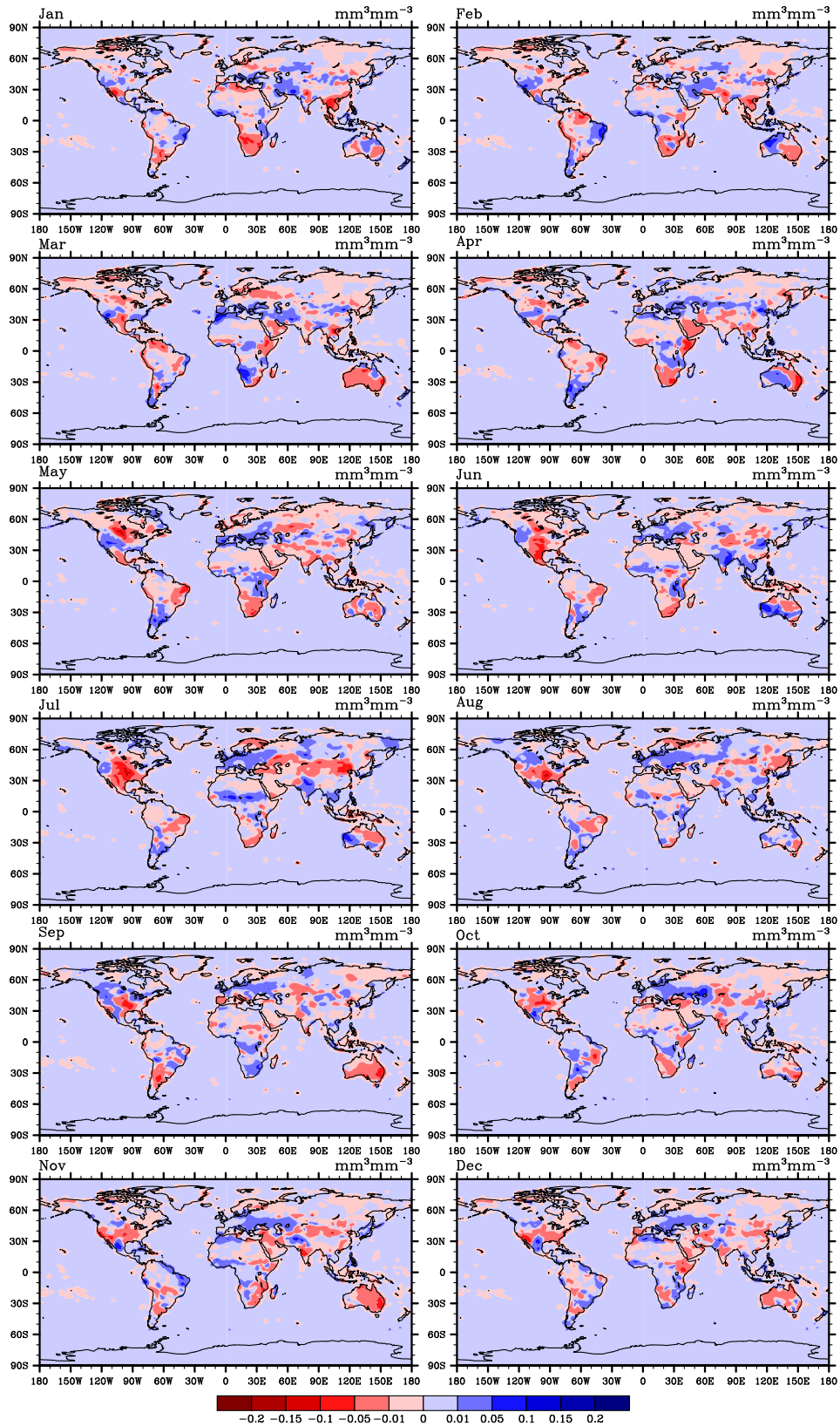


Figure 15. Volumetric Water Content anomalies between 1980 and climatological mean over 1978-2000 in $\text{mm}^3 \text{mm}^{-3}$.

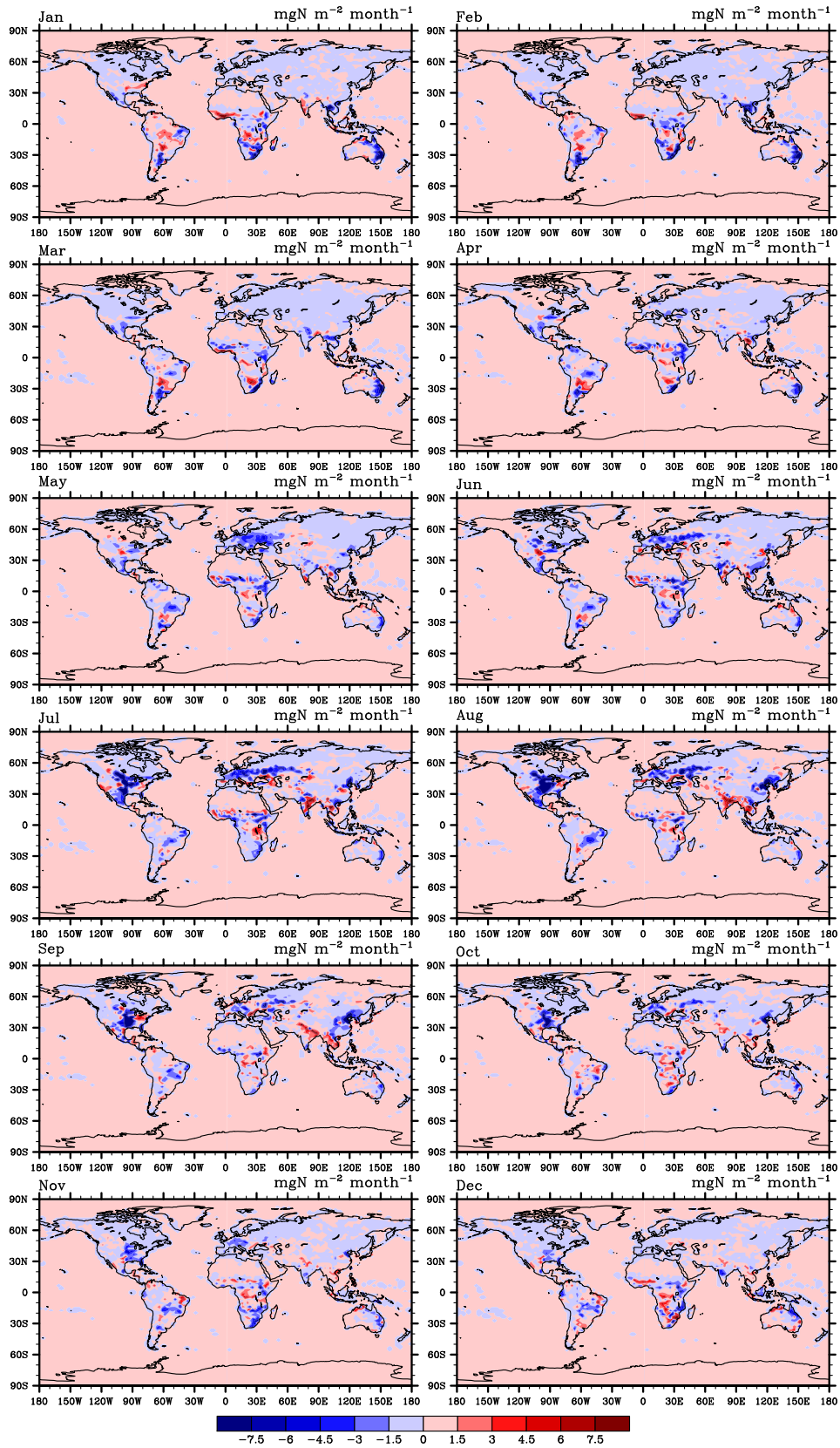


Figure 16. Soil emissions flux anomalies between 1980 and climatological mean over 1978-2000 in $\text{mgN m}^{-2} \text{ month}^{-1}$.

before and after 1992. Bouwman *et al.* (1995) suggested that this was possibly due to the observed global cooling associated with the eruption of Mount Pinatubo in 1991, which caused lower N₂O emissions in soils.

Figure 12 illustrates that low emissions were estimated in 1992 within Asia, Central Asia and Africa, close to the source of aerosol emissions in Mount Pinatubo (located in the Philippines, 15°N and 121°E). However, we find that lower emissions may be more likely due to the El Niño event that took place in 1992. For example, the response of lower emissions close to the volcano eruption is not visible in 1983 after the El Chichón eruption in Mexico in 1982. Emissions from Central America in 1982 and 1983 are, on the contrary, estimated to have increased. Furthermore, our model results illustrate a significant impact of other El Niño years on soil emissions as well, and the impact differs by regions, as shown in Figure 12. Compared to 1981, we find lower emissions in Africa in 1982, 1987, and 1992; and Oceania, Middle East, Asia, and Central Asia in all El Niño years. To quantify the impact of El Niño on soil N₂O emissions, we use 1981 as the ENSO neutral year based on the ENSO index that is closest to zero among the years we analyze.

Figure 17 illustrates that during these El Niño years, there are large negative emissions anomalies around 30°S in a part of Australia, Southern Africa and Southern America. There are negative emissions anomalies in these regions throughout the year, but the largest negative anomaly of more than -20 mgN m⁻² month⁻¹ is evident between February and April. Soil temperature, precipitation and VWC are important parameters for determining soil N₂O emissions in the CLMCN-N₂O model. However, when we analyze the anomaly of these variables between strong El Niño years and a neutral year, we do not see corresponding negative anomalies in any of the meteorological variables within these regions in March or April (**Figure 18**). We therefore focus our analysis on these two months to better understand what is driving this negative anomaly in our model.

We find that the negative anomalies in soil N₂O emissions around 30°S in March and April during El Niño years are not due to anomalies in soil temperature, precipitation, or VWC. Rather, it is due to negative anomalies in the net N mineralization rate and consequently the soil NH₄⁺ concentrations (Figure 18). These negative anomalies are the result of the reduction in gross primary product (GPP), which creates a decrease in available C. The negative anomaly in available C leads to reduced plant N demand, which then creates the reduction in plant C and N allocation. The cascade of these events produce a decrease in total soil organic C. Within CLM-CN, the net N mineralization rate is calculated based on the movement between a more active soil layer to the other, as well as that between litter C (inorganic) to soil C (organic). By reducing the former and increasing the latter, the net N mineralization rate is reduced. The reduced net N mineralization rate leads to a decrease in soil NH₄⁺ concentrations and thus as a result, we find a strong negative anomaly in soil N₂O emissions. We indeed find negative anomalies in all the variables where we see large reduction in soil N₂O emissions around 30°S, as illustrated in Figure 18.

Ciais *et al.* (2005) finds that European heatwave and drought in 2003 caused a reduction in GPP, due to stomatal closure. This supports our aforementioned analyses that we find a reduction

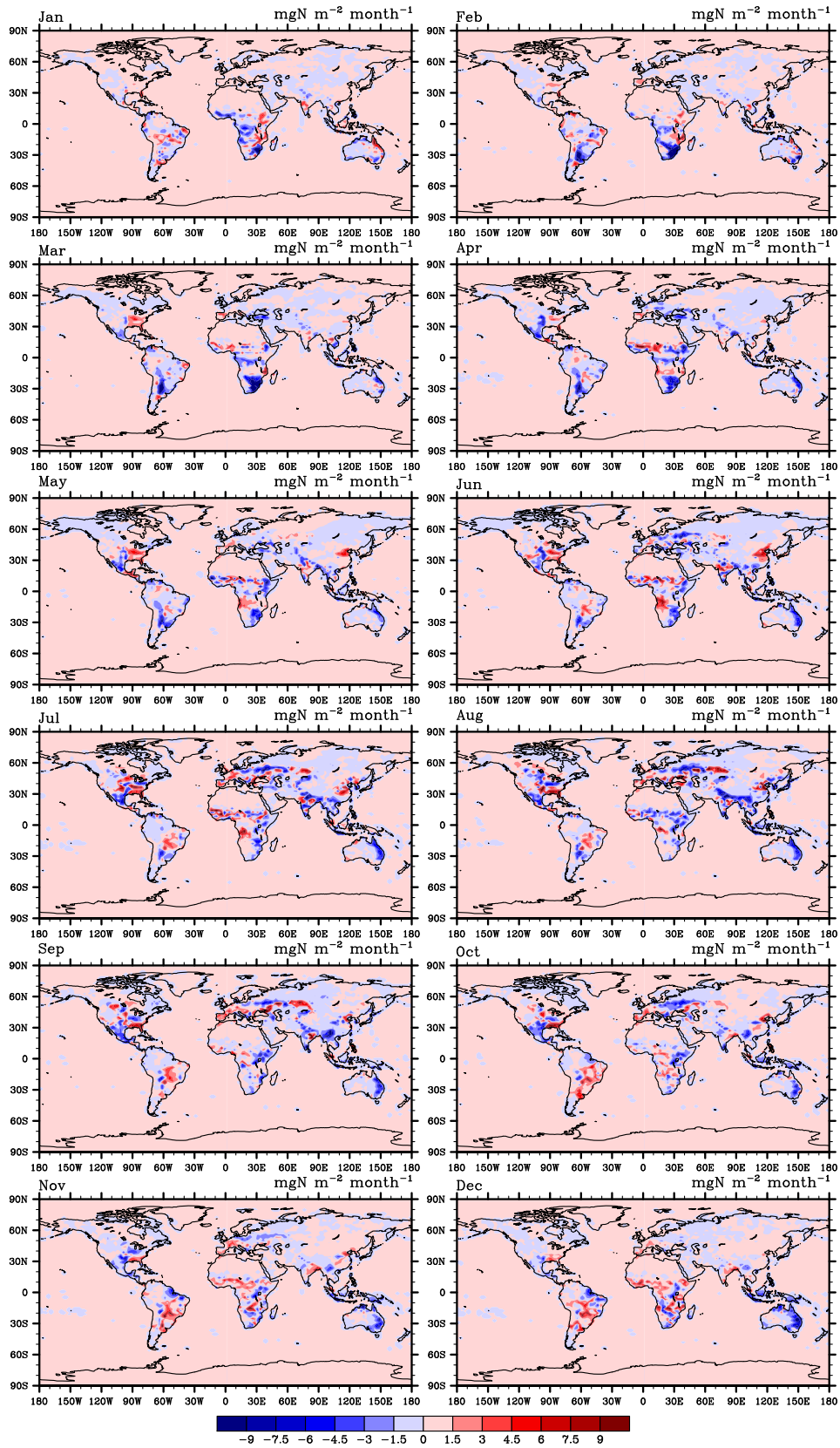


Figure 17. Average of the soil emissions flux anomalies between the strong El Niño years (1982, 1987, 1992 and 1997) and the El Niño neutral year in $\text{mgN m}^{-2} \text{ month}^{-1}$.

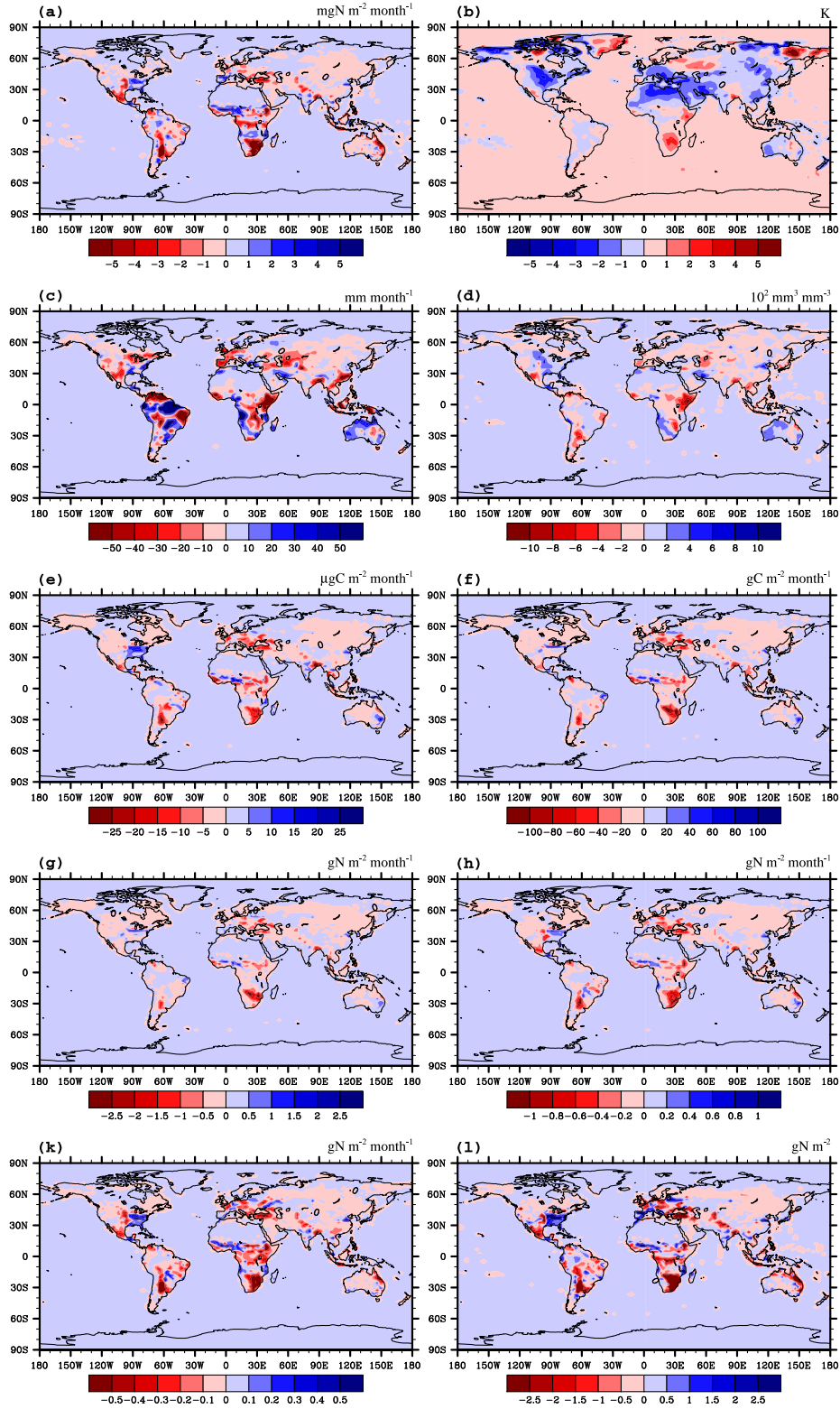


Figure 18. Anomalies of different variables between the average of March and April of El Niño years (1982, 1987, 1992 and 1997) and the El Niño neutral year. (a) Soil N_2O emissions ($\text{mgN m}^{-2} \text{ month}^{-1}$), (b) Soil temperature (K), (c) precipitation (mm month^{-1}), (d) VWC ($10^2 \text{ mm}^3 \text{ mm}^{-3}$), (e) gross primary production ($\mu\text{gC m}^{-2} \text{ month}^{-1}$), (f) available C ($\text{gC m}^{-2} \text{ month}^{-1}$), (g) plant N demand ($\text{gN m}^{-2} \text{ month}^{-1}$), (h) plant N allocation ($\text{gN m}^{-2} \text{ month}^{-1}$), (k) net N mineralization rate ($\text{gN m}^{-2} \text{ month}^{-1}$), and (l) soil NH_4^+ (gN m^{-2}).

in soil N₂O emissions in 1980 due to heatwave and drought. We furthermore find large negative GPP and net N mineralization rate anomalies in 1980 when compared to the climatological mean, as we did for El Niño years. Our model thus reconfirms that direct climate impact from drought and heat waves as well as the non-local influence due to El Niño may have more impacts on soil N₂O emissions than any response associated with a climate-altering volcanic event.

5. CONCLUDING REMARKS

In this study, we have linked the Community Land Model (CLM) with a process-based model of N₂O soil emissions. When comparing with available measurements, we find that the model reproduces the observations quite well at the two Amazon sites: the Tapajós National Forest and Fazenda Vitoriá, but not so well at the White Mountain National Forest in the U.S., probably due to the lack of winter activity in the upper latitudinal regions in the model. Our model results thus reconfirm that we need to understand the winter dynamics in the upper northern hemisphere regions in order to better model soil N₂O exchange. Further research needs to explore the possibility of including the winter soil biological processes to capture the increased soil N₂O emissions from soil freezing and thawing as well as the ability to capture N₂O uptake events that are observed.

An analysis of annual and seasonal variation of global soil N₂O emissions reveals some interesting insights. We find significant inter-annual variations in global natural soil N₂O emissions in our model simulation. There is known inter-annual variability in atmospheric mole fractions of N₂O (Nevison *et al.*, 2007), and our results suggest that natural soil emissions could play an important role. For example, the past measurements find that the growth rate of atmospheric N₂O in 1992 was half the amount of the previous decade (Smith, 1997). In our model results, we find reduced global emissions in 1992 regardless of the forcing datasets we use to run the model. The main reductions of soil N₂O emissions take place in Asia, Central Asia, and Africa, as shown in Figure 12. We find strong evidence that this is due to the El Niño Southern Oscillation. We also observe the impact of other El Niño years on soil emissions, and we find a large reduction in GPP around 30°S, leading to a negative anomaly in soil N₂O emissions in the region during February through April. Similarly, heat waves and droughts caused by high temperature and less precipitation have a similar effect on natural soil N₂O emissions.

We find a clear relationship between the climate and soil N₂O emissions in our model. It is thus possible that climate change will have a large impact on global soil N₂O emissions and vice versa. More study is necessary to understand this feedback mechanism as well as to improve the model to predict the soil N₂O emissions better in a different environment.

Acknowledgements

This research was supported by NASA Upper Atmosphere Research Program grants NNX11AF17G and NNX07AE89G to MIT and the federal and industrial sponsors of the MIT Joint Program on the Science and Policy of Global Change. We thank Eric Davidson (The Woods Hall Research Center) for providing his observations data.

6. REFERENCES

- Banin, A., 1986: Global budget of N₂O: The role of soils and their change. *The Science of the Total Environment*, **55**: 27 – 38. doi:[10.1016/0048-9697\(86\)90166-X](https://doi.org/10.1016/0048-9697(86)90166-X).
- Bouwman, A. F. (ed.), 1990: *Soils and the Greenhouse Effect*. Wiley and Sons: Chichester, 575 p.
- Bouwman, A. F., I. Fung, E. Matthews and J. John, 1993: Global analysis of the potential for N₂O production in natural soils. *Global Biogeochemical Cycles*, **7**(3): 557–597. doi:[10.1029/93GB01186](https://doi.org/10.1029/93GB01186).
- Bouwman, A. F., K. W. V. der Hoek and J. G. J. Olivier, 1995: Uncertainties in the global source distribution of nitrous oxide. *Journal of Geophysical Research*, **100**(D2). doi:[10.1029/94JD02946](https://doi.org/10.1029/94JD02946).
- Bowden, W. B., 1986: Gaseous nitrogen emissions from undisturbed terrestrial ecosystems: An assessment of their impacts on local and global nitrogen budgets. *Biogeochemistry*, **2**(3): 249–279. doi:[10.1007/BF02180161](https://doi.org/10.1007/BF02180161).
- Bremner, J. M. and A. M. Blackmer, 1981: Terrestrial Nitrification as a Source of Atmospheric Nitrous Oxide. In: *Denitrification, Nitrification and Nitrous Oxide*, C. C. Delwiche, (ed.), John Wiley: New York, NY, pp. 151–170.
- Ciais, P., M. Reichstein, N. Viovy, A. Granier, J. Ogee, V. Allard, M. Aubinet, N. Buchmann, C. Bernhofer, A. Carrara, F. Chevallier, N. De Noblet, A. D. Friend, P. Friedlingstein, T. Grunwald, B. Heinesch, P. Keronen, A. Knohl, G. Krinner, D. Loustau, G. Manca, G. Matteucci, F. Miglietta, J. M. Ourcival, D. Papale, K. Pilegaard, S. Rambal, G. Seufert, J. F. Soussana, M. J. Sanz, E. D. Schulze, T. Vesala and R. Valentini, 2005: Europe-wide reduction in primary productivity caused by the heat and drought in 2003. *Nature*, **437**(7058): 529–533.
- Collins, W. D., C. M. Bitz, M. L. Blackmon, G. B. Bonan, C. S. Bretherton, J. A. Carton, P. Chang, S. C. Doney, J. J. Hack, T. B. Henderson, J. T. Kiehl, W. G. Large, D. S. McKenna, B. D. Santer and R. D. Smith, 2006: The Community Climate System Model Version 3 (CCSM3). *Journal of Climate*, **19**: 2122–2143.
- Davidson, E. A., 1991: Fluxes of nitrous oxide and nitric oxide from terrestrial ecosystems. In: *Microbial Production and Consumption of Greenhouse Gases: Methane, Nitrogen Oxides and Halomethanes*, J. E. Rogers and W. B. Whitman, (eds.), American Society for Microbiology: Washington, pp. 219–236.
- Davidson, E. A., 2009: The contribution of manure and fertilizer nitrogen to atmospheric nitrous oxide since 1860. *Nature Geosci*, **2**(9): 659–662. doi:[10.1038/ngeo608](https://doi.org/10.1038/ngeo608).
- Davidson, E. A., F. Y. Ishida and D. C. Nepstad, 2004: Effects of an experimental drought on soil emissions of carbon dioxide, methane, nitrous oxide, and nitric oxide in a moist tropical forest. *Global Change Biology*, **10**: 718–730. doi:[10.1111/j.1529-8817.200300762.x](https://doi.org/10.1111/j.1529-8817.200300762.x).
- Davidson, E. A., D. C. Nepstad, F. Y. Ishida and P. M. Brando, 2008: Effects of an experimental drought and recovery on soil emissions of carbon dioxide, methane, nitrous oxide, and nitric oxide in a moist tropical forest. *Global Change Biology*, **14**(11): 2582–2590. doi:[10.1111/j.1365-2486.2008.01694.x](https://doi.org/10.1111/j.1365-2486.2008.01694.x).
- Dirmeyer, P. A. and L. Tan, 2001: A multi-decadal global land-surface data set of state variables and fluxes. Center for Ocean-Land-Atmosphere Studies *COLA Technical Report*, August.

- Dirmeyer, P. A., X. Gao, M. Zhao, Z. Guo, T. Oki and N. Hanasaki, 2006: GSWP-2: Multimodel Analysis and Implications for Our Perception of the Land Surface. *Bulletin of the American Meteorological Society*, **87**(10): 1381–1397. doi:[10.1175/BAMS-87-10-1381](https://doi.org/10.1175/BAMS-87-10-1381).
- Firestone, M. K. and E. A. Davidson, 1989: Microbiological basis of NO and N₂O production and consumption in soil. In: *Exchange of Trace Gases Between Terrestrial Ecosystems and the Atmosphere*, M. O. Andreae and D. S. Schimel, (eds.), John Wiley and Sons: New York, NY, pp. 7–21.
- Forster, P., V. Ramaswamy, P. Artaxo, T. Berntsen, R. Betts, D. W. Fahey, J. Haywood, J. Lean, D. C. Lowe, G. Myhre, J. Nganga, R. Prinn, G. Raga, M. Schulz and R. van Dorland, 2007: Changes in Atmospheric Constituents and in Radiative Forcing. In: *Climate Change 2007: The Physical Science Basis. Contribution of Working Group I to the 4th Assessment Report of the Intergovernmental Panel on Climate Change*, S. Solomon, D. Qin, M. Manning, Z. Chen, M. Marquis, K. B. Averyt, M. Tignor and H. L. Miller, (eds.), Cambridge University Press: United Kingdom and New York, NY, Chapter 2.
- Goreau, T. J., W. A. Kaplan, S. C. Wofsy, M. B. McElroy, F. W. Valois and S. W. Watson, 1980: Production of NO₂- and N₂O by Nitrifying Bacteria at Reduced Concentrations of Oxygen. *Appl. Environ. Microbiol.*, **40**: 526–532.
- Groffman, P. M., J. P. Hardy, C. T. Driscoll and T. J. Fahey, 2006: Snow depth, soil freezing, and fluxes of carbon dioxide, nitrous oxide and methane in a northern hardwood forest. *Global Change Biology*, **12**(9): 1748–1760. doi:[10.1111/j.1365-2486.2006.01194.x](https://doi.org/10.1111/j.1365-2486.2006.01194.x).
- Hirsch, A. I., A. M. Michalak, L. M. Bruhwiler, W. Peters, E. J. Dlugokencky and P. P. Tans, 2006: Inverse modeling estimates of the global nitrous oxide surface flux from 1998-2001. *Global Biogeochemical Cycles*, **20**(GB1008). doi:[10.1029/2004GB002443](https://doi.org/10.1029/2004GB002443).
- Huang, J., A. Golombek, R. Prinn, R. Weiss, P. Fraser, P. Simmonds, E. J. Dlugokencky, B. Hall, J. Elkins, P. Steele, R. Langenfelds, P. Krummel, G. Dutton and L. Porter, 2008: Estimation of regional emissions of nitrous oxide from 1997 to 2005 using multinet network measurements, a chemical transport model, and an inverse method. *Journal of Geophysical Research*, **113**(D17313). doi:[10.1029/2007JD009381](https://doi.org/10.1029/2007JD009381).
- Khalil, M. A. K., R. A. Rasmussen and M. J. Shearer, 2002: Atmospheric nitrous oxide: patterns of global change during recent decades and centuries. *Chemosphere*, **47**(8): 807 – 821. doi:[10.1016/S0045-6535\(01\)00297-1](https://doi.org/10.1016/S0045-6535(01)00297-1).
- Kielland, K., K. Olson, R. W. Ruess and R. D. Boone, 2006: Contribution of winter processes to soil nitrogen flux in taiga forest ecosystems. *Biogeochemistry*, **81**(3): 349–360.
- Kreileman, G. J. J. and A. F. Bouwman, 1994: Computing land use emissions of greenhouse gases. *Water, Air, and Soil Pollution*, **76**: 231–258. doi:[10.1007/BF00478341](https://doi.org/10.1007/BF00478341).
- Lawrence, D., K. Oleson, M. Flanner, P. Thornton, S. Swenson, P. Lawrence, X. Zeng, Z.-L. Yang, S. Levis, K. Skaguchi, G. Bonan and A. Slater, 2011: Parameterization Improvements and Functional and Structural Advances in Version 4 of the Community Land Mode. *Journal of Advances in Modeling Earth Systems*, **3**(1). doi:[10.1029/2011MS000045](https://doi.org/10.1029/2011MS000045).
- Li, C., S. Frolking and T. A. Frolking, 1992: A Model of Nitrous Oxide Evolution From Soil Driven by Rainfall Events: 1. Model Structure and Sensitivity. *Journal of Geophysical Research*, **97**(D9): 9759–9776.

- Lin, B.-L., A. Sakoda, R. Shibasaki, N. Goto and M. Suzuki, 2000: Modelling a global biogeochemical nitrogen cycle in terrestrial ecosystems. *Ecological Modelling*, **135**(1): 89 – 110. doi:[10.1016/S0304-3800\(00\)00372-0](https://doi.org/10.1016/S0304-3800(00)00372-0).
- McGuire, A. D., J. M. Melillo, L. A. Joyce, D. W. Kicklighter, A. L. Grace, B. Moore and C. J. Vorosmarty, 1992: Interactions between carbon and nitrogen dynamics in estimating net primary productivity for potential vegetation in North America. *Global Biogeochemical Cycles*, **6**(2): 101–124.
- Mosier, A., C. Kroeze, C. Nevison, O. Oenema, S. Seitzinger and O. van Cleemput, 1998: Closing the global N₂O budget: nitrous oxide emissions through the agricultural nitrogen cycle. *Nutrient Cycling in Agroecosystems*, **52**: 225–248. doi:[10.1023/A:1009740530221](https://doi.org/10.1023/A:1009740530221).
- Nevison, C. D., G. Esser and E. A. Holland, 1996: A global model of changing N₂O emissions from natural and perturbed soils. *Climatic Change*, **32**(3): 327–378. doi:[10.1007/BF00142468](https://doi.org/10.1007/BF00142468).
- Nevison, C. D., N. M. Mahowald, R. F. Weiss and R. G. Prinn, 2007: Interannual and seasonal variability in atmospheric N₂O. *Global Biogeochemical Cycles*, **21**(GB3017). doi:[10.1029/2006GB002755](https://doi.org/10.1029/2006GB002755).
- Ngo-Duc, T., J. Polcher and K. Laval, 2005: A 53-year forcing data set for land surface models. *Journal of Geophysical Research*, **110**(D06116). doi:[10.1029/2004JD005434](https://doi.org/10.1029/2004JD005434).
- Oleson, K. W., G.-Y. Niu, Z.-L. Yang, D. M. Lawrence, P. E. Thornton, P. J. Lawrence, R. Stockli, R. E. Dickinson, G. B. Bonan, S. Levis, A. Dai and T. Qian, 2008: Improvements to the Community Land Model and their impact on the hydrological cycle. *Journal of Geophysical Research*, **113**(G01021). doi:[10.1029/2007JG000563](https://doi.org/10.1029/2007JG000563).
- Poth, M. and D. D. Focht, 1985: 15 N Kinetic Analysis of N₂O Production by *Nitrosomonas europaea*: An Examination of Nitrifier Denitrification. *Applied Environmental Microbiology*, **49**: 1134–1141.
- Potter, C. S., P. A. Matson, P. M. Vitousek and E. A. Davidson, 1996: Process modeling of controls on nitrogen trace gas emissions from soils worldwide. *Journal of Geophysical Research*, **101**(D1): 1361–1377.
- Prinn, R. G., D. Cunnold, R. Rasmussen, P. Simmonds, F. Alyea, A. Crawford, P. Fraser and R. Rosen, 1990: Atmospheric Emissions and Trends of Nitrous Oxide Deduced From 10 Years of ALE-GAGE Data. *Journal of Geophysical Research*, **95**(D11): 18369–18385.
- Qian, T., A. Dai, K. E. Trenberth and K. W. Oleson, 2006: Simulation of Global Land Surface Conditions from 1948 to 2004. Part I: Forcing Data and Evaluations. *Journal of Hydrometeorology*, **7**(5): 953–975. doi:[10.1175/JHM540.1](https://doi.org/10.1175/JHM540.1).
- Randerson, J. T., F. M. Hoffman, P. E. Thornton, N. M. Mahowald, K. Lindsay, Y. H. Lee, C. D. Nevison, S. C. Doney, G. Bonan, R. Stockli, C. Covey, S. W. Running and I. Y. Fung, 2009: Systematic Assessment of Terrestrial Biogeochemistry in Coupled Climate-Carbon Models. *Global Change Biology*, **15**: 2462–2484.
- Ravishankara, A. R., J. S. Daniel and R. W. Portmann, 2009: Nitrous Oxide (NO): The Dominant Ozone-Depleting Substance Emitted in the 21st Century. *Science*, **326**(5949): pp. 123–125.

- Schlosser, C. A., D. Kicklighter and A. Sokolov, 2007: A Global Land System Framework for Integrated Climate-Change Assessments. MIT Joint Program on the Science and Policy of Global Change *MIT Joint Program Report 147*, May.
(http://web.mit.edu/globalchange/www/MITJPSPGC_Rpt147.pdf).
- Seiler, W. and R. Conrad, 1987: Contribution of tropical ecosystems to the global budgets of trace gases, especially CH₄, H₂, CO and N₂O. In: *Geophysiology of Amazonia. Vegetation and Climate Interactions*, R. E. Dickinson, (ed.), Wiley and Sons: New York, NY, pp. 133–160.
- Smith, K., 1997: The potential for feedback effects induced by global warming on emissions of nitrous oxide by soils. *Global Change Biology*, **3**(4): 327–338.
doi:[10.1046/j.1365-2486.1997.00100.x](https://doi.org/10.1046/j.1365-2486.1997.00100.x).
- Stöckli, R., D. M. Lawrence, G.-Y. Niu, K. W. Oleson, P. E. Thornton, Z.-L. Yang, G. B. Bonan, A. S. Denning and S. W. Running, 2008: Use of FLUXNET in the Community Land Model development. *Journal of Geophysical Research*, **113**(G01025). doi:[10.1029/2007JG000562](https://doi.org/10.1029/2007JG000562).
- Thornton, P. E. and N. A. Rosenbloom, 2005: Ecosystem model spin-up: Estimating steady state conditions in a coupled terrestrial carbon and nitrogen cycle model. *Ecological Modelling*, **189**(1-2): 25 – 48. doi:[10.1016/j.ecolmodel.2005.04.008](https://doi.org/10.1016/j.ecolmodel.2005.04.008).
- Thornton, P. E., B. E. Law, H. L. Gholz, K. L. Clark, E. Falge, D. S. Ellsworth, A. H. Goldstein, R. K. Monson, D. Hollinger, M. Falk, J. Chen and J. P. Sparks, 2002: Modeling and measuring the effects of disturbance history and climate on carbon and water budgets in evergreen needleleaf forests. *Agricultural and Forest Meteorology*, **113**(1-4): 185–222.
- Thornton, P. E., J. F. Lamarque, N. A. Rosenbloom and N. M. Mahowald, 2007: Influence of carbon-nitrogen cycle coupling on land model response to CO₂ fertilization and climate variability. *Global Biogeochemical Cycles*, **21**: GB4018. doi:[10.1029/2006GB002868](https://doi.org/10.1029/2006GB002868).
- Thornton, P. E., S. C. Doney, K. Lindsay, J. K. Moore, N. Mahowald, J. T. Randerson, I. Fung, J.-F. Lamarque, J. J. Feddema and Y.-H. Lee, 2009: Carbon-nitrogen interactions regulate climate-carbon cycle feedbacks: results from an atmosphere-ocean general circulation model. *Biogeosciences*, **6**: 2099–2120.
- Verchot, L. V., E. A. Davidson, H. Cattanio, I. L. Ackerman, H. E. Erickson and M. Keller, 1999: Land use change and biogeochemical controls of nitrogen oxide emissions from soils in eastern Amazonia. *Global Biogeochemical Cycles*, **13**(1): 31–46.
doi:[10.1029/1998GB900019](https://doi.org/10.1029/1998GB900019).
- Weiss, R. F., 1981: The Temporal and Spatial Distribution of Tropospheric Nitrous Oxide. *Journal of Geophysical Research*, **86**(C8): 7185–7195.

REPORT SERIES of the MIT Joint Program on the Science and Policy of Global Change

1. **Uncertainty in Climate Change Policy Analysis**
Jacoby & Prinn December 1994
2. **Description and Validation of the MIT Version of the GISS 2D Model** *Sokolov & Stone* June 1995
3. **Responses of Primary Production and Carbon Storage to Changes in Climate and Atmospheric CO₂ Concentration** *Xiao et al.* October 1995
4. **Application of the Probabilistic Collocation Method for an Uncertainty Analysis** *Webster et al.* January 1996
5. **World Energy Consumption and CO₂ Emissions: 1950-2050** *Schmalensee et al.* April 1996
6. **The MIT Emission Prediction and Policy Analysis (EPPA) Model** *Yang et al.* May 1996 (*superseded* by No. 125)
7. **Integrated Global System Model for Climate Policy Analysis** *Prinn et al.* June 1996 (*superseded* by No. 124)
8. **Relative Roles of Changes in CO₂ and Climate to Equilibrium Responses of Net Primary Production and Carbon Storage** *Xiao et al.* June 1996
9. **CO₂ Emissions Limits: Economic Adjustments and the Distribution of Burdens** *Jacoby et al.* July 1997
10. **Modeling the Emissions of N₂O and CH₄ from the Terrestrial Biosphere to the Atmosphere** *Liu* Aug. 1996
11. **Global Warming Projections: Sensitivity to Deep Ocean Mixing** *Sokolov & Stone* September 1996
12. **Net Primary Production of Ecosystems in China and its Equilibrium Responses to Climate Changes**
Xiao et al. November 1996
13. **Greenhouse Policy Architectures and Institutions**
Schmalensee November 1996
14. **What Does Stabilizing Greenhouse Gas Concentrations Mean?** *Jacoby et al.* November 1996
15. **Economic Assessment of CO₂ Capture and Disposal**
Eckaus et al. December 1996
16. **What Drives Deforestation in the Brazilian Amazon?**
Pfaff December 1996
17. **A Flexible Climate Model For Use In Integrated Assessments** *Sokolov & Stone* March 1997
18. **Transient Climate Change and Potential Croplands of the World in the 21st Century** *Xiao et al.* May 1997
19. **Joint Implementation: Lessons from Title IV's Voluntary Compliance Programs** *Atkeson* June 1997
20. **Parameterization of Urban Subgrid Scale Processes in Global Atm. Chemistry Models** *Calbo et al.* July 1997
21. **Needed: A Realistic Strategy for Global Warming**
Jacoby, Prinn & Schmalensee August 1997
22. **Same Science, Differing Policies; The Saga of Global Climate Change** *Skolnikoff* August 1997
23. **Uncertainty in the Oceanic Heat and Carbon Uptake and their Impact on Climate Projections**
Sokolov et al. September 1997
24. **A Global Interactive Chemistry and Climate Model**
Wang, Prinn & Sokolov September 1997
25. **Interactions Among Emissions, Atmospheric Chemistry & Climate Change** *Wang & Prinn* Sept. 1997
26. **Necessary Conditions for Stabilization Agreements**
Yang & Jacoby October 1997
27. **Annex I Differentiation Proposals: Implications for Welfare, Equity and Policy** *Reiner & Jacoby* Oct. 1997
28. **Transient Climate Change and Net Ecosystem Production of the Terrestrial Biosphere**
Xiao et al. November 1997
29. **Analysis of CO₂ Emissions from Fossil Fuel in Korea: 1961-1994** *Choi* November 1997
30. **Uncertainty in Future Carbon Emissions: A Preliminary Exploration** *Webster* November 1997
31. **Beyond Emissions Paths: Rethinking the Climate Impacts of Emissions Protocols** *Webster & Reiner* November 1997
32. **Kyoto's Unfinished Business** *Jacoby et al.* June 1998
33. **Economic Development and the Structure of the Demand for Commercial Energy** *Judson et al.* April 1998
34. **Combined Effects of Anthropogenic Emissions and Resultant Climatic Changes on Atmospheric OH** *Wang & Prinn* April 1998
35. **Impact of Emissions, Chemistry, and Climate on Atmospheric Carbon Monoxide** *Wang & Prinn* April 1998
36. **Integrated Global System Model for Climate Policy Assessment: Feedbacks and Sensitivity Studies**
Prinn et al. June 1998
37. **Quantifying the Uncertainty in Climate Predictions**
Webster & Sokolov July 1998
38. **Sequential Climate Decisions Under Uncertainty: An Integrated Framework** *Valverde et al.* September 1998
39. **Uncertainty in Atmospheric CO₂ (Ocean Carbon Cycle Model Analysis)** *Holian* Oct. 1998 (*superseded* by No. 80)
40. **Analysis of Post-Kyoto CO₂ Emissions Trading Using Marginal Abatement Curves** *Ellerman & Decaux* Oct. 1998
41. **The Effects on Developing Countries of the Kyoto Protocol and CO₂ Emissions Trading**
Ellerman et al. November 1998
42. **Obstacles to Global CO₂ Trading: A Familiar Problem**
Ellerman November 1998
43. **The Uses and Misuses of Technology Development as a Component of Climate Policy** *Jacoby* November 1998
44. **Primary Aluminum Production: Climate Policy, Emissions and Costs** *Harnisch et al.* December 1998
45. **Multi-Gas Assessment of the Kyoto Protocol**
Reilly et al. January 1999
46. **From Science to Policy: The Science-Related Politics of Climate Change Policy in the U.S.** *Skolnikoff* January 1999
47. **Constraining Uncertainties in Climate Models Using Climate Change Detection Techniques**
Forest et al. April 1999
48. **Adjusting to Policy Expectations in Climate Change Modeling** *Shackley et al.* May 1999
49. **Toward a Useful Architecture for Climate Change Negotiations** *Jacoby et al.* May 1999
50. **A Study of the Effects of Natural Fertility, Weather and Productive Inputs in Chinese Agriculture**
Eckaus & Tso July 1999
51. **Japanese Nuclear Power and the Kyoto Agreement**
Babiker, Reilly & Ellerman August 1999
52. **Interactive Chemistry and Climate Models in Global Change Studies** *Wang & Prinn* September 1999
53. **Developing Country Effects of Kyoto-Type Emissions Restrictions** *Babiker & Jacoby* October 1999

Contact the Joint Program Office to request a copy. The Report Series is distributed at no charge.

REPORT SERIES of the MIT Joint Program on the Science and Policy of Global Change

54. **Model Estimates of the Mass Balance of the Greenland and Antarctic Ice Sheets** *Bugnion* Oct 1999
55. **Changes in Sea-Level Associated with Modifications of Ice Sheets over 21st Century** *Bugnion* October 1999
56. **The Kyoto Protocol and Developing Countries** *Babiker et al.* October 1999
57. **Can EPA Regulate Greenhouse Gases Before the Senate Ratifies the Kyoto Protocol?** *Bugnion & Reiner* November 1999
58. **Multiple Gas Control Under the Kyoto Agreement** *Reilly, Mayer & Harnisch* March 2000
59. **Supplementarity: An Invitation for Monopsony?** *Ellerman & Sue Wing* April 2000
60. **A Coupled Atmosphere-Ocean Model of Intermediate Complexity** *Kamenkovich et al.* May 2000
61. **Effects of Differentiating Climate Policy by Sector: A U.S. Example** *Babiker et al.* May 2000
62. **Constraining Climate Model Properties Using Optimal Fingerprint Detection Methods** *Forest et al.* May 2000
63. **Linking Local Air Pollution to Global Chemistry and Climate** *Mayer et al.* June 2000
64. **The Effects of Changing Consumption Patterns on the Costs of Emission Restrictions** *Lahiri et al.* Aug 2000
65. **Rethinking the Kyoto Emissions Targets** *Babiker & Eckaus* August 2000
66. **Fair Trade and Harmonization of Climate Change Policies in Europe** *Viguier* September 2000
67. **The Curious Role of "Learning" in Climate Policy: Should We Wait for More Data?** *Webster* October 2000
68. **How to Think About Human Influence on Climate** *Forest, Stone & Jacoby* October 2000
69. **Tradable Permits for Greenhouse Gas Emissions: A primer with reference to Europe** *Ellerman* Nov 2000
70. **Carbon Emissions and The Kyoto Commitment in the European Union** *Viguier et al.* February 2001
71. **The MIT Emissions Prediction and Policy Analysis Model: Revisions, Sensitivities and Results** *Babiker et al.* February 2001 (*superseded* by No. 125)
72. **Cap and Trade Policies in the Presence of Monopoly and Distortionary Taxation** *Fullerton & Metcalf* March '01
73. **Uncertainty Analysis of Global Climate Change Projections** *Webster et al.* Mar. '01 (*superseded* by No. 95)
74. **The Welfare Costs of Hybrid Carbon Policies in the European Union** *Babiker et al.* June 2001
75. **Feedbacks Affecting the Response of the Thermohaline Circulation to Increasing CO₂** *Kamenkovich et al.* July 2001
76. **CO₂ Abatement by Multi-fueled Electric Utilities: An Analysis Based on Japanese Data** *Ellerman & Tsukada* July 2001
77. **Comparing Greenhouse Gases** *Reilly et al.* July 2001
78. **Quantifying Uncertainties in Climate System Properties using Recent Climate Observations** *Forest et al.* July 2001
79. **Uncertainty in Emissions Projections for Climate Models** *Webster et al.* August 2001
80. **Uncertainty in Atmospheric CO₂ Predictions from a Global Ocean Carbon Cycle Model** *Holian et al.* September 2001
81. **A Comparison of the Behavior of AO GCMs in Transient Climate Change Experiments** *Sokolov et al.* December 2001
82. **The Evolution of a Climate Regime: Kyoto to Marrakech** *Babiker, Jacoby & Reiner* February 2002
83. **The "Safety Valve" and Climate Policy** *Jacoby & Ellerman* February 2002
84. **A Modeling Study on the Climate Impacts of Black Carbon Aerosols** *Wang* March 2002
85. **Tax Distortions and Global Climate Policy** *Babiker et al.* May 2002
86. **Incentive-based Approaches for Mitigating Greenhouse Gas Emissions: Issues and Prospects for India** *Gupta* June 2002
87. **Deep-Ocean Heat Uptake in an Ocean GCM with Idealized Geometry** *Huang, Stone & Hill* September 2002
88. **The Deep-Ocean Heat Uptake in Transient Climate Change** *Huang et al.* September 2002
89. **Representing Energy Technologies in Top-down Economic Models using Bottom-up Information** *McFarland et al.* October 2002
90. **Ozone Effects on Net Primary Production and Carbon Sequestration in the U.S. Using a Biogeochemistry Model** *Felzer et al.* November 2002
91. **Exclusionary Manipulation of Carbon Permit Markets: A Laboratory Test** *Carlén* November 2002
92. **An Issue of Permanence: Assessing the Effectiveness of Temporary Carbon Storage** *Herzog et al.* December 2002
93. **Is International Emissions Trading Always Beneficial?** *Babiker et al.* December 2002
94. **Modeling Non-CO₂ Greenhouse Gas Abatement** *Hyman et al.* December 2002
95. **Uncertainty Analysis of Climate Change and Policy Response** *Webster et al.* December 2002
96. **Market Power in International Carbon Emissions Trading: A Laboratory Test** *Carlén* January 2003
97. **Emissions Trading to Reduce Greenhouse Gas Emissions in the United States: The McCain-Lieberman Proposal** *Paltsev et al.* June 2003
98. **Russia's Role in the Kyoto Protocol** *Bernard et al.* Jun '03
99. **Thermohaline Circulation Stability: A Box Model Study** *Lucarini & Stone* June 2003
100. **Absolute vs. Intensity-Based Emissions Caps** *Ellerman & Sue Wing* July 2003
101. **Technology Detail in a Multi-Sector CGE Model: Transport Under Climate Policy** *Schafer & Jacoby* July 2003
102. **Induced Technical Change and the Cost of Climate Policy** *Sue Wing* September 2003
103. **Past and Future Effects of Ozone on Net Primary Production and Carbon Sequestration Using a Global Biogeochemical Model** *Felzer et al.* (revised) January 2004
104. **A Modeling Analysis of Methane Exchanges Between Alaskan Ecosystems and the Atmosphere** *Zhuang et al.* November 2003

Contact the Joint Program Office to request a copy. The Report Series is distributed at no charge.

REPORT SERIES of the MIT Joint Program on the Science and Policy of Global Change

105. **Analysis of Strategies of Companies under Carbon Constraint** Hashimoto January 2004
106. **Climate Prediction: The Limits of Ocean Models** Stone February 2004
107. **Informing Climate Policy Given Incommensurable Benefits Estimates** Jacoby February 2004
108. **Methane Fluxes Between Terrestrial Ecosystems and the Atmosphere at High Latitudes During the Past Century** Zhuang et al. March 2004
109. **Sensitivity of Climate to Diapycnal Diffusivity in the Ocean** Dalan et al. May 2004
110. **Stabilization and Global Climate Policy** Sarofim et al. July 2004
111. **Technology and Technical Change in the MIT EPPA Model** Jacoby et al. July 2004
112. **The Cost of Kyoto Protocol Targets: The Case of Japan** Paltsev et al. July 2004
113. **Economic Benefits of Air Pollution Regulation in the USA: An Integrated Approach** Yang et al. (revised) Jan. 2005
114. **The Role of Non-CO₂ Greenhouse Gases in Climate Policy: Analysis Using the MIT IGSM** Reilly et al. Aug. '04
115. **Future U.S. Energy Security Concerns** Deutch Sep. '04
116. **Explaining Long-Run Changes in the Energy Intensity of the U.S. Economy** Sue Wing Sept. 2004
117. **Modeling the Transport Sector: The Role of Existing Fuel Taxes in Climate Policy** Paltsev et al. November 2004
118. **Effects of Air Pollution Control on Climate** Prinn et al. January 2005
119. **Does Model Sensitivity to Changes in CO₂ Provide a Measure of Sensitivity to the Forcing of Different Nature?** Sokolov March 2005
120. **What Should the Government Do To Encourage Technical Change in the Energy Sector?** Deutch May '05
121. **Climate Change Taxes and Energy Efficiency in Japan** Kasahara et al. May 2005
122. **A 3D Ocean-Seaice-Carbon Cycle Model and its Coupling to a 2D Atmospheric Model: Uses in Climate Change Studies** Dutkiewicz et al. (revised) November 2005
123. **Simulating the Spatial Distribution of Population and Emissions to 2100** Asadoorian May 2005
124. **MIT Integrated Global System Model (IGSM) Version 2: Model Description and Baseline Evaluation** Sokolov et al. July 2005
125. **The MIT Emissions Prediction and Policy Analysis (EPPA) Model: Version 4** Paltsev et al. August 2005
126. **Estimated PDFs of Climate System Properties Including Natural and Anthropogenic Forcings** Forest et al. September 2005
127. **An Analysis of the European Emission Trading Scheme** Reilly & Paltsev October 2005
128. **Evaluating the Use of Ocean Models of Different Complexity in Climate Change Studies** Sokolov et al. November 2005
129. **Future Carbon Regulations and Current Investments in Alternative Coal-Fired Power Plant Designs** Sekar et al. December 2005
130. **Absolute vs. Intensity Limits for CO₂ Emission Control: Performance Under Uncertainty** Sue Wing et al. January 2006
131. **The Economic Impacts of Climate Change: Evidence from Agricultural Profits and Random Fluctuations in Weather** Deschenes & Greenstone January 2006
132. **The Value of Emissions Trading** Webster et al. Feb. 2006
133. **Estimating Probability Distributions from Complex Models with Bifurcations: The Case of Ocean Circulation Collapse** Webster et al. March 2006
134. **Directed Technical Change and Climate Policy** Otto et al. April 2006
135. **Modeling Climate Feedbacks to Energy Demand: The Case of China** Asadoorian et al. June 2006
136. **Bringing Transportation into a Cap-and-Trade Regime** Ellerman, Jacoby & Zimmerman June 2006
137. **Unemployment Effects of Climate Policy** Babiker & Eckaus July 2006
138. **Energy Conservation in the United States: Understanding its Role in Climate Policy** Metcalf Aug. '06
139. **Directed Technical Change and the Adoption of CO₂ Abatement Technology: The Case of CO₂ Capture and Storage** Otto & Reilly August 2006
140. **The Allocation of European Union Allowances: Lessons, Unifying Themes and General Principles** Buchner et al. October 2006
141. **Over-Allocation or Abatement? A preliminary analysis of the EU ETS based on the 2006 emissions data** Ellerman & Buchner December 2006
142. **Federal Tax Policy Towards Energy** Metcalf Jan. 2007
143. **Technical Change, Investment and Energy Intensity** Kratena March 2007
144. **Heavier Crude, Changing Demand for Petroleum Fuels, Regional Climate Policy, and the Location of Upgrading Capacity** Reilly et al. April 2007
145. **Biomass Energy and Competition for Land** Reilly & Paltsev April 2007
146. **Assessment of U.S. Cap-and-Trade Proposals** Paltsev et al. April 2007
147. **A Global Land System Framework for Integrated Climate-Change Assessments** Schlosser et al. May 2007
148. **Relative Roles of Climate Sensitivity and Forcing in Defining the Ocean Circulation Response to Climate Change** Scott et al. May 2007
149. **Global Economic Effects of Changes in Crops, Pasture, and Forests due to Changing Climate, CO₂ and Ozone** Reilly et al. May 2007
150. **U.S. GHG Cap-and-Trade Proposals: Application of a Forward-Looking Computable General Equilibrium Model** Gurgel et al. June 2007
151. **Consequences of Considering Carbon/Nitrogen Interactions on the Feedbacks between Climate and the Terrestrial Carbon Cycle** Sokolov et al. June 2007
152. **Energy Scenarios for East Asia: 2005-2025** Paltsev & Reilly July 2007
153. **Climate Change, Mortality, and Adaptation: Evidence from Annual Fluctuations in Weather in the U.S.** Deschênes & Greenstone August 2007

Contact the Joint Program Office to request a copy. The Report Series is distributed at no charge.

REPORT SERIES of the MIT Joint Program on the Science and Policy of Global Change

- 154. Modeling the Prospects for Hydrogen Powered Transportation Through 2100** *Sandoval et al.* February 2008
- 155. Potential Land Use Implications of a Global Biofuels Industry** *Gurgel et al.* March 2008
- 156. Estimating the Economic Cost of Sea-Level Rise** *Sugiyama et al.* April 2008
- 157. Constraining Climate Model Parameters from Observed 20th Century Changes** *Forest et al.* April 2008
- 158. Analysis of the Coal Sector under Carbon Constraints** *McFarland et al.* April 2008
- 159. Impact of Sulfur and Carbonaceous Emissions from International Shipping on Aerosol Distributions and Direct Radiative Forcing** *Wang & Kim* April 2008
- 160. Analysis of U.S. Greenhouse Gas Tax Proposals** *Metcalf et al.* April 2008
- 161. A Forward Looking Version of the MIT Emissions Prediction and Policy Analysis (EPPA) Model** *Babiker et al.* May 2008
- 162. The European Carbon Market in Action: Lessons from the first trading period** Interim Report *Convery, Ellerman, & de Perthuis* June 2008
- 163. The Influence on Climate Change of Differing Scenarios for Future Development Analyzed Using the MIT Integrated Global System Model** *Prinn et al.* September 2008
- 164. Marginal Abatement Costs and Marginal Welfare Costs for Greenhouse Gas Emissions Reductions: Results from the EPPA Model** *Holak et al.* November 2008
- 165. Uncertainty in Greenhouse Emissions and Costs of Atmospheric Stabilization** *Webster et al.* November 2008
- 166. Sensitivity of Climate Change Projections to Uncertainties in the Estimates of Observed Changes in Deep-Ocean Heat Content** *Sokolov et al.* November 2008
- 167. Sharing the Burden of GHG Reductions** *Jacoby et al.* November 2008
- 168. Unintended Environmental Consequences of a Global Biofuels Program** *Melillo et al.* January 2009
- 169. Probabilistic Forecast for 21st Century Climate Based on Uncertainties in Emissions (without Policy) and Climate Parameters** *Sokolov et al.* January 2009
- 170. The EU's Emissions Trading Scheme: A Proto-type Global System?** *Ellerman* February 2009
- 171. Designing a U.S. Market for CO₂** *Parsons et al.* February 2009
- 172. Prospects for Plug-in Hybrid Electric Vehicles in the United States & Japan: A General Equilibrium Analysis** *Karplus et al.* April 2009
- 173. The Cost of Climate Policy in the United States** *Paltsev et al.* April 2009
- 174. A Semi-Empirical Representation of the Temporal Variation of Total Greenhouse Gas Levels Expressed as Equivalent Levels of Carbon Dioxide** *Huang et al.* June 2009
- 175. Potential Climatic Impacts and Reliability of Very Large Scale Wind Farms** *Wang & Prinn* June 2009
- 176. Biofuels, Climate Policy and the European Vehicle Fleet** *Gitiaux et al.* August 2009
- 177. Global Health and Economic Impacts of Future Ozone Pollution** *Selin et al.* August 2009
- 178. Measuring Welfare Loss Caused by Air Pollution in Europe: A CGE Analysis** *Nam et al.* August 2009
- 179. Assessing Evapotranspiration Estimates from the Global Soil Wetness Project Phase 2 (GSWP-2) Simulations** *Schlosser and Gao* September 2009
- 180. Analysis of Climate Policy Targets under Uncertainty** *Webster et al.* September 2009
- 181. Development of a Fast and Detailed Model of Urban-Scale Chemical and Physical Processing** *Cohen & Prinn* October 2009
- 182. Distributional Impacts of a U.S. Greenhouse Gas Policy: A General Equilibrium Analysis of Carbon Pricing** *Rausch et al.* November 2009
- 183. Canada's Bitumen Industry Under CO₂ Constraints** *Chan et al.* January 2010
- 184. Will Border Carbon Adjustments Work?** *Winchester et al.* February 2010
- 185. Distributional Implications of Alternative U.S. Greenhouse Gas Control Measures** *Rausch et al.* June 2010
- 186. The Future of U.S. Natural Gas Production, Use, and Trade** *Paltsev et al.* June 2010
- 187. Combining a Renewable Portfolio Standard with a Cap-and-Trade Policy: A General Equilibrium Analysis** *Morris et al.* July 2010
- 188. On the Correlation between Forcing and Climate Sensitivity** *Sokolov* August 2010
- 189. Modeling the Global Water Resource System in an Integrated Assessment Modeling Framework: IGSM-WRS** *Strzepek et al.* September 2010
- 190. Climatology and Trends in the Forcing of the Stratospheric Zonal-Mean Flow** *Monier and Weare* January 2011
- 191. Climatology and Trends in the Forcing of the Stratospheric Ozone Transport** *Monier and Weare* January 2011
- 192. The Impact of Border Carbon Adjustments under Alternative Producer Responses** *Winchester* February 2011
- 193. What to Expect from Sectoral Trading: A U.S.-China Example** *Gavard et al.* February 2011
- 194. General Equilibrium, Electricity Generation Technologies and the Cost of Carbon Abatement** *Lanz and Rausch* February 2011
- 195. A Method for Calculating Reference Evapotranspiration on Daily Time Scales** *Farmer et al.* February 2011
- 196. Health Damages from Air Pollution in China** *Matus et al.* March 2011
- 197. The Prospects for Coal-to-Liquid Conversion: A General Equilibrium Analysis** *Chen et al.* May 2011

REPORT SERIES of the **MIT Joint Program on the Science and Policy of Global Change**

198. The Impact of Climate Policy on U.S. Aviation

Winchester et al. May 2011

199. Future Yield Growth: What Evidence from Historical

Data Gitiiaux et al. May 2011

**200. A Strategy for a Global Observing System for
Verification of National Greenhouse Gas Emissions**

Prinn et al. June 2011

201. Russia's Natural Gas Export Potential up to 2050

Paltsev July 2011

**202. Distributional Impacts of Carbon Pricing: A General
Equilibrium Approach with Micro-Data for Households**

Rausch et al. July 2011

203. Global Aerosol Health Impacts: Quantifying

Uncertainties Selin et al. August 2011

**204. Implementation of a Cloud Radiative Adjustment
Method to Change the Climate Sensitivity of CAM3**

Sokolov and Monier September 2011

**205. Quantifying the Likelihood of Regional Climate
Change: A Hybridized Approach Schlosser et al.** Oct 2011

**206. Process Modeling of Global Soil Nitrous Oxide
Emissions Saikawa et al.** October 2011