

# Capturing optically important constituents and properties in a marine biogeochemical and ecosystem model\*

S. Dutkiewicz, A.E. Hickman, O. Jahn, W.W. Gregg,  
C.B. Mouw and M.J. Follows



\*Reprinted with permission from  
*Biogeosciences* 12, 4447–4481  
© 2015 the authors

Reprint 2015-16

The MIT Joint Program on the Science and Policy of Global Change combines cutting-edge scientific research with independent policy analysis to provide a solid foundation for the public and private decisions needed to mitigate and adapt to unavoidable global environmental changes. Being data-driven, the Program uses extensive Earth system and economic data and models to produce quantitative analysis and predictions of the risks of climate change and the challenges of limiting human influence on the environment—essential knowledge for the international dialogue toward a global response to climate change.

To this end, the Program brings together an interdisciplinary group from two established MIT research centers: the Center for Global Change Science (CGCS) and the Center for Energy and Environmental Policy Research (CEEPR). These two centers—along with collaborators from the Marine Biology Laboratory (MBL) at Woods Hole and short- and long-term visitors—provide the united vision needed to solve global challenges.

At the heart of much of the Program's work lies MIT's Integrated Global System Model. Through this integrated model, the Program seeks to: discover new interactions among natural and human climate system components; objectively assess uncertainty in economic and climate projections; critically and quantitatively analyze environmental management and policy proposals; understand complex connections among the many forces that will shape our future; and improve methods to model, monitor and verify greenhouse gas emissions and climatic impacts.

This reprint is one of a series intended to communicate research results and improve public understanding of global environment and energy challenges, thereby contributing to informed debate about climate change and the economic and social implications of policy alternatives.

Ronald G. Prinn and John M. Reilly,  
*Program Co-Directors*

**For more information, contact the Program office:**

MIT Joint Program on the Science and Policy of Global Change

**Postal Address:**

Massachusetts Institute of Technology  
77 Massachusetts Avenue, E19-411  
Cambridge, MA 02139 (USA)

**Location:**

Building E19, Room 411  
400 Main Street, Cambridge

**Access:**

Tel: (617) 253-7492

Fax: (617) 253-9845

Email: [globalchange@mit.edu](mailto:globalchange@mit.edu)

Website: <http://globalchange.mit.edu/>



# Capturing optically important constituents and properties in a marine biogeochemical and ecosystem model

S. Dutkiewicz<sup>1</sup>, A. E. Hickman<sup>2</sup>, O. Jahn<sup>3</sup>, W. W. Gregg<sup>4</sup>, C. B. Mouw<sup>5</sup>, and M. J. Follows<sup>3</sup>

<sup>1</sup>Center for Global Change Science and Department of Earth, Atmospheric and Planetary Sciences, Massachusetts Institute of Technology, Cambridge, MA 02139, USA

<sup>2</sup>Ocean and Earth Science, University of Southampton, National Oceanography Centre Southampton, Southampton, SO14 3ZH, UK

<sup>3</sup>Department of Earth, Atmospheric and Planetary Sciences, Massachusetts Institute of Technology, Cambridge, MA 02139, USA

<sup>4</sup>Global Modeling and Assimilation Office, NASA Goddard Space Flight Center, Greenbelt, MD 20771 USA

<sup>5</sup>Department of Geological and Mining Engineering and Sciences, Michigan Technological University, Houghton, MI 49931, USA

Correspondence to: S. Dutkiewicz (stephd@mit.edu)

Received: 8 December 2014 – Published in Biogeosciences Discuss.: 4 February 2015

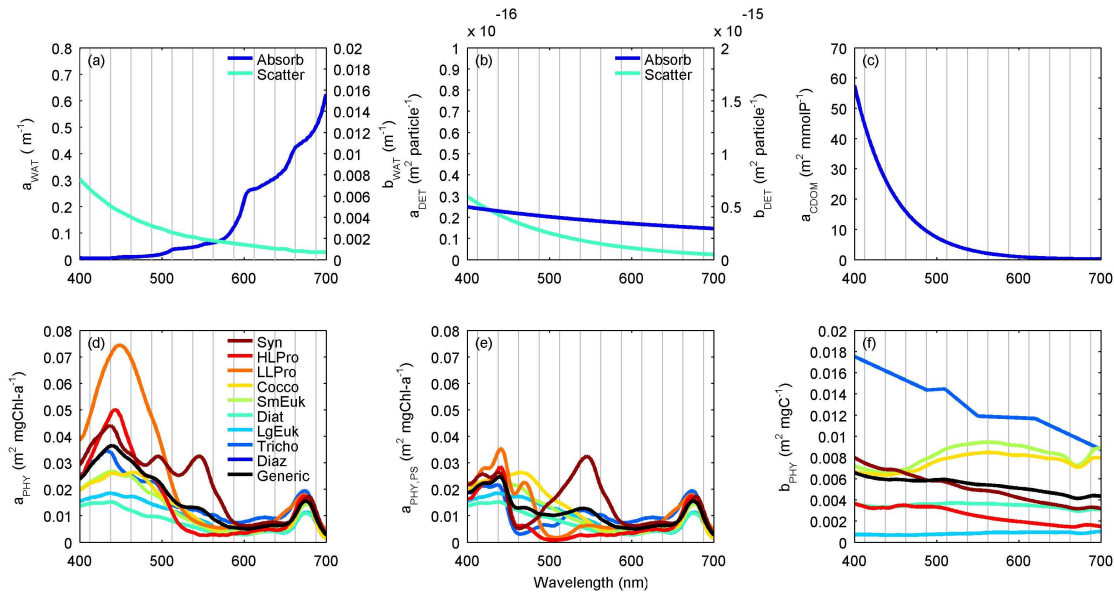
Revised: 15 June 2015 – Accepted: 4 July 2015 – Published: 29 July 2015

**Abstract.** We present a numerical model of the ocean that couples a three-stream radiative transfer component with a marine biogeochemical–ecosystem component in a dynamic three-dimensional physical framework. The radiative transfer component resolves the penetration of spectral irradiance as it is absorbed and scattered within the water column. We explicitly include the effect of several optically important water constituents (different phytoplankton functional types; detrital particles; and coloured dissolved organic matter, CDOM). The model is evaluated against in situ-observed and satellite-derived products. In particular we compare to concurrently measured biogeochemical, ecosystem, and optical data along a meridional transect of the Atlantic Ocean. The simulation captures the patterns and magnitudes of these data, and estimates surface upwelling irradiance analogous to that observed by ocean colour satellite instruments. We find that incorporating the different optically important constituents explicitly and including spectral irradiance was crucial to capture the variability in the depth of the subsurface chlorophyll *a* (Chl *a*) maximum. We conduct a series of sensitivity experiments to demonstrate, globally, the relative importance of each of the water constituents, as well as the crucial feedbacks between the light field, the relative fitness of phytoplankton types, and the biogeochemistry of the ocean. CDOM has proportionally more importance at at-

tenuating light at short wavelengths and in more productive waters, phytoplankton absorption is relatively more important at the subsurface Chl *a* maximum, and water molecules have the greatest contribution when concentrations of other constituents are low, such as in the oligotrophic gyres. Scattering had less effect on attenuation, but since it is important for the amount and type of upwelling irradiance, it is crucial for setting sea surface reflectance. Strikingly, sensitivity experiments in which absorption by any of the optical constituents was increased led to a decrease in the size of the oligotrophic regions of the subtropical gyres: lateral nutrient supplies were enhanced as a result of decreasing high-latitude productivity. This new model that captures bio-optical feedbacks will be important for improving our understanding of the role of light and optical constituents on ocean biogeochemistry, especially in a changing environment. Further, resolving surface upwelling irradiance will make it easier to connect to satellite-derived products in the future.

## 1 Introduction

Light is fundamental to phytoplankton and photosynthesis. Understanding ocean productivity therefore requires detailed knowledge of how light penetrates through seawater.



**Figure 1.** Spectra for (a) absorption and scattering by water molecules ( $a_w, b_w, \text{m}^{-1}$ ); (b) particle-specific absorption and scattering by detritus ( $a_{\text{det}}^{\text{part}}, b_{\text{det}}^{\text{part}}, \text{m}^2 \text{particle}^{-1}$ ); (c) CDOM-specific absorption by CDOM ( $a_{\text{cdom}}^{\text{CDOM}}, \text{m}^2 (\text{mmolP})^{-1}$ ); (d) Chl *a*-specific total absorption by phytoplankton ( $a_{\text{phy}}^{\text{chl}}, \text{m}^2 (\text{mg Chl } a)^{-1}$ ); (e) Chl *a*-specific absorption by photosynthetic pigments ( $a_{\text{psj}}^{\text{chl}}, \text{m}^2 (\text{mg Chl } a)^{-1}$ ); and (f) biomass-specific scattering by phytoplankton ( $b_{\text{phyj}}^{\text{C}}, \text{m}^2 (\text{mgC})^{-1}$ ). Details on data sources are included in the main text and Appendix Sect. C. The black line in (d–f) is the mean of the coloured lines (i.e. the mean spectrum). Spectra are shown here with 1 nm resolution for clarity; the model uses the average over the 25 nm bands (vertical grey lines).

ter. Attenuation of light within the water column is an interaction of absorption and scattering by “optically important constituents”, including water molecules, detrital matter, coloured dissolved organic matter (CDOM), and the phytoplankton themselves.

Phytoplankton absorb light in the visible spectrum (400 and 700 nm). The optical constituents attenuate these wavelengths differently. For instance, water molecules absorb very strongly in the longer wavelengths (Fig. 1a), while detrital matter and CDOM absorb more in the shorter wavelengths (Fig. 1b, c). Thus the spectrum of light at any location is a complex function of the combination of different optical constituents in the overlying water. Previous studies have highlighted the importance of resolving the spectral light field (e.g. Fujii et al., 2007; Kettle and Merchant, 2009), especially as different species of phytoplankton have different light absorption spectra (e.g. Stramksi et al., 2001; Sathyendranath and Platt, 2007). This difference in efficiency of light absorption by phytoplankton is important for their relative fitness and biogeography (Bidigare et al., 1990a; Huisman and Weissing, 1995; Moore and Chisholm, 1999; Stomp et al., 2004; Hickman et al., 2010).

Much is known about the optics of water (e.g. Pope and Fry, 1997; Smith and Baker, 1981; Morel, 1974; Zhang and Hu, 2009; Kirk, 1994). Although much is known about the distributions of CDOM (Nelson and Siegel, 2013), detritus (Loisel, 2002), and phytoplankton (IOCCG report 15, 2014)

it remains unclear how their distributions feed back to phytoplankton community structure and biogeochemistry. Numerical models provide useful tools to explore these interactions, but to do so requires an appropriately detailed description of the photosynthetically available radiation (PAR).

Several recent models resolve the light spectrum and some of the absorption and scattering properties of different constituents (e.g. Mobley et al., 2009; Fujii et al., 2007; Gregg and Casey, 2007; Bisset et al., 1999). Such models include fully coupled radiative transfer, but differ in the levels of simplification for computational efficiency (e.g. Fujii et al., 2007; Gregg and Casey, 2007) and differ in which and how they treat the different water constituents. For instance, CDOM is treated as uniform in Fujii et al. (2007), and linked to chlorophyll *a* (Chl *a*) in Gregg and Casey (2007). Fujii et al. (2007) suggested that including explicit optics in an ecosystem model allowed a more accurate subsurface light field as well as additional constraints on model parameters. Several additional studies have demonstrated the value of adding optics to biogeochemical models (e.g. Babin et al., 1993; Sathyendranath and Platt, 2007; Kettle and Merchant, 2008).

In Sect. 2 we introduce an updated version of the MIT biogeochemistry and ecosystem model (Follows et al., 2007; Dutkiewicz et al., 2012) with a radiative transfer component as well as the explicit treatment of several optical constituents (water molecules, detrital matter, CDOM,

and a community of optically distinct phytoplankton types). Specifically, each constituent is treated independently. The fully coupled radiative transfer allows us to calculate spectral surface upwelling irradiance; a product similar to that measured by ocean colour satellites. We show results from this new coupled model where the light field is a dynamic function of the different optical constituents and evaluate against several data sets (Sect. 3). In particular, we use a comprehensive data set from an Atlantic Meridional Transect cruise which includes detailed concurrent optical, biogeochemical, and ecosystem observations between the UK and South Africa in September/October of 2004 (AMT-15). Some of the observations are published here for the first time. The data set is ideal for evaluating how our model captures the amount and nature of the light that penetrates the water column across basin scale along with the relevant ecological properties.

We perform a number of sensitivity experiments that explore the value of the additional model complexity (Sect. 4), the role of each of the water constituents (Sect. 5), and their relative importance. The model allows us to investigate how changes to any constituent feed back to the system, impacting phytoplankton biogeography, biogeochemistry, and surface irradiance reflectance.

## 2 Model description

The biogeochemical–ecosystem model resolves the cycling of carbon, phosphorus, nitrogen, silica, iron, and oxygen through inorganic, living, dissolved, and particulate organic phases as discussed in Follows et al. (2007), Dutkiewicz et al. (2009, 2012), and Hickman et al. (2010). The biogeochemical and biological tracers are transported and mixed by a the MIT general circulation model (MITgcm) (Marshall et al., 1997). The physical framework is flexible, but here we employ a global configuration which is constrained to be consistent with altimetric and hydrographic observations (the ECCO-GODAE state estimates; Wunsch and Heimbach, 2007). This three-dimensional configuration has  $1^\circ \times 1^\circ$  horizontal resolution and 23 levels ranging from 10 m in the surface to 500 m at depth. These physical fields have been used in many previous biogeochemical–ecosystem studies (e.g. Follows et al., 2007; Dutkiewicz et al., 2009, 2012; Ward et al., 2012; Prowe et al., 2012).

Similar to several of these previous studies, we resolve several phytoplankton types,  $P_j$ , as well as two simple grazers,  $Z_k$ . The biogeochemical and biological tracers interact through the formation, transformation, and remineralization of organic matter. Excretion and mortality transfer living organic material into sinking particulate and dissolved organic detritus, which are respired back to inorganic form. Aeolian iron fluxes to the ocean surface are provided by Luo et al. (2008).

We provide complete model equations, description and parameter values in Appendix Sect. A and Tables 1 to 6. Here we focus on the relevant new features: in particular an explicit radiative transfer component that allows us to consider absorption and scattering of light spectrally and with attention to each of the relevant optical constituents.

### 2.1 Radiative transfer model

Irradiance just below the surface of the ocean is provided by the Ocean–Atmosphere Spectral Irradiance Model (OASIM) (Gregg and Casey, 2009) in two downward streams: direct ( $E_{d_o}^{\text{below}}$ ) and diffuse ( $E_{s_o}^{\text{below}}$ ). OASIM includes the impact of clouds, water vapour, and aerosols in the atmosphere and surface roughness and reflectance at the ocean–atmosphere interface. Irradiances are provided averaged in 25 nm wavebands from 400 to 700 nm. The two downward light streams (direct and diffuse,  $E_d$ ,  $E_s$ ) in each waveband are followed through the water column. Irradiance is attenuated by absorption ( $a$ ), and scattering ( $b$ ), which includes both forward ( $b_f$ ) and backward ( $b_b$ ) components. Scattering diverts irradiance from the direct and diffuse beams and partitions it between the downward diffuse and upwelling stream ( $E_u$ ).

We parameterize this “three-stream” irradiance model following Aas (1987), Ackleson et al. (1994), and Gregg (2002). The model is described by the simultaneous equations for the light streams in each waveband ( $\lambda$ ) with depth ( $z$ ):

$$\frac{dE_d(\lambda)}{dz} = -\frac{a(\lambda) + b(\lambda)}{\bar{v}_d} E_d(\lambda), \quad (1)$$

$$\begin{aligned} \frac{dE_s(\lambda)}{dz} = & -\frac{a(\lambda) + r_s b_b(\lambda)}{\bar{v}_s} E_s(\lambda) \\ & + \frac{r_u b_b(\lambda)}{\bar{v}_u} E_u(\lambda) + \frac{b_f(\lambda)}{\bar{v}_d} E_d(\lambda), \end{aligned} \quad (2)$$

$$\begin{aligned} -\frac{dE_u(\lambda)}{dz} = & -\frac{a(\lambda) + r_u b_b(\lambda)}{\bar{v}_u} E_u(\lambda) \\ & + \frac{r_s b_b(\lambda)}{\bar{v}_s} E_s(\lambda) + \frac{b_b(\lambda)}{\bar{v}_d} E_d(\lambda), \end{aligned} \quad (3)$$

where  $r_s$ ,  $r_u$ , and  $r_d$  are the effective scattering coefficients that are normalized by backward scattering coefficients;  $\bar{v}_d$ ,  $\bar{v}_s$ , and  $\bar{v}_u$  are the average cosines (definition in Appendix Sect. B); and the radiance is separated into a direct beam and a diffuse component.

This set of equations can be simplified following Aas (1987) by approximating  $r_s$ ,  $r_u$ ,  $r_d$ ,  $\bar{v}_s$ , and  $\bar{v}_u$  with constant values (see Appendix Sect. B). With these assumptions, the set of equations can be reduced to a tri-diagonal system. In contrast to Aas (1987), Ackleson et al. (1994), and Gregg (2002) we solve  $E_d(\lambda)$ ,  $E_s(\lambda)$ , and  $E_u(\lambda)$  directly at each location and at each depth using Gaussian elimination.

We calculate total scalar irradiance,  $E_0(\lambda)$ , in each waveband at each location and layer (averaged, multiplicatively, between the top and bottom) by scaling the irradiance by the

**Table 1.** Fixed biogeochemical–ecosystem model parameters (1).

Parameter	Symbol	Fixed value	Units
Temperature coefficients	$A_E$	−4000	K
	$T_o$	293.15	K
Temperature normalization	$\tau_1$	0.8	unitless
DOM remineralization	$r_{dop}$	0.0333	d <sup>−1</sup>
Rate at 30 °C	$r_{don}$	0.0333	d <sup>−1</sup>
	$r_{dofe}$	0.0333	d <sup>−1</sup>
	$r_{doc}$	0.0333	d <sup>−1</sup>
	$r_{pop}$	0.05	d <sup>−1</sup>
POM remineralization	$r_{pon}$	0.0333	d <sup>−1</sup>
	$r_{pofe}$	0.0333	d <sup>−1</sup>
	$r_{posi}$	0.0067	d <sup>−1</sup>
	$r_{poc}$	0.0333	d <sup>−1</sup>
	$d_{pic}$	0.0033	d <sup>−1</sup>
PIC dissolution rate	$d_{pic}$	0.0033	d <sup>−1</sup>
POM sinking rate	$w_{pom}$	10	m d <sup>−1</sup>
PIC sinking rate	$w_{pic}$	15	m d <sup>−1</sup>
Fraction DOM to CDOM	$f_{cdom}$	0.02	unitless
Bleaching rate for CDOM	$t_{cdom}$	0.167	d <sup>−1</sup>
Degradation rate for CDOM	$d_{cdom}$	0.003	d <sup>−1</sup>
Light level for bleaching CDOM	$I_{cdom}$	60	μE m <sup>−2</sup> s <sup>−1</sup>
CDOM absorption at $\lambda_o$	$c_{cdom}(\lambda_o)$	0.18	m <sup>2</sup> (mmol C) <sup>−1</sup>
Reference waveband	$\lambda_o$	450	nm
CDOM absorption spectral slope	$s_{cdom}$	0.021	(nm) <sup>−1</sup>
POC to particle conversion	$p_{part}$	$1 \times 10^{-15}$	mmol C (particle) <sup>−1</sup>

inverse average cosines:

$$E_0(\lambda) = \frac{E_d(\lambda)}{\bar{u}_d} + \frac{E_s(\lambda)}{\bar{u}_s} + \frac{E_u(\lambda)}{\bar{u}_u}. \quad (4)$$

This is the light available to the phytoplankton.

We note that the radiative transfer component is a simplification from a full radiance model and, in particular, does not resolve the angular distribution of light or angular dependence of scattering. These assumptions have been shown to be small in terms of the needs for ecosystem models (Mobley et al., 2009). Though not a full radiative transfer model, our three-stream treatment does provide the relevant output for our objectives: the spectral light available for photosynthesis and an upwelling component that at the sea surface is similar to that seen by a satellite.

## 2.2 Surface reflectance

Since the model resolves an upwelling stream of irradiance, we can calculate a surface reflectance (unitless):

$$R(\lambda) = \frac{E_u^{\text{below}}(\lambda)|_{k=0}}{E_{d_o}^{\text{below}}(\lambda) + E_{s_o}^{\text{below}}(\lambda)}, \quad (5)$$

where  $E_u^{\text{below}}(\lambda)|_{k=0}$  is upwelling irradiance just below the surface and  $E_{d_o}^{\text{below}}(\lambda) + E_{s_o}^{\text{below}}(\lambda)$  represents the downward (direct and diffuse) irradiance just below the surface as provided by OASIM.

To compare to remotely sensed reflectance ( $R_{RS}$ ) we convert between model subsurface reflectance and the slant upward radiance seen by satellite by using a bidirectional function  $Q$ :

$$R_{RS}(\lambda) = \frac{R(\lambda)}{Q}. \quad (6)$$

The bidirectional function  $Q$  has values between 3.5 and 5 sr depending on many variables, including inherent optical properties of the water, wavelength, and solar zenith angles (Morel et al., 2002; Voss et al., 2007). For simplicity here we assume that  $Q = 4$  sr. Model  $R_{RS}$  is therefore analogous but not exactly the same as that measured by satellite.  $R_{RS}$  has units of sr<sup>−1</sup>.

## 2.3 Treatment of water constituents

Attenuation of irradiance results from absorption by water molecules ( $a_w$ ), phytoplankton ( $a_{phy}$ ), detrital particles ( $a_{det}$ ), and CDOM ( $a_{cdom}$ ) and from scattering by water molecules ( $b_w$ ), phytoplankton ( $b_{phy}$ ), and detrital particles ( $b_{det}$ ). The absorption ( $a$ ), total scattering ( $b$ ), and backward scattering ( $b_b$ ) (all with units of m<sup>−1</sup>) are represented as

**Table 2.** Fixed biogeochemical–ecosystem model parameters (2).

Parameter	Symbol	Fixed value	Units
NH <sub>4</sub> to NO <sub>2</sub> oxidation rate	$\zeta_{\text{no2}}$	0.1	d <sup>-1</sup>
NO <sub>2</sub> to NO <sub>3</sub> oxidation rate	$\zeta_{\text{nh4}}$	0.1	d <sup>-1</sup>
Critical PAR for oxidation	$I_{\text{ox}}$	10	$\mu\text{E m}^{-2} \text{s}^{-1}$
Critical oxygen for denitrification	$O_{\text{crit}}$	6	$\text{mmol O}_2 \text{m}^{-3}$
Ratio N : P in denitrification	$R_{\text{denit}}$	120	unitless
Ratio NO <sub>3</sub> to all N in denitrification	$R_{\text{dno3}}$	104	unitless
Ligand binding strength	$\beta_{\text{fe}}$	$2 \times 10^5$	$\text{m}^3 (\text{mmol Fe})^{-1}$
Total ligand	$L_{\text{T}}$	$1 \times 10^{-3}$	$\text{mmol Fe m}^{-3}$
Scavenging rate coefficient	$c_o$	$1.2 \times 10^{-3}$	d <sup>-1</sup>
Scavenging power coefficient	$\xi$	0.58	unitless
Sedimentation rate ratio	$R_{\text{sed}}$	$6.8 \times 10^{-4}$	$\text{mmol Fe} (\text{mmol C})^{-1}$
Chl <i>a</i> acclimation timescale	$t_{\text{chl}}$	0.5	d <sup>-1</sup>
Ammonia inhibition	$\psi$	4.6	$\text{m}^3 (\text{mmol N})^{-1}$

a function of waveband:

$$a(\lambda) = a_w(\lambda) + a_{\text{phy}}(\lambda) + a_{\text{det}}(\lambda) + a_{\text{cdom}}(\lambda), \quad (7)$$

$$b(\lambda) = b_w(\lambda) + b_{\text{phy}}(\lambda) + b_{\text{det}}(\lambda), \quad (8)$$

$$b_b(\lambda) = b_{\text{bw}}(\lambda) + b_{\text{bphy}}(\lambda) + b_{\text{bdet}}(\lambda). \quad (9)$$

In the model we use absorption and scattering coefficients (Fig. 1) averaged over 25 nm bands to match the irradiance input from a variety of sources, detailed below.

### 2.3.1 Water molecules

We assume absorption by water molecules ( $a_w$ ,  $b_w$ ,  $b_{\text{bw}}$ ) to follow the spectrum of Pope and Fry 1997. Scattering is taken from Smith and Baker (1981) and Morel (1974), and backscattering from Morel (1974) and Morel et al. (2007). The spectra for these are shown in Fig. 1a.

### 2.3.2 Detrital matter

The model uses the absorption and scattering spectra for detrital matter (Fig. 1b) from Stramski et al. (2001). These spectra were deduced by assuming an assemblage of particles with size distribution described by a power function with slope of  $-4$ , and the values are given in terms of absorption or scattering per particle (Stramski et al., 2001). Thus we introduce the coefficient  $p_{\text{part}}$  to convert the model particulate organic carbon (POC) to number of particles, making the crude assumption that the size distribution of particles is uniform everywhere. The absorption and scattering by particles

is described as

$$a_{\text{det}}(\lambda) = a_{\text{det}}^{\text{part}}(\lambda) \frac{\text{POC}}{p_{\text{part}}}, \quad (10)$$

$$b_{\text{det}}(\lambda) = b_{\text{det}}^{\text{part}}(\lambda) \frac{\text{POC}}{p_{\text{part}}}, \quad (11)$$

$$b_{\text{bdet}}(\lambda) = b_{\text{bdet}}^{\text{part}}(\lambda) \frac{\text{POC}}{p_{\text{part}}}. \quad (12)$$

Here we use the convention that the superscript on the  $a$ ,  $b$ , and  $b_b$  terms refers to the normalization variable, here particle concentration. Units of  $a_{\text{det}}^{\text{part}}(\lambda)$ ,  $b_{\text{det}}^{\text{part}}(\lambda)$ , and  $b_{\text{bdet}}^{\text{part}}(\lambda)$  are  $\text{m}^2 \text{particle}^{-1}$ .

We note that in the optical community the term “non-algal particles”, or NAP, is frequently used for any non-phytoplankton particles. In this paper we specifically use the term “detritus” instead, as we link to the non-living organic matter pool and do not explicitly resolve other non-algal particles such as viruses and heterotrophic bacteria.

### 2.3.3 Coloured dissolved organic matter

CDOM absorbs highly in the short wavelengths and absorption decreases exponentially with increasing wavelength (Kittidis et al., 2006; Nelson and Siegel, 2013). CDOM is not usually explicitly resolved in marine ecosystem models (exceptions are Xiu and Chai, 2014, and Bissett et al., 1999). Here we have resolved an explicit CDOM-like tracer (denoted “CDOM”) similar to Bissett et al. (1999). The model CDOM has units of concentration ( $\text{mmol C m}^{-3}$ ), and is assumed to have a source that is a fraction ( $f_{\text{cdom}}$ ) of DOM production, to have a long remineralization timescale ( $d_{\text{cdom}}$ ), and to be bleached under high light conditions. The bleaching is parameterized to reach a maximum rate,  $t_{\text{cdom}}$ , when PAR is above  $I_{\text{cdom}}$ , and linearly decreases at lower PAR. The sources and sinks of this CDOM-like tracer are there-

**Table 3.** Phytoplankton-specific parameter description.

Parameter	Symbol	Units
Max. photosyn. rate at 30 °C	$P_{m_{\max j}}^C$	$d^{-1}$
Elemental ratios	$M_{Si:P_j}$	$\text{mol Si (mol P)}^{-1}$
	$M_{N:P_j}$	$\text{mol N (mol P)}^{-1}$
	$M_{Fe:P_j}$	$\text{mmol Fe (mol P)}^{-1}$
	$M_{C:P_j}$	$\text{mol C (mol P)}^{-1}$
Ratio of IC to OP	$R_{r_j}$	$\text{mol C (mol P)}^{-1}$
Growth half-saturation	$\kappa_{po4_j}$	$\text{mmol P m}^{-3}$
	$\kappa_{in_j}$	$\text{mmol N m}^{-3}$
	$\kappa_{nh4_j}$	$\text{mmol N m}^{-3}$
	$\kappa_{fe_j}$	$\mu\text{mol Fe m}^{-3}$
	$\kappa_{si_j}$	$\text{mmol Si m}^{-3}$
	Max. quantum yield	$\phi_{\max j}$
Max. Chl <i>a</i> : C	$\theta_{\max j}$	$\text{mg Chl a (mmol C)}^{-1}$
Chl <i>a</i> -specific absorption	$a_{phy_j}^{chl}(\lambda)$	$\text{m}^2 (\text{mg Chl a})^{-1}$
Photosyn. absorption	$a_{ps_j}^{chl}(\lambda)$	$\text{m}^2 (\text{mg Chl a})^{-1}$
Carbon-specific scattering	$b_{phy_j}^C(\lambda)$	$\text{m}^2 (\text{mg C})^{-1}$
Backscattering	$b_{bphy_j}^C(\lambda)$	$\text{m}^2 (\text{mg C})^{-1}$
Sinking rate	$w_{p_j}$	$\text{m d}^{-1}$
Light inhibition	$\kappa_{inhb_j}$	unitless
Mortality rate at 30 °C	$m_{p_j}$	$d^{-1}$
DOM–POM partitioning	$\varphi_{mp_{ij}}$	unitless
Grazing palatability	$\eta_{jk}$	unitless

fore parameterized as

$$S_{CDOM} = f_{cdom} S_{DOM_s} - \left[ \gamma_T d_{cdom} + \iota_{cdom} \min \left( \frac{\sum_{\lambda=400}^{\lambda=700} E_0(\lambda)}{I_{cdom}}, 1 \right) \right] CDOM, \quad (13)$$

where  $S_{DOM_s}$  represents the sources of DOM (see Appendix Sect. A) and  $\gamma_T$  is the temperature function affecting biological rates.

We parameterize  $a_{cdom}(\lambda)$  as function of “CDOM” such that

$$a_{cdom}(\lambda) = a_{cdom}^{CDOM}(\lambda) CDOM \quad (14)$$

and

$$a_{cdom}^{CDOM}(\lambda) = c_{cdom}(\lambda_o) e^{(-s_{cdom}(\lambda - \lambda_o))}, \quad (15)$$

where  $a_{cdom}^{CDOM}(\lambda)$  is the concentration-specific absorption of the CDOM-like tracer (Fig. 1c). The value for the spectral slope,  $s_{cdom}$ , is taken from the literature (Kitidis et al., 2006), and  $c_{cdom}(\lambda_o)$  is the CDOM-specific absorption at reference waveband,  $\lambda_o$ . Although CDOM is also strongly linked to terrestrial matter, we do not provide any land sources at present. We discuss the sensitivity of the function and parameters, and compare to previous model parameterizations in Sect. 5.

### 2.3.4 Phytoplankton

The absorption and scattering by phytoplankton is the net effect of each phytoplankton type resolved in our model,  $j$ :

$$a_{phy}(\lambda) = \sum_j a_{phy_j}^{chl}(\lambda) Chl_j, \quad (16)$$

$$b_{phy}(\lambda) = \sum_j b_{phy_j}^C(\lambda) M_{C_j} P_j, \quad (17)$$

$$b_{bphy}(\lambda) = \sum_j b_{bphy_j}^C(\lambda) M_{C_j} P_j. \quad (18)$$

The Chl *a*-specific absorption spectra  $a_{phy_j}^{chl}(\lambda)$  have units of  $\text{m}^2 (\text{mg Chl a})^{-1}$ . The scattering ( $b_{phy_j}^C(\lambda)$ ) and backscattering ( $b_{bphy_j}^C(\lambda)$ ) coefficients are assumed to be functions of phytoplankton biomass (e.g. Martinez-Vincent et al., 2013) and has units  $\text{m}^2 (\text{mol C})^{-1}$ . These spectra are specific to each of the phytoplankton types  $j$  (Fig. 1d–f) as taken from the literature (see discussion in Sect. 2.5 and Appendix Sect. C).  $M_{C_j}$  is the C : P ratio in each phytoplankton type (the base “currency” of the plankton in the equations is phosphorus; see further details in Appendix Sect. A).

## 2.4 Phytoplankton growth

Phytoplankton growth is modelled as a function of temperature, irradiance, and nutrients as in Hickman et al. (2010) following Geider et al. (1998). The growth rate is equal to the carbon-specific photosynthesis rate:

$$\mu_j = \mathcal{P}_{m_j}^C \left( 1 - \exp \left( \frac{-\Lambda_{E_j} \theta_j}{\mathcal{P}_{m_j}^C} \right) \right), \quad (19)$$

where  $\mathcal{P}_{m_j}^C$  is the light-saturated photosynthesis rate that is a function of temperature and nutrient limitation (see Appendix Sect. A), and  $\theta_j$  is the ratio of Chl *a* to C within each phytoplankton  $j$  (discussed further below). Furthermore,

$$\Lambda_{E_j} = \phi_{\max j} \sum_{\lambda=400}^{\lambda=700} a_{ps_j}^{chl}(\lambda) E_0(\lambda) \quad (20)$$

is the scalar irradiance absorbed by each phytoplankton,  $j$ , multiplied by  $\phi_{\max j}$ , the maximum quantum yield of carbon fixation.  $\Lambda_{E_j}$  is thus equivalent to the spectrally resolved product of irradiance and the initial slope of the Chl *a* normalized photosynthesis versus irradiance curve and has units of  $\text{mmol C (mg Chl a)}^{-1} \text{d}^{-1}$ .  $a_{ps_j}^{chl}(\lambda)$  is the Chl *a*-specific photosynthetic absorption spectra in each waveband  $\lambda$  (Fig. 1e), and  $E_0(\lambda)$  comes from the radiative transfer code (see Eq. 4).

Since some pigments are photoprotective, phytoplankton do not use all the light that they absorb for photosynthesis. Similar to Hickman et al. (2010) and Bisset et al. (1999), the total absorption spectra are therefore greater than the photosynthetic absorption spectra,  $a_{phy_j}^{chl} > a_{ps_j}^{chl}$  (Fig. 1d, e). (See



**Table 4.** Phytoplankton-specific parameter values. The abbreviations here refer to model analogues of other large eukaryotes (LgEuk), *Trichodesmium* (Tricho), coccolithophores (Coccol), unicellular diazotrophs (Uni Diaz), picoeukaryotes (SmEuk), *Synechococcus* (Syn) and high-light and low-light *Prochlorococcus* (HL/LL Pro)

Parameter	Diatom	LgEuk	Tricho	Coccol	Uni Diaz	SmEuk	Syn	HL/LL Pro
$P_{m_{\max j}}^C$	3.45	1.67	0.31	1.03	0.61	1.82	1.22	1.09
$M_{Si:P_j}$	16	0		0	0	0	0	0
$M_{N:P_j}$	16	16	40	16	40	16	16	16
$M_{Fe:P_j}$	1	1	4	1	4	1	1	1
$M_{C:P_j}$	120	120	120	120	120	120	120	120
$R_{rj}$	0	0	0	0.8	0	0	0	0
$\kappa_{po4j}$	0.0187	0.0069	0.0034	0.0046	0.0011	0.0018	0.0011	0.0004
$\kappa_{inj}$	0.300	0.110	0	0.074	0	0.029	0.018	0.007
$\kappa_{nh4j}$	0.150	0.055	0	0.037	0	0.015	0.090	0.035
$\kappa_{fej}$	0.0187	0.0069	0.0136	0.0046	0.0052	0.0018	0.0081	0.0004
$\kappa_{sij}$	0.300	0	0	0	0	0	0	0
$\phi_{\max j}$	40	40	40	40	40	40	40	40
$\theta_{\max j}$	0.3	0.2	0.2	0.2	0.2	0.2	0.2	0.2
$w_{pj}$	0.36	0.23	0.45	0.23	0.10	0.07	0.06	0.03
$\kappa_{inhb_j}$	0	0	0	0	0	0	0	0/0.9
$m_{pj}$	0.1	0.1	0.1	0.1	0.1	0.1	0.1	0.1
$\phi_{mp_{ij}}$	0.5	0.5	0.5	0.5	0.2	0.2	0.2	0.2
$\eta_{jk}, k = lg$	0.86	0.90	0.5	0.85	0.2	0.2	0.2	0.2
$\eta_{jk}, k = sm$	0.17	0.18	0.1	0.17	1.0	1.0	1.0	1.0

**Table 5.** Zooplankton/grazing-specific parameter description.

Parameter	Symbol	Units
Max. grazing rate	$g_{\max,jk}$	$d^{-1}$
DOM–POM partitioning	$\phi_{g_{ijk}}$	unitless
	$\phi_{mz_{ik}}$	unitless
Mortality at 30 °C	$m_{zk}$	$d^{-1}$
	$m_{z2k}$	$d^{-1} m^3 (mmolP)^{-1}$
Grazing efficiency	$\zeta_{jk}$	unitless
Grazing half-saturation	$\kappa_{pk}$	$mmolP m^{-3}$

discussion in Sect. 2.5.) We also allow for photoinhibition, as in Hickman et al. (2010), such that  $P_{mj}^C$  reduces above a critical value at high light (see Appendix Sect. A).

## 2.5 Plankton types

We resolve nine phytoplankton “functional” types: these include analogues of diatoms, other large eukaryotes, coccolithophores, picoeukaryotes, *Synechococcus*, high- and low-light *Prochlorococcus*, nitrogen-fixing *Trichodesmium*, and unicellular diazotrophs. These phytoplankton differ in their elemental composition (e.g. diatoms require silica), maximum growth rate, nutrient half-saturation constants, sinking rates, maximum Chl *a* : C, and palatability to grazers (see Tables 3 and 4).

Cell size governs many traits. Smaller phytoplankton have lower nutrient half-saturation constants and sink more slowly. The maximum growth rates are guided by observations, diatoms having the highest rates and *Prochlorococcus* having the lowest (see e.g. Irwin et al., 2006). The parameter values are within ranges found in the literature and previous ecosystem model (Dutkiewicz et al., 2012; Ward et al., 2013; Monteiro et al., 2010).

In this model we treat the phytoplankton light absorption and scattering explicitly (Sect. 2.3.4). The Chl *a*-specific absorption spectra  $a_{phyj}^{chl}(\lambda)$  (units,  $m^2 (mgChl a)^{-1}$ ) vary between functional group (Fig. 1d). These spectra were obtained from representative phytoplankton types in cultures grown at similar growth irradiance (see references in Appendix Sect. C). The spectra capture differences in pigment composition and other taxon-specific differences, including the “package effect” (Berner et al., 1989). For instance, the larger diatom has a flatter spectrum than the smaller phytoplankton (e.g. *Prochlorococcus*). Total light-scattering spectra ( $b_{phyj}^C$ , Fig. 1f) were also obtained from representative phytoplankton types in culture, as were the ratios of backscatter to total scatter for each phytoplankton ( $b_{bphyj}^C$ , units  $m^2 (molC)^{-1}$ ) (Stramski et al., 2001; Subramaniam et al., 1999).

Spectra for absorption by photosynthetic pigments ( $a_{psj}^{chl}$ , Fig. 1e) were derived using the pigment reconstruction technique (following Hickman et al., 2010; Babin et al., 1996). Light absorption spectra were reconstructed by scaling

**Table 6.** Zooplankton/grazing-specific parameter values.

Parameter	$k = \text{large}$	$k = \text{small}$
$g_{\max jk}$	$j = \text{large}, 1;$ $j = \text{small}, 0.1$	$j = \text{large}, 0.1;$ $j = \text{small}, 1.$
$\varphi_{g_{ijk}}$	0.7	0.2
$\varphi_{mz_{ik}}$	0.5	0.2
$m_{zk}$	0.067	0.067
$m_{z2k}$	22.4	22.4
$\zeta_{jk}$	$j = \text{large}, 0.85;$ $j = \text{small}, 0.95$	$j = \text{large}, 0.5;$ $j = \text{small}, 0.85$
$\kappa_{pk}$	0.027	0.027

the weight-specific absorption coefficients for Chl  $a$ ,  $b$ , and  $c$ ; photosynthetic carotenoids and non-photosynthetic carotenoids; phycoerythrobilin; and phycourobilin-rich phycoerythrins (Bidigare et al., 1990b) to obtain the lowest sum of residuals between reconstructed and observed spectra.  $a_{\text{ps}j}^{\text{chl}}$  was then calculated by adjusting the measured  $a_{\text{phy}j}^{\text{chl}}$  by the spectral ratio of the reconstructed spectra with and without non-photosynthetic pigments (Hickman et al., 2010).

We parameterize all phytoplankton to have the same maximum quantum yield of carbon fixation ( $\phi_{\max j}$ , units molC fixed per moles photons) and all but diatoms to have the same maximum Chl  $a$ :C ( $\theta_{\max j}$ , units mgChl  $a$  (mmolC) $^{-1}$ ) (MacIntyre et al., 2002). We parameterize low-light *Prochlorococcus* as being photoinhibited, as this is a distinct feature of the difference between high- and low-light strains (Moore and Chisholm, 1999; Hickman et al., 2010).

We resolve two zooplankton classes (large and small) that graze on the phytoplankton using a Holling III scheme (Holling, 1959). The large class preys preferentially on the diatoms, coccolithophores, and *Trichodesmium*, while the smaller class preys preferentially on the smaller phytoplankton. We additionally parameterize diatoms and coccolithophores (hard shells) and *Trichodesmium* (toxicity) as having lower palatability. Zooplankton grazing parameters are similar to those used in Prowe et al. (2012), which were determined from a mechanistic model of zooplankton feeding (see Table 6).

## 2.6 Enhancements and limitations of optics component

The inclusion of radiative transfer and spectral light, as well as capturing several important optical constituents, is a significant development in the model. However, this version of the model is not without limitations. One major, though currently necessary, simplification is to assume constant absorption and scattering spectra (Fig. 1) for each constituent. For instance, absorption spectra for phytoplankton types do in reality change based on shifts in Chl  $a$ :C (e.g. MacIntyre et al., 2002; Morel et al., 1993, 1995) as well as changes in ratios of photoprotective to photosynthesis pigments as a result

of light, temperature, and nutrient stress (e.g. Stramski et al., 2002). However, these changes are likely to be small compared to the differences already captured by the representative spectra and photoacclimation component, and there are not, as yet, enough systematic observations of all of these alterations to constrain model parameterizations. Additionally, the CDOM absorption spectrum has been observed to alter regionally (e.g. Kitidis et al., 2006; Twardowski et al., 2004; Bricaud et al., 2010), though as yet we feel it is premature to attempt to capture this variability in the model parameterizations.

Scattering, particularly by detrital particles, remains the least well developed aspect of the model. In particular, we neglect variations in detrital particle size distributions, which are likely to be important (Stramski et al., 2001). Additionally, the spectrum for  $b_{\text{det}}^{\text{part}}$  that we use (Stramski et al., 2001, Fig. 1b) makes the assumption of homogeneous spheres. However it is likely that differences in shapes and internal structure of the particles will be important for altering the spectral shape (Stramski et al., 2004). We also do not take into account inelastic scattering, which may be important for blue and green light in oligotrophic regions (e.g. Ge et al., 1993).

We additionally currently neglect other potentially important optical constituents such as minerals (e.g. Stramski et al., 2001), particulate inorganic carbon (e.g. Balch and Itgoff, 2009), colloids and bubbles (e.g. Stramski et al., 2004), and non-photosynthetic organisms including zooplankton, bacteria (e.g. Morel and Ahn, 1991), and viruses (e.g. Stramski et al., 2001). We felt that these are, as yet, not well enough constrained to include explicitly in the model.

The limitations list above should not, however, detract from the major enhancement to the model, and our assumptions are similar to those of other models (e.g. Fujii et al., 2007; Gregg and Casey, 2007). This new model provides a unique platform to examine global implication of optical properties to the phytoplankton ecosystem, feedbacks to the biogeochemistry, and links to satellite data that are not possible with limited observational data. Here we first validate the model in a standard “default” configuration. We then provide a series of studies exploring the significance of each of the optical constituents and our parameterization. Several studies in progress build on these results.

## 3 Default simulation and validation

We initialize the macronutrient fields (nitrate, phosphate, and silicic acid) from World Ocean Atlas (Garcia et al., 2006) climatologies and the iron from previous model output. We also use previous model output to provide distribution of the ammonium, nitrite, and dissolved and particulate matter. The total phytoplankton biomass is initialized from previous model output, divided equally between groups, except for the diazotrophs, which are initialized at a much lower value so as

not to flood the system with new nitrogen in the first few time steps. Zooplankton are similarly initialized with equal distribution in both groups.

The model time step is 3 h. We tested this against smaller time steps with almost identical results. We run the simulation forward for 10 years with a repeating generic “year” from the physical ECCO-GODAE products (Wunsch and Heimbach, 2007). Model results shown in this section are from the last year of the simulation. The phytoplankton establish a repeating pattern after about 3 years such that we can assume a “quasi-steady state” by year 10. A slow drift as deep water nutrient distributions adjust does not significantly change the results over the remaining time period.

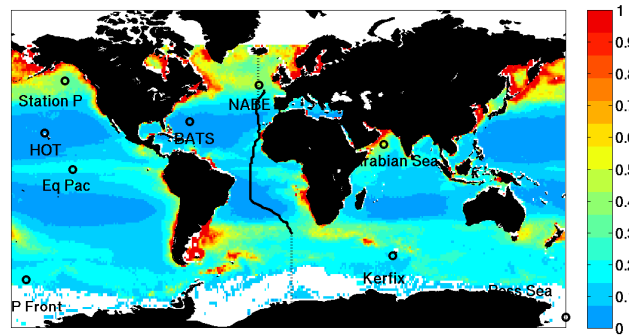
We evaluate the model results against a range of in situ observations and satellite-derived products. In particular, we focus on the unique data set including biogeochemical, ecological and (some previously unpublished) optical properties that were obtained as part of the AMT-15 cruise. Though there are other AMT cruises that include some similar and/or different combinations of optical data (e.g. AMT-19, Dall’Omo et al., 2012, Martinez-Vicente et al., 2013), we chose to look at only a single transect for clarity. In particular, the combination of data on spectral irradiance penetration,  $a_{\text{CDOM}}$ , and light absorption by phytoplankton was of particular use in model validation.

### 3.1 Atlantic Meridional Transect

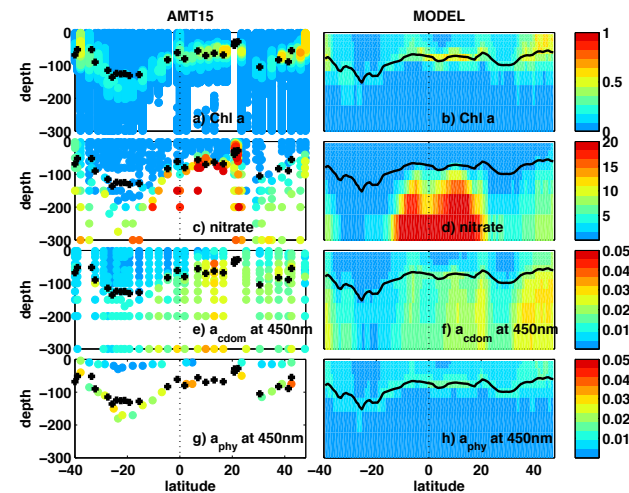
The model broadly reproduces the horizontal gradients at the surface but, importantly, also captures the subsurface Chl  $a$  maximum (Fig. 3a, b), and in particular its deepening in the subtropical gyres, especially in the South Atlantic. The model captures the depth of the nitricline across the transect (Fig. 3c, d), especially the deep section (200 m) in the South Atlantic gyres. The model does not adequately resolve the North Atlantic upwelling (a resolution issue in the physical model), and nitrate and Chl  $a$  are too low in this region. Additionally, the physical model has too strong upwelling just south of the Equator, leading to nitrate and Chl  $a$  being too high.

The model also captures observed variability in  $a_{\text{CDOM}}$  along the AMT-15 transect: low in the surface waters where CDOM is quickly bleached, and higher in deeper waters where CDOM accumulates. Values and regional patterns compare well between model and observations (Fig. 3e, f), except just south of the Equator, where Chl  $a$  and nutrient supply are also too high (as discussed above). Absorption by phytoplankton (Fig. 3g) was only measured at the surface and the subsurface Chl  $a$  maximum. The model captures the higher value near the subsurface Chl  $a$  maximum (Fig. 3h).

We have used the AMT-15 measured downwelling irradiance and upwelling zenith radiance together with the inverse-modelling procedure of Gordon and Boynton (1997, 1998) to estimate the total absorption and total backscattering in several wavelengths (Fig. 4a, c, e, g). We discuss this inversion

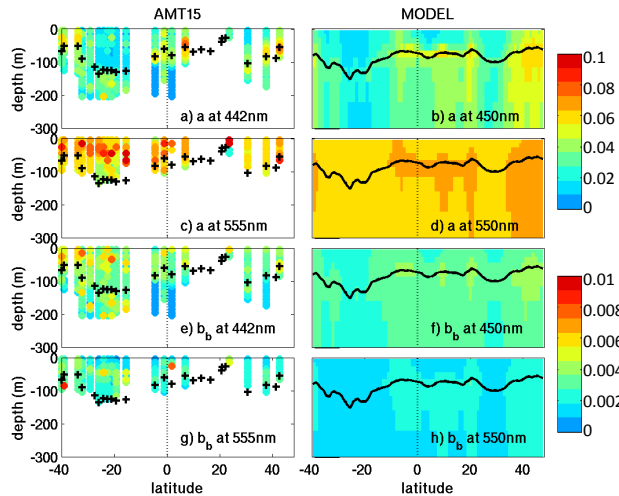


**Figure 2.** Satellite (MODIS)-derived Chl  $a$  ( $\text{mg Chl } a \text{ m}^{-3}$ ) overlain with the cruise track of the 15th Atlantic Meridional Transect (AMT-15) solid black line and 9 JGOFS time series site (black circles). We also show, with a dashed line, the extension to AMT-15, which is used in some transect figures to include model subpolar results.



**Figure 3.** Comparison of model output (right column, October mean) with data collected during AMT-15 (left column, collected from late September to late October): (a, b) Chl  $a$  ( $\text{mg Chl } a \text{ m}^{-3}$ ), (c, d) nitrate ( $\text{mmol N m}^{-3}$ ), (e, f) absorption by coloured dissolved matter ( $a_{\text{CDOM}}$ ) ( $\text{m}^{-1}$ ), and (g, h) absorption by phytoplankton ( $a_{\text{phy}}$ ) ( $\text{m}^{-1}$ ). The AMT-15 data are plotted as dots for each observation taken. Model data are presented across the whole transect. The black crosses indicate the depth where the total PAR is 1 % of the surface value in AMT-15. Model 1 % irradiance depth is shown as a black line. Transect location is shown in Fig. 2. (AMT-15 optical data – G. Moore, unpublished; CDOM – Stubbins et al., 2006).

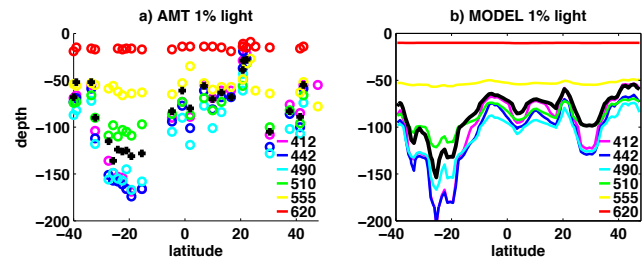
further in Appendix Sect. D. There is a large degree of uncertainty in this inversion process and additional noisiness provides several spurious high/low values that are not realistic. Given this caveat, we find that the model qualitatively captures (Fig. 4b, d, f, h) the magnitudes and the pattern of higher absorption/lower scattering at the higher wavebands.



**Figure 4.** Comparison of model output (right column, October mean) with data collected during AMT-15 (left column): (a) derived total absorption at 443 nm ( $\text{m}^{-1}$ ), (b) model total absorption at 450 nm ( $\text{m}^{-1}$ ), (c) derived total absorption at 555 nm ( $\text{m}^{-1}$ ), (d) model total absorption at 550 nm ( $\text{m}^{-1}$ ), (e) derived total backscattering at 443 nm ( $\text{m}^{-1}$ ), (f) model total backscattering at 450 nm ( $\text{m}^{-1}$ ), (g) derived total backscattering at 555 nm ( $\text{m}^{-1}$ ), and (h) model total backscattering at 550 nm ( $\text{m}^{-1}$ ). The derived properties were calculated with an inverse model of the downwelling and upwelling irradiance measured during AMT-15 (see text and Appendix Sect. D). 1% light level indicated with black lines/symbols. (AMT-15 optical data – G. Moore, unpublished).

Since the model realistically captures much of the variability in optical constituents it also accurately resolves the penetration of light through the water column (Fig. 5) as found in the AMT-15 data. We compare the depth of the 1% light level: the depth where the downwelling irradiance in each waveband is 1% of the surface value ( $E_{d_o}^{\text{below}} + E_{s_o}^{\text{below}}$ ). We find that the shortest wavebands (e.g. purple line and symbols in Fig. 5) reach deepest in the South Atlantic gyre, where concentrations of the optical constituents are lowest and less deep than medium wavebands (e.g. light- and dark-blue lines) in more equatorial regions. The penetration of blue wavebands leads to the very deep subsurface Chl *a* maximum and drawdown of nutrients at depth as observed in the AMT-15 transect and in the model. The 1% depths are too deep in the North Atlantic upwelling region, since we do not capture this feature in the physics.

The model captures intricate patterns of absorption and scattering that develop from the interplay of different optical constituents and suggests the importance of treating each constituent separately for reproducing the in situ light field. We explore this further in Sect. 5.



**Figure 5.** Comparison of data collected along AMT-15 (a) and model (October mean) (b); black symbols in (a) and black line in (b) indicate the depth of where the total irradiance is 1% of the surface value. Coloured lines/symbols indicate where the irradiance in each of several wavelengths is 1% of the surface values. Model results are interpolated to same wavelength as the AMT-15 data. (AMT-15 optical data – G. Moore, unpublished.)

### 3.2 Global results

That the model captures much of the Chl *a*, nutrient, and optical properties at basin scale and with depth as observed during AMT-15 is very encouraging. The model also captures many of the global features in Chl *a* (derived from MODIS satellite), primary production (derived using Behrenfeld and Falkowski, 1997), and macronutrients (from the World Ocean Atlas; Garcia et al., 2006), though with notable biases (Fig. 6). The broad-scale features of high nutrients, high Chl *a*, and high productivity in the high latitudes and equatorial regions as well as low nutrients and low Chl *a* in the subtropical gyres are resolved. We do not, however, capture coastal features as the physical model is too coarse to resolve the important mesoscale processes. This is also true in frontal zones (such as the western boundary currents) where primary production is too low.

Relative to the composite of iron data (Tagliabue et al., 2012), we also capture high iron in the Atlantic Ocean and lower iron over much of the Pacific (Fig. 6j, k). However, iron may be too low in the tropical South Pacific and Pacific equatorial regions. Here the model aeolian dust supply (based on Luo et al., 2008) may be too low; however the physical model also does not adequately resolve equatorial undercurrents, which are likely responsible for supplying sedimentary iron to this region (Radic et al., 2011; Slemmons et al., 2009). Since iron limitation is too strong in this region, productivity is too low and nitrate too high. The model also overestimates Chl *a* in the Southern Ocean and other high latitudes relative to the satellite product. However, the satellite Chl *a* algorithm has a factor of 2 range error (Campbell et al., 2002) and is especially problematic in the Southern Ocean (Szeto et al., 2011).

We find that the spatial standard deviation (between 0.85 and 1.15) and correlation (greater than 0.9) of the model vs. observed nutrients are encouraging (Fig. 7). Though we capture much of the spatial variability in the Chl *a*, the corre-

lations with satellite-derived products are not as good. The primary production is universally too low and too uniform relative to the satellite-derived product. However, we note that the satellite products of Chl *a* and primary production have large error margins associated with them that are not spatially homogeneous (Szeto et al., 2011).

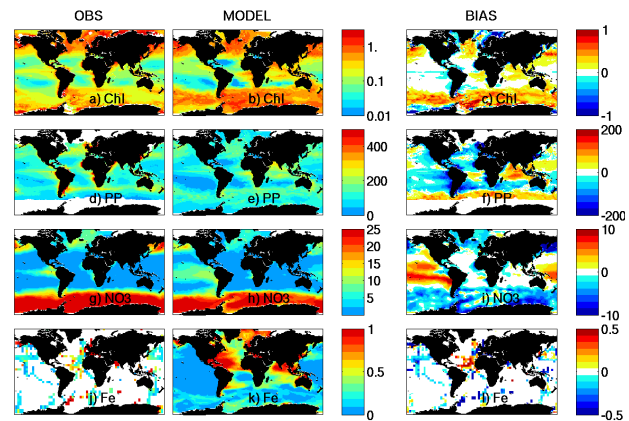
The model ecosystem has distinctive seasonal cycles (Fig. 8) that mostly match the observed satellite-derived and in situ Chl *a* at nine time series sites (locations shown in Fig. 2) collected as part of JGOFS (Kleypas and Doney, 2001). In many locations the model overestimates the satellite-derived peak of the bloom (consistent with annual mean Chl *a* being too high) but captures the non-bloom values more accurately. However, the in situ data broadly encompass the model values. We also capture the satellite-derived timing of the spring bloom, though notably do not get correct blooms at Station P, Kerfix, NABE.

A unique feature of this model is irradiance reflectance output, which we have converted to remotely sensed reflectance ( $R_{RS}$ ) using a fixed bidirectional function  $Q$  (see Sect. 2.2). We compare this model output to MODIS remotely sensed reflectance,  $R_{RS}(\lambda)$ . Despite the mismatch in wavelength and bandwidth and the oversimplification of a fixed  $Q$ , the model qualitatively captures the pattern of high reflectance in the subtropics relative to the higher productivity regions in low wavebands and the opposite pattern in higher wavebands. These initial results suggests that the model framework will be a useful laboratory for exploring satellite-like semi-analytical inversion algorithms (e.g. IOCCG report 5, 2006).

### 3.3 Phytoplankton biogeography

Eight of the nine phytoplankton functional groups that we resolve have distinct biogeography (Fig. 10). This biogeography encompasses both horizontal and vertical patterns of phytoplankton biomass. The large eukaryote group does not survive in this model as it was given no specific trade-off. It was large (low nutrient affinity) and had a low growth rate (typical of dinoflagellates).

We compare simulated biomass of the picophytoplankton to observations from AMT-15 (Fig. 11). AMT-15 cell counts were measured by analytical flow cytometry following methods of Heywood et al. (2006) and converted to biomass using constant factors (Zubkov et al., 1998) for comparison purposes. The model captures the smallest autotrophs, *Prochlorococcus*, as having significant abundances through the subtropics and tropic; *Synechococcus* was more abundant at the northern poleward fringe of the subtropics, and picoeukaryotes were more ubiquitous and more dominant in the subsurface Chl *a* maximum. In the 20 to 5° S region the model nutrient source is too high (discussed above) and *Synechococcus* analogues unrealistically dominate instead in the model. The model distribution of large phytoplankton biomass (e.g. diatoms, coccolithophores) compared well to

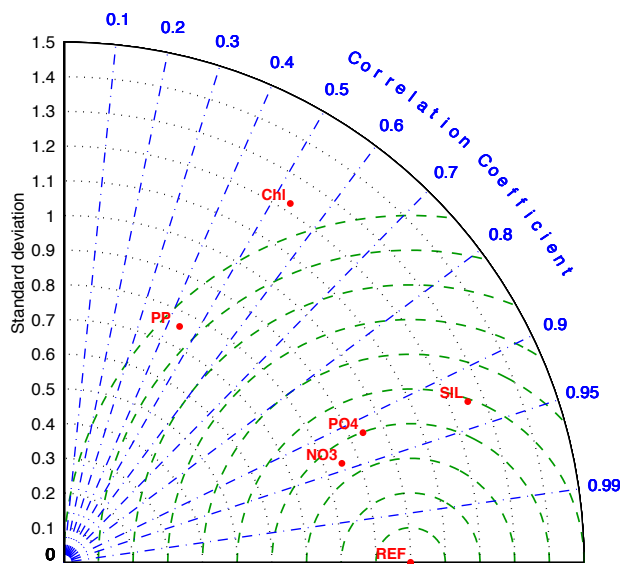


**Figure 6.** Model- and satellite-derived products and climatologies of in situ measurements for annual mean and biases: (a) satellite-derived (MODIS) Chl *a* ( $\text{mgChl a m}^{-3}$ ), (b) modelled Chl *a* (mean 0–50 m,  $\text{mgChl a m}^{-3}$ ), (c) model bias of Chl *a* (model–observations), (d) satellite-derived primary production ( $\text{gC m}^{-2} \text{yr}^{-1}$ ) (Behrenfeld and Falkowski, 1997), (e) modelled primary production (column integrated,  $\text{gC m}^{-2} \text{yr}^{-1}$ ), (f) model bias of primary production, (g) World Ocean Atlas nitrate (mean 0–50 m,  $\text{mmol m}^{-3}$ ) (Garcia et al., 2006), (h) modelled nitrate (mean 0–50 m,  $\text{mmol m}^{-3}$ ), (i) model bias of nitrate; (j) compiled iron observations (composite 0–50 m, nM) (Tagliabue et al., 2012), (k) modelled iron (mean 0–50 m, nM), and (l) model bias in iron.

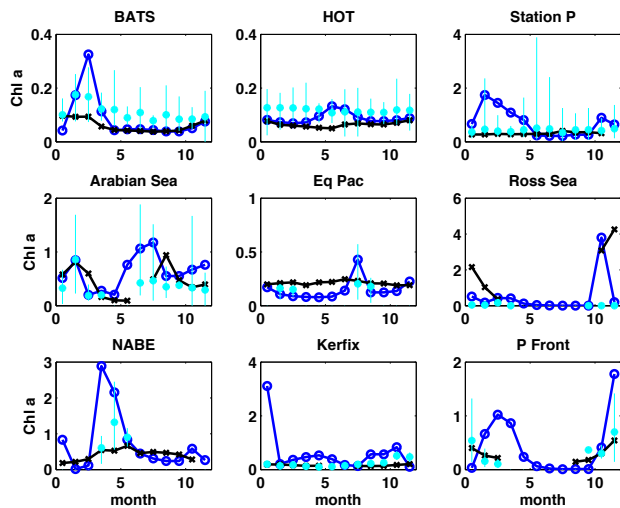
observations made along other AMT cruises (Tarran et al., 2006; Cermeño et al., 2008).

The MAREDAT (MARine Ecosystem DATA; Buitenhuis et al., 2013) compilation provides a comprehensive, though still sparse, climatological distribution of several plankton functional groups. Here we re-grid the MAREDAT compilation onto a 5° grid with all observations between 0 and 50 m averaged together and compare this to the model output (Fig. 12). For the model results we sum the *Prochlorococcus*, *Synechococcus*, and picoeukaryote groups to compare to the observations of picophytoplankton. The model captures the ubiquitous nature of the picophytoplankton, the lack of coccolithophores in the subtropical gyres and polar extent of the Southern Ocean, the high diatom values in the high latitudes and in the equatorial upwelling regions, and the low abundance (or lack) of diazotrophs in the southern Pacific gyres. However, model coccolithophore biomass is in general too high and diazotroph biomass has a peak too far south in the North Atlantic. Though the MAREDAT compilation includes micro-, meso-, and macrozooplankton, data on the former and the latter are very sparse. Since we do not have direct analogues in the model, we show here only the mesozooplankton biomass observations (Fig. 12i). The model captures the patterns of high and low values of zooplankton biomass.

Given the sparsity of in situ measurements of phytoplankton types, it is natural to attempt to capture aspects of bio-



**Figure 7.** Taylor diagram showing correlation and normalized SD between annual mean modelled Chl *a*, primary production (PP), and macronutrients (NO<sub>3</sub>, PO<sub>4</sub>, and silicic acid (SIL)). Satellite-derived products (Chl *a* from MODIS and primary production following Behrenfeld and Falkowski, 1997) and World Ocean Atlas (Garcia et al., 2006) nutrients. A perfect match would be a correlation of 1 (i.e. on the *x* axis) and normalized SD of 1: this point is shown as “REF”.



**Figure 8.** Comparison of monthly model Chl *a* (mgChl *a* m<sup>-3</sup>) (dark blue) at nine sites (JGOFS data – Kleypas and Doney, 2001) with satellite (MODIS)-derived Chl *a* (mgChl *a* m<sup>-3</sup>) (black) and in situ (light blue) data. In situ data show monthly mean of 0–15 m, with symbol and line indicating range of values. Locations of sites are shown in Fig. 1.

geography from space (IOCCG report 15, 2014; IOCCG report 9, 2009). Here we compare the model output to the PHYSAT product (Alvain et al., 2008), which empirically relates optical properties to specific (probably dominant) phytoplankton types (Fig. 13a, c) for January and July and compare to model dominant types (Fig. 13). In both the model and PHYSAT we find that cyanobacteria dominate the tropics and subtropics, diatoms play a substantial role in the summer biomass, and a combination of coccolithophores and picoeukaryotes dominate in the mid-latitudes.

These global “observations” contain many uncertainties stemming mainly from the scarcity of in situ data, but the model does not disagree with their findings. The model captures key patterns of observed optical and ecological properties. It provides a tool to explore aspects of the ocean biogeochemistry and ecosystem that are not possible with models that do not explicitly resolve radiative transfer, spectral irradiance, and resolution of the different water optical properties. In the next section we explore the role of the various water constituents on the irradiance spectrum and how they impact biogeochemistry and ecosystem structures.

#### 4 Sensitivity experiments: value of added model complexity.

We conduct two sensitivity experiments to highlight the importance of the extra levels of complexity of this new version of the model. In the first experiment (designated EXP-V0) the biogeochemistry and ecosystem are the same as in the default experiment described above (designated EXP0) but there is only a single band of irradiation (400–700 nm, summed over the original 25 nm, so that total PAR is conserved); attenuation ( $c_{\text{tot}}$ ) of PAR is a function of only absorption by water molecules and Chl *a* summed over all phytoplankton types:  $c_{\text{tot}} = a_{\text{wo}} + a_{\text{chlo}} \text{Chl } a_{\text{tot}}$ , where  $a_{\text{wo}} = 0.04 \text{ m}^{-1}$  and  $a_{\text{chlo}} = 0.04 \text{ m}^2 (\text{mg Chl } a)^{-1}$ . There is no explicit account taken for optical role of CDOM or detritus (though the value chosen for  $a_{\text{chlo}}$  does implicitly include their role). Similar parameterizations have been used in previous versions of our model (e.g. Dutkiewicz et al., 2014) and are also common in many other biogeochemical models.

The results from EXP-V0 (Fig. 14a) reveal a much more latitudinally uniform penetration of light. In particular the subsurface Chl *a* maximum in the subtropical gyre is too shallow relative to the default experiment (EXP0, Fig. 14c) and observations (Fig. 3a).

In experiment EXP-V1 we include all the optical constituents explicitly (as in EXP0), though with only a single band of PAR (as in EXP-V0). We assume the absorption and scattering coefficients for 500 nm in this experiment. This experiment (Fig. 14b) reveals a substantially more realistic variability in the depth of the subsurface Chl *a* maximum and penetration of PAR. The addition of spectral light leads to even deeper penetration of PAR in the subtropical gyres

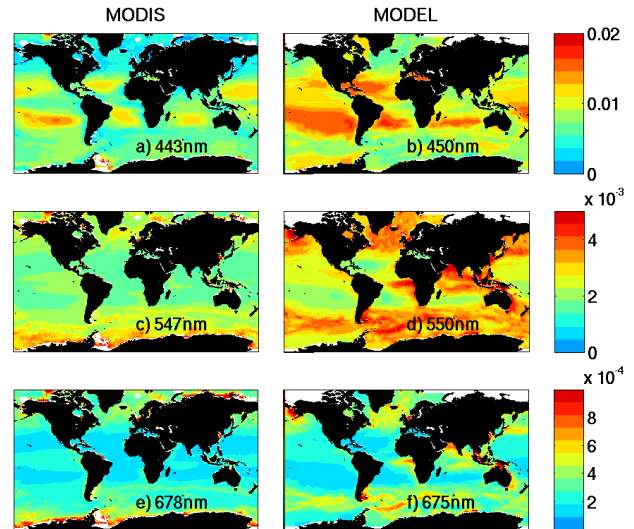
(compare to default experiment, EXP0, Fig. 14c): deepest penetrating light is in the blue/green range, such that an average absorption across one waveband will not capture these differences.

These sensitivity experiments suggest that explicitly capturing regional changes in all optical constituents is essential for the realistic variations in the depth of light penetration. Resolving the light spectrum further enhances the realism of the results. The addition of the radiative transfer code is essential for obtaining upwelling irradiance that can link to satellite products.

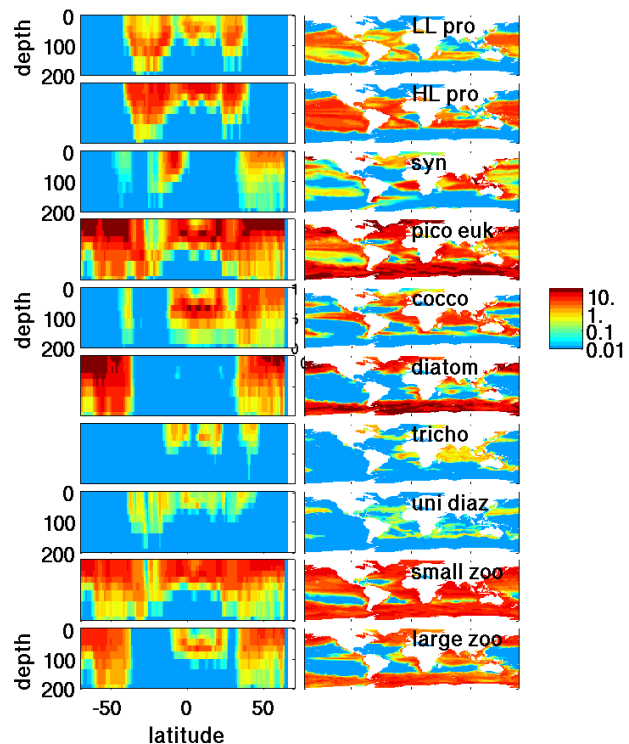
## 5 Sensitivity experiments: role of optical constituents

Optical constituents play varying roles in their effect on irradiance attenuation (absorption and scattering). These roles have long been a topic of interest; however many studies have included only limited observations and been of highly localized in character (e.g. Jerlov, 1953; Chang and Dickey, 1999) but have nonetheless recognized that they vary regionally (e.g. Barnard et al., 1998; Simeon et al., 2003). Targeted cruises have also provided larger-scale observations indicating a wide range of values for each constituent and altering importance in different regions (e.g. BIOSOPE; Bricaud et al., 2010). Additionally, several attempts have been made to construct algorithms to determine the relative contributions from more easily measured quantities, including those from satellites (e.g. Maritorena et al., 2002; Lee et al., 2002, 2007; Ciotti and Bricaud, 2006; Werdell et al., 2013; Zheng and Stramski, 2013). Our model provides a unique global three-dimensional perspective. Here our results focus on an (extended) AMT transect (Figs. 15 and 16); however, they are also consistent with observations in other regions (e.g. Bricaud et al., 2010).

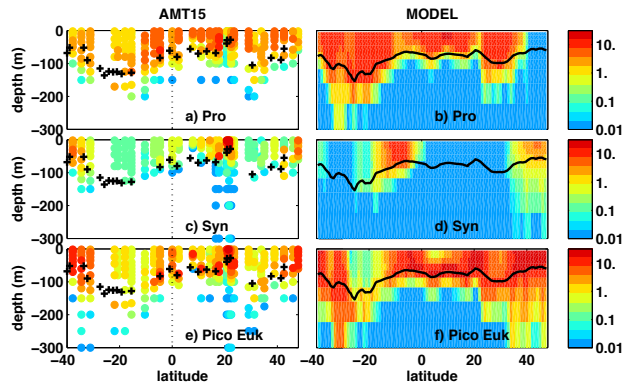
Absorption by water molecules is most important at longer wavebands (Pope and Fry, 1997) but still has an impact at shorter wavebands (Fig. 15a, b, i, j). It is relatively more important in lower productive waters (e.g. South Atlantic gyre) because the concentrations of other constituents are relatively low. Absorption by detrital matter plays a role, especially near the 1% depth in highly productive regions and at shorter wavebands (Fig. 15c, d, i, j) as suggested by observations (e.g. Jerlov, 1953). Absorption by phytoplankton plays a significant role where Chl *a* is highest (e.g. the subsurface Chl *a* maximum, as found in observations; e.g. Chang and Dickey, 1999) at wavelengths less than 550 nm, and little role at longer wavelengths (Fig. 15g, h, i, j; see also Fig. 1). Absorption by CDOM at short wavebands is important (as seen in observations; e.g. Jerlov, 1953) in most regions, particularly where productivity is high where it is the dominant absorber. It also has, relative to other constituents, a large role at depth (as seen in observations; e.g. Simeon et al., 2003; Bricaud et al., 2010; Nelson and Siegel, 2013). At long wavebands, CDOM plays very little role. Scattering by



**Figure 9.** Comparison of model with satellite (MODIS)-derived remotely sensed reflectance,  $R_{RS}$  ( $\text{sr}^{-1}$ ): (a) MODIS at 443 nm, (b) model at 450 nm, (c) MODIS at 547 nm, (d) model at 550 nm, (e) MODIS at 678 nm, and (f) model at 675 nm. Note that the wavebands do not exactly match between model and MODIS output.



**Figure 10.** Model annual mean biomass ( $\text{mg C m}^{-3}$ ) of the plankton types for AMT-15 transect extended north and south to show the subpolar regions (left) and 0–50 m average (right). Shown are the eight surviving phytoplankton types and the two zooplankton types.



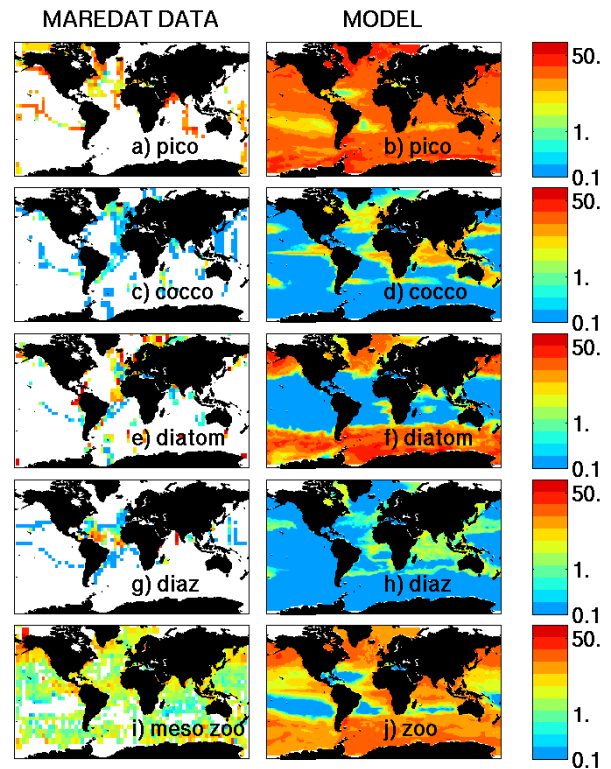
**Figure 11.** Comparison of model output (October mean) with data collected along AMT-15: (a, b) *Prochlorococcus*, (c, d) *Synechococcus*, and (e, f) picoeukaryotes. Results are shown in  $\text{mg C m}^{-3}$ ; AMT-15 observations were converted from cell count to biomass (Zubkov et al., 1998). AMT-15 data from Heywood et al. (2006).

phytoplankton is most important at shallower depths, while scattering by detrital matter is dominant deeper at all wavelengths (Fig. 16).

We perform a series of sensitivity experiments to explore the role of each constituent in setting the irradiance field in the ocean and on surface reflectance, and to see how changes to these constituents feed back to the ecosystem and biogeochemistry. The range of values for these experiments is designed to cover and go beyond the natural range of the absorption and scattering by the water constituents. We additionally explore how different assumptions and parameterizations for the optical constituents affect the simulation results.

## 5.1 Detrital matter

Observations have determined that detrital matter does play a role in light attenuation, though with varying regional importance (e.g. Jerlov, 1953; Bricaud et al., 2010). We conduct several sensitivity studies to explore the relative importance of  $a_{\text{det}}$  and  $b_{\text{det}}$  (Fig. 17) globally in the model. We run each experiment from the same initial conditions as the “default” (EXP0) discussed in Sect. 3, and present results for the final year after 10 years of integration. We artificially alter  $a_{\text{det}}^{\text{part}}(\lambda)$  or  $b_{\text{det}}^{\text{part}}(\lambda)$  as noted below, such that  $a_{\text{det}}$  and  $b_{\text{det}}$  are manipulated. The experiments include the feedbacks to nutrients and productivity. In experiment EXP-D5 we explore a different parameterization for  $a_{\text{det}}(\lambda)$  that was used in Fujii et al. (2007).



**Figure 12.** Comparison of model plankton-type biomass ( $\text{mg C m}^{-3}$ ) with compilation of biomass from MAREDAT (picophytoplankton – Buitenhuis et al., 2012; coccolithophores – O’Brien et al., 2013; diatoms – Leblanc et al., 2012; diazotrophs – Luo et al., 2012; mesozooplankton – Moriarty and O’Brien, 2013). Note that model output is annual average from 0 to 50 m; right column is compilation of all MAREDAT data in  $5^\circ$  bins between 0 and 50 m and does not represent an annual average.

1. EXP0: this is the default run where

$$a_{\text{det}}(\lambda) = a_{\text{det}}^{\text{part}}(\lambda) \frac{\text{POC}}{p_{\text{part}}},$$

$$b_{\text{det}}(\lambda) = b_{\text{det}}^{\text{part}}(\lambda) \frac{\text{POC}}{p_{\text{part}}},$$

$$b_{\text{dbet}}(\lambda) = b_{\text{dbet}}^{\text{part}}(\lambda) \frac{\text{POC}}{p_{\text{part}}}.$$

2. EXP-D1: we set  $a_{\text{det}}^{\text{part}}(\lambda) = 0$ .
3. EXP-D2: we set  $a_{\text{det}}^{\text{part}}(\lambda)$  artificially to 4 times the values used in EXP0.
4. EXP-D3: we set  $b_{\text{det}}^{\text{part}}(\lambda) = 0$ .
5. EXP-D4: we set  $b_{\text{det}}^{\text{part}}(\lambda)$  4 times the value EXP0.



6. EXP-D5: as in Fujii et al. (2007) we represent

$$a_{\text{det}}(\lambda) = a_{\text{det}}^{\text{POC}}(\lambda_o)\text{POC}e^{(-0.01(\lambda-\lambda_o))},$$

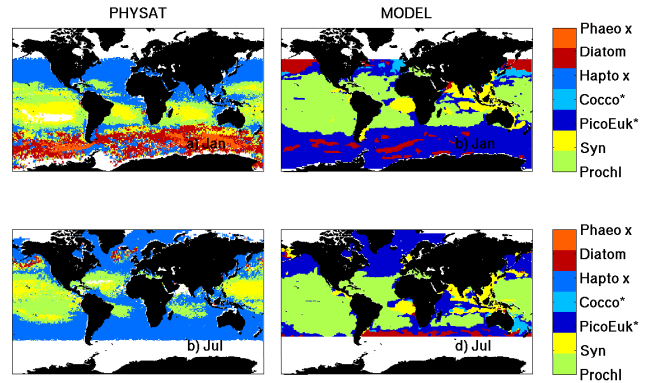
where  $a_{\text{det}}^{\text{POC}} = 0.1 \text{ m}^2 \text{ g C}^{-1}$  (Fujii et al., 2007) and  $\lambda_o = 450 \text{ nm}$ .

Removing the detrital absorption (EXP-D1) leads to bluer wavebands reaching to greater depth (Fig. 17a). This favours phytoplankton, at least in the subtropics, which absorb more efficiently in the blue part of the spectrum (i.e. *Prochlorococcus*, Fig. 17c) as anticipated from laboratory studies (e.g. Moore et al., 1995). On the other hand, having stronger detrital absorption (EXP-D2) leads to shallower 1 % light levels for the blue wavebands. The corresponding red-shifted light favours *Synechococcus*, which absorbs more efficiently in this part of the spectrum. With less irradiance absorbed in EXP-D1, we find a higher percentage is reflected at the shorter wavebands (Fig. 17d). Similarly as more irradiance is absorbed (EXP-D2), there is a reduction in the reflectance.

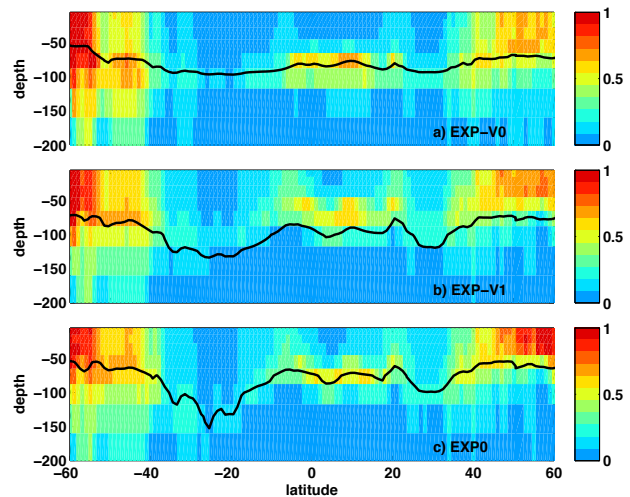
We observe distinct biogeochemical feedbacks. With lower absorption by detritus (EXP-D1) the depth integrated phytoplankton biomass in the high latitudes increases (Fig. 17b), leading to higher nutrient utilization in these locations. Thus the transport of nutrients to the lower latitudes is reduced (see e.g. Sarmiento et al., 2004; Dutkiewicz et al., 2005), reducing biomass in those locations. This will even further increase the 1 % light depth for the blue wavebands and consequently favour *Prochlorococcus* more. The lower absorption by detritus therefore leads to expansion of the oligotrophic subtropical gyres. Conversely, with more absorption (EXP-D2), we find lower depth-integrated productivity in the high latitudes, higher nutrient supply to subtropics, reduced oligotrophic regions, and favouring of *Synechococcus*. This feedback between the light field and the biogeochemistry can only be captured by a fully three-dimensional coupled ecosystem–radiative transfer model.

The main attenuation of light with depth is through absorption, and as such alterations to the backscattering by detrital matter (EXP-D3 and EXP-D4) have little effect on the irradiance fields at depth (Fig. 17a) and thus there is little change in the dominant functional type (Fig. 17c). However scattering has a major impact on the amount and quality of the upwelling light, and as such the changes to the irradiance reflectance are large (Fig. 17d).

In EXP0,  $a_{\text{det}}$  is calculated relative to number of detrital particles, whereas in EXP-D5 we parameterized it relative to particulate organic carbon (POC) concentrations (following Fujii et al., 2007). We find very similar patterns and magnitudes of  $a_{\text{det}}(450)$  using these two methods. A slight difference in magnitude can be attributed to the values chosen for  $a_{\text{det}}^{\text{POC}}$  and  $p_{\text{part}}$  in the respective parameterizations. There is consequently little difference in biomass, phytoplankton distributions, and reflectance between the two experiments.



**Figure 13.** Comparison of model phytoplankton dominate type with dominant type found from PHYSAT (Alvain et al., 2008) satellite-derived product for (a, b) January and (c, d) July. Note that haptophytes (Hapto) and *Phaeocystis* (Phae) are not specifically resolved in the model and so are only shown in the PHYSAT plots. Coccolithophores (Cocco), a subset of haptophytes, and picoeukaryotes (PicoEuk) are not resolved by the PHYSAT algorithm and so are only shown in the model results. “Syn” refers to *Synechococcus* and “Prochl” to *Prochlorococcus*.



**Figure 14.** Sensitivity experiments examining value of increased optical complexity in model. Chl  $a$  ( $\text{mg C m}^{-3}$ ) along the extended AMT-15 transect (see Fig. 2) for (a) EXP-V0 with no radiative transfer, single waveband of PAR (400–700 nm), no inclusion of optical effects of CDOM or detritus, and no optical differences between phytoplankton. (b) EXP-V1 with radiative transfer and explicit optical properties for CDOM and detritus but only one waveband (400–700 nm) and no optical differences between phytoplankton. (c) EXP0, the default experiment. Model 1 % irradiance depth is shown as a black line.

## 5.2 Coloured dissolved organic matter

CDOM and its contribution to light absorption are observed to vary in different regions of the ocean (e.g. Jerlov, 1953; Bricaud, 1981; Nelson and Seigel, 2013, Morel et al., 2010),

and many studies have attempted to empirically link  $a_{\text{cdom}}$  to other more easily measured quantities such as Chl  $a$  (e.g. Morel, 2009). However these studies are still regional or include only sparse data. We conduct a series of sensitivity experiments that test assumptions and importance of  $a_{\text{cdom}}$  globally and its feedback to the biogeochemistry. In two experiments (EXP-C1) and (EXP-C2) we assume no and significantly more absorption by CDOM, respectively. In additional sensitivity experiments (EXP-C3, EXP-C4, and EXP-C6) we explore the consequences of different parameterization of  $a_{\text{cdom}}$  as used in previous model studies (e.g. Greg and Casey, 2009; Mouw et al., 2012; Fujii et al., 2007; Hickman et al., 2010).

In all experiments,  $a_{\text{cdom}}(\lambda)$  is an exponential function with wavelength:

$$a_{\text{cdom}} = \chi_{\text{cdom}} e^{(-s_{\text{cdom}}(\lambda - \lambda_o))}.$$

In the series of experiments we make different assumptions on  $\chi_{\text{cdom}}$ :

1. EXP0:  $\chi_{\text{cdom}} = c_{\text{cdom}}(\lambda_o)\text{CDOM}$   
This is our default experiment detailed in previous sections.
2. EXP0-C1:  $\chi_{\text{cdom}} = 0$   
This experiment artificially assumes that there is no  $a_{\text{cdom}}$ .
3. EXP-C2:  $\chi_{\text{cdom}} = 4 \cdot c_{\text{cdom}}(\lambda_o)\text{CDOM}$   
This experiment is the same as the default (EXP0) but with CDOM artificially able to absorb 4 times as much light in each waveband.
4. EXP-C3:  $\chi_{\text{cdom}} = c_{\text{chl}}(a_w(\lambda_o) + \sum_j a_{\text{phy}j}^{\text{chl}}(\lambda_o)\text{Chl}_j)$   
Studies (e.g. Morel, 2009) have noted an empirical relationship between mean Chl  $a$  and  $a_{\text{cdom}}$ . But regionally there is a large variation in the ratio of Chl  $a$  and  $a_{\text{cdom}}$  (e.g. Bricaud et al., 1981; Kitidis et al., 2006; Morel et al., 2010). Here, as is done in Gregg and Casey (2007), we assume that  $a_{\text{cdom}}$  is a function of Chl  $a$ , and  $c_{\text{chl}} = 0.8$  (unitless) to match the magnitudes of EXP0.
5. EXP-C4:  $\chi_{\text{cdom}} = c_{\text{cdom}}f_{\text{cdom}}\text{DOM}$   
Since CDOM is part of the DOM pool, a previous model-based study (Mouw et al., 2012) assumed that some portion of the DOM pool ( $f_{\text{cdom}}$ ) is CDOM. Here we assume  $c_{\text{dom}} = 0.00508 \text{ m}^2 \text{ mg}^{-1}$  and  $f_{\text{dom}} = 0.0323$  following Bisset et al. (1999).

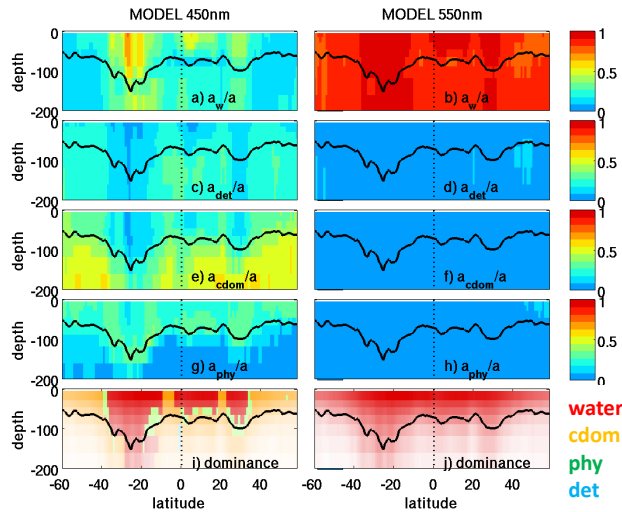
#### 6. EXP-C5: $\chi_{\text{cdom}} = 0.016 \text{ (m}^{-1}\text{)}$

Other studies (e.g. Fujii et al., 2007; Hickman et al., 2010) have assumed a uniform  $a_{\text{CDOM}}$  at each wavelength. For specific regions of the ocean (e.g. clear subtropical water; Hickman et al., 2010) or for regional studies this may be appropriate. Here for comparison we use  $\chi_{\text{cdom}} = 0.016 \text{ (m}^{-1}\text{)}$  as in Fujii et al. (2007).

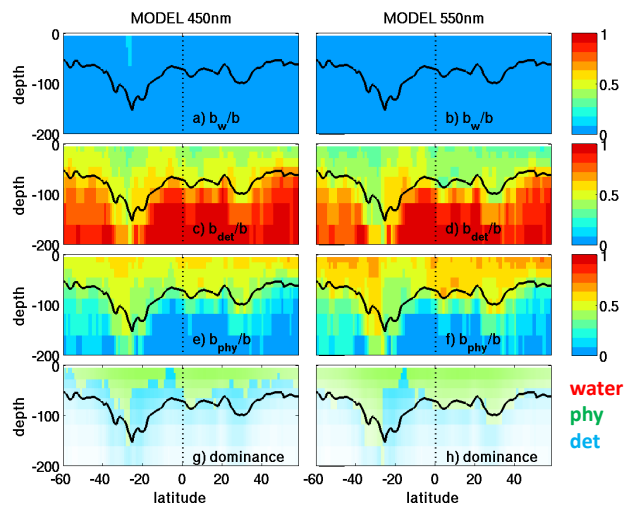
Community structure shifts significantly in response to the amount of irradiance that the CDOM absorbs (Fig. 18c). No CDOM absorption (EXP0-C1) favours bluer-adapted *Prochlorococcus* and high absorption (EXP0-C2) leads to more *Synechococcus*. There is also similar impact on the biogeochemistry and shifting boundaries of the oligotrophic subtropical gyres as in the detrital experiments (Fig. 18b). The model experiments thus reveal a potentially important role for CDOM in setting phytoplankton community structure via alteration of the visible light spectrum, building on previous studies (e.g. Arrigo and Brown, 1996). The amount of absorption by CDOM impacts the reflectance, again similar to the results seen with detrital absorption (Fig. 18d).

The three alternative parameterizations of  $\chi_{\text{cdom}}$  (EXP-C3, EXP-C4, and EXP-C5) lead to very different  $a_{\text{cdom}}$  fields (Fig. 18a). There are consequently shifts in the light fields and penetration depths of different wavebands, and corresponding regional shifts in the dominant functional type. In the parameterizations that tie  $\chi_{\text{cdom}}$  to either Chl  $a$  (EXP-C3) or DOM (EXP-C4),  $a_{\text{cdom}}$  is almost non-existent below the 1% light level (Fig. 18), at odds with observations (e.g. Simeon et al., 2003; Bricaud et al., 2010). Above the 1% light level the patterns of  $a_{\text{cdom}}$  are relatively realistic in these experiments, with higher  $a_{\text{cdom}}$  in productive regions and lower in less productive regions. However, there are significant differences to the default run and dominant functional types are altered (Fig. 18c). The uniform  $a_{\text{cdom}}$  simulation (EXP-C5) has a more uniform 1% light depth along the transect, reflecting the importance of CDOM for spatial variability in the depth of the euphotic zone. Since alterations to  $a_{\text{cdom}}$  significantly affect the irradiance propagation and hence changes the upwelling light, the impact of CDOM on the reflectance is important and all experiments show a strong response (Fig. 18d).

These experiments illustrate that the parameterization of CDOM has a very significant impact on community structure and reflectance and suggest that it is crucial to explicitly resolve CDOM in models and learn more about its variability in the ocean (Morel et al., 2010; Nelson and Siegel, 2013).



**Figure 15.** Model output along extended AMT-15 transect (annual mean) of (a–h) ratio of optical constituents contribution to total absorption: (a) water molecules,  $a_w/a$  at 450 nm; (b)  $a_w/a$  at 550 nm; (c) detrital matter,  $a_{det}/a$  at 450 nm; (d)  $a_{det}/a$  at 550 nm; (e) CDOM,  $a_{cdom}/a$  at 450 nm; (f)  $a_{cdom}/a$  at 550 nm; (g) total phytoplankton,  $a_{phy}/a$  at 450 nm; and (h)  $a_{phy}/a$  at 550 nm. Dominant absorption constituent is shown in (i) for 450 nm and (j) for 550 nm: blue,  $a_{det}$ ; green,  $a_{phy}$ ; orange,  $a_{cdom}$ ; red,  $a_w$ . In (i) and (j) the opacity is scaled by the log of the total PAR.



**Figure 16.** Model output along extended AMT-15 transect (annual mean) of (a–f) ratio of optical constituents contribution to total scattering: (a) water molecules,  $b_w/b$  at 450 nm; (b)  $b_w/b$  at 550 nm; (c) detrital matter,  $b_{det}/b$  at 450 nm; (d)  $b_{det}/b$  at 550 nm; (e) total phytoplankton,  $b_{phy}/b$  at 450 nm; and (f)  $b_{phy}/b$  at 550 nm. Dominant scattering constituent is shown in (g) for 450 nm and (h) for 550 nm: blue =  $b_{det}$ ; green =  $b_{phy}$ . In (g) and (h) opacity is scaled by the log of the total PAR.

### 5.3 Phytoplankton

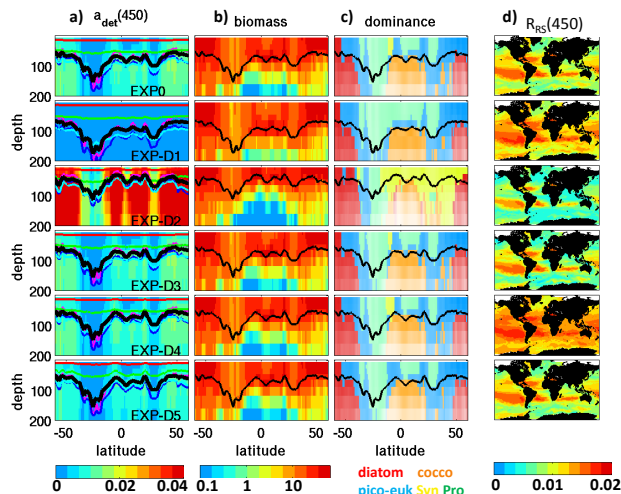
Idealized experiments were also conducted to explore the sensitivity due to phytoplankton absorption and scattering (Fig. 19). We artificially manipulate  $a_{phyj}^{chl}(\lambda)$  and  $b_{phyj}^C$ , affecting  $a_{phy}$  and  $b_{phy}$ .

1. EXP0: this is the default run, with each phytoplankton type having a specific absorption and scattering spectrum (Fig. 1d, e, f).
2. EXP-P1: we artificially set  $a_{phyj}^{chl}(\lambda) = 0$  for irradiance attenuation process, but still assume that phytoplankton growth depends on light as in EXP0. This is a highly hypothetical experiment.
3. EXP-P2: we artificially set  $a_{phyj}^{chl}(\lambda)$  to 4 times that of EXP0 for irradiance attenuation process, but still assume that phytoplankton growth depends on light as in EXP0. This is therefore also a highly hypothetical experiment.
4. EXP-P3: we set  $b_{phyj}^C = 0$ .
5. EXP-P4: we assume all phytoplankton have the same absorption properties (the mean, black lines, in Fig. 1d, e) for both  $a_{phyj}^{chl}(\lambda)$  and  $a_{psj}^{chl}(\lambda)$ .
6. EXP-P5: we assume all phytoplankton types have the same scattering and backscattering properties (the mean, black line, in Fig. 1f).

Altering the absorption by phytoplankton (EXP-P1 and EXP-P2) has a similar impact to altering CDOM or detritus (Fig. 19). There are similar changes to the irradiance field, dominant functional type, and reflectance with consequent feedbacks to the biogeochemistry.

As discussed above, the main attenuation of light is through absorption, and thus when we assume no scattering by phytoplankton (EXP-P3) there is almost no change in dominant functional type. However, since scattering does substantially affect the upwelling light, there is some (though small) change in reflectance compared to the default run (EXP0). An experiment with 4 times  $b_{phy}$  has similar results (not shown here).

In EXP-P4 and EXP-P5 we explore the importance of the phytoplankton type-specific absorption and scattering spectra in setting their biogeography and biogeochemical consequences. Total  $a_{phy}$ , the irradiance field, and light penetration depths of each waveband are altered when we assume a mean absorption for all phytoplankton (EXP-P4). Total  $a_{phy}$  is generally increased in the high latitudes and decreased at low latitudes (Fig. 19a). This occurs because diatoms (which dominate the high latitudes) have lower absorption per unit Chl  $a$  than the mean spectrum (see Fig. 1e), and picophytoplankton (which dominate the lower latitudes) have a higher absorption than the mean. Community structure is also altered



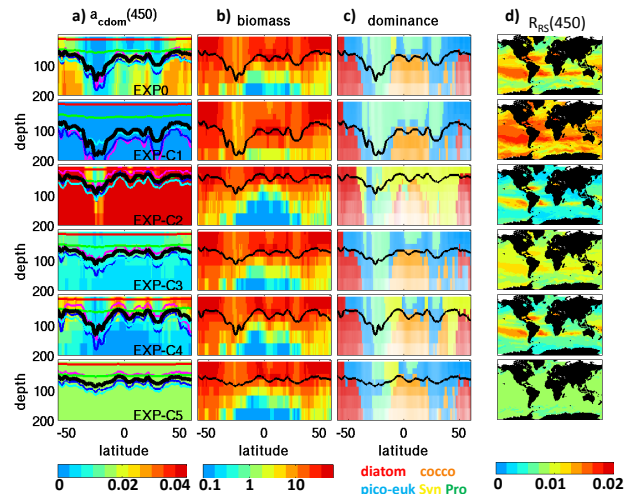
**Figure 17.** Detritus sensitivity experiments. (a) Absorption by detritus ( $a_{\text{det}}$ , units  $\text{m}^{-1}$ ) at 450 nm with 1 % total light contour (black line) and for 400, 450, 500, 550, and 600 nm wavebands (purple, dark blue, light blue, green, and red). (b) Total phytoplankton biomass ( $\text{mgC m}^{-3}$ ). (c) Dominant phytoplankton type (red: diatom; orange: coccolithophores; blue: picoeukaryotes; yellow: *Synechococcus*; green: *Prochlorococcus*; opacity represents the total biomass). (d) 450 nm remotely sensed reflectance ( $\text{sr}^{-1}$ ). Black line in (b) and (c) indicates the 1 % total irradiance contour. Each row represents a different experiment. EXP0 is the default experiment showcased in the earlier text. EXP-D1: no  $a_{\text{det}}$ ; EXP-D2:  $4 \cdot a_{\text{det}}$ ; EXP-D3: no  $b_{\text{det}}$ ; EXP-D4:  $4 \cdot b_{\text{det}}$ ; EXP-D5:  $a_{\text{det}}$  parameterized as a function of POC concentration.

(Fig. 19c), showing that the photosynthetic absorption specific to each type is important for the emergent biogeography as has been suggested by previous studies (Bidigare et al., 1990a; Huisman and Weissing, 1995; Moore et al., 1995; Stomp et al., 2004; Hickman et al., 2010). In this study, coccolithophores have a spectrum that absorbs well in the blue–green light (Fig. 1a.) Once this advantage is removed diatoms, take over their domain. Changes to irradiance reflectance also occur as a direct result (Fig. 19d).

When assuming a mean scattering spectrum for all phytoplankton (EXP-P5) we find, similar to EXP-P3, almost no difference to the irradiance field, dominant functional type, or biogeography. There are, however, small changes to the reflectance. Changes in the reflectance are also apparent when the mean  $a_{\text{phy}}$  was used (EXP-P4). Differences in reflectance caused by phytoplankton optical properties underpin many efforts to map phytoplankton functional groups from space (see e.g. IOCCG report 15, 2014).

## 6 Discussion

In this paper we have presented a version of the MIT biogeochemistry–ecosystem model (the “Darwin Project” model) which now incorporates radiative transfer, spectrally

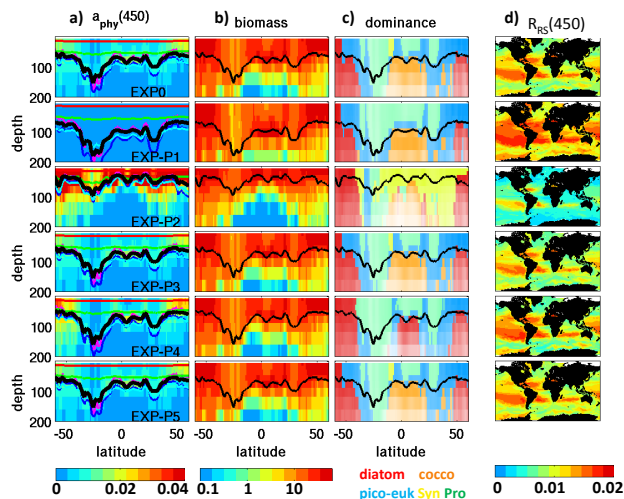


**Figure 18.** CDOM sensitivity experiments. (a) Absorption by CDOM ( $a_{\text{cdom}}$ , units  $\text{m}^{-1}$ ) at 450 nm with 1 % total irradiance contour (black line) and for 400, 450, 500, 550, and 600 nm wavebands (purple, dark blue, light blue, green, and red). (b) Total phytoplankton biomass ( $\text{mgC m}^{-3}$ ). (c) Dominant phytoplankton type (red: diatom; orange: coccolithophores; blue: picoeukaryotes; yellow: *Synechococcus*; green: *Prochlorococcus*; opacity represents the total biomass). (d) 450 nm remotely sensed reflectance ( $\text{sr}^{-1}$ ). Black line in (b) and (c) indicates the 1 % total irradiance contour. Each row represents a different experiment. EXP0 is the default experiment showcased in the earlier text. EXP-C1: no  $a_{\text{cdom}}$ ; EXP-C2:  $4 \cdot a_{\text{cdom}}$ ; EXP-C3:  $a_{\text{cdom}}$ , a function of Chl  $a$ ; EXP-C4:  $a_{\text{cdom}}$ , a function of DOM; EXP-C5:  $a_{\text{cdom}}$ , uniform.

resolved irradiance, and explicit representation of optically important water constituents. Our treatment of optical properties combines many features from prior studies (e.g. Gregg et al., 2007; Fujii et al., 2007; Mobley, 2011; Bissett et al., 1999, 2004) but is more comprehensive than most. In particular, we include a detailed absorption by several different types of phytoplankton as in Gregg and Casey (2007), explicitly resolve a CDOM-like tracer as in Xiu and Chai (2014) and Bissett et al. (1999), and also resolve detrital particulate matter in a similar manner to Fujii et al. (2007).

We have evaluated our model against a range of in situ observations and satellite-derived products. The model captures the large-scale biogeochemical, ecosystem, and optical characteristics as suggested by these data sets. In particular, we have used a unique data set collected during AMT-15 which includes concurrent optical, biogeochemical, and ecosystem measurements. The model captures the observed basin scale and vertical distribution. In many of the instances where the model does not compare well to the observations, we find that the physics of the model are at least partly responsible.

The model captures spatial light absorption by different optical constituents and the relative magnitude of the scattering. However, the scattering, particularly by detrital particles, remains the least well constrained aspect (see Sect. 2.6).



**Figure 19.** Phytoplankton sensitivity experiments. (a) Absorption by phytoplankton ( $a_{\text{phy}}$ , units  $\text{m}^{-1}$ ) at 450 nm with 1 % total irradiance contour (black line) and for 400, 450, 500, 550, and 600 nm wavebands (purple, dark blue, light blue, green, and red). (b) Total phytoplankton biomass ( $\text{mg C m}^{-3}$ ). (c) Dominant phytoplankton type (red: diatom; orange: coccolithophores; blue: picoeukaryotes; yellow: *Synechococcus*; green: *Prochlorococcus*; opacity represents the total biomass). (d) 450 nm remotely sensed reflectance ( $\text{sr}^{-1}$ ). Black line (b) and (c) indicates the 1 % total irradiance contour. Each row represents a different experiment. EXP0 is the default experiment showcased earlier in the text. EXP-P1: no  $a_{\text{phy}}$ ; EXP-P2:  $4 \cdot a_{\text{phy}}$ ; EXP-P3: no  $b_{\text{phy}}$ ; EXP-P4:  $a_{\text{phy}}^{\text{chl}}$  mean spectrum for all phytoplankton; EXP-P5:  $b_{\text{phy}}^{\text{C}}$  mean spectrum for all phytoplankton.

Each of the optical constituents resolved in the model (water, CDOM, detrital particles, and phytoplankton) has an important role in attenuating irradiance through the water column, but the relative importance differs between regions, with depth, and with wavelength (Fig. 15). CDOM was relatively more important to light absorption in highly productive regions, phytoplankton were important at the subsurface Chl *a* maximum and absorption by water was most important in the clear oligotrophic waters.

Our sensitivity experiments suggest that models that neglect the explicit and independently varying absorption by detrital particulate matter and CDOM are missing important components that have implications for the biogeochemistry and productivity of the model. For instance, we find that the magnitude of the light absorption of any of the water constituents that we resolve is important in setting the penetration of irradiance in different wavebands. The subsurface Chl *a* maximum can indeed be captured without including all constituents and spectral light (as seen in EXP-V0, and in other models; e.g. Fennel and Boss, 2003; Wang et al., 2009). However, the model developments presented were necessary for capturing the regional variability in depth of the subsurface Chl *a* maximum, in particular by resolving the deep pen-

etration of blue–green wavelengths in the subtropical gyres. Not including any of the constituents leads to an unrealistically regionally uniform depth of the subsurface Chl *a* maximum.

Changes to the irradiance spectrum will have important ramifications for the community structure. Lower absorption by the optical constituents leads to deeper penetration of blue light and favours phytoplankton which absorb better in the shorter wavelengths (e.g. *Prochlorococcus*). However, the penetration of light also has a large impact on the biogeochemistry and biogeography at global scales. In the sensitivity studies with less light absorption, there was more primary production at the higher latitudes and reduced nutrient transport to the lower latitudes. Thus changes in absorption could impact the size of the oligotrophic regions, which in turn impact the community structure.

An important product of the model is the surface irradiance reflectance, which provides a more direct comparison to satellite data than derived products such as Chl *a* or primary production. These derived products rely on empirical algorithms to convert from more direct measurement of ocean colour (e.g. reflectance), which introduce a large degree of uncertainty to the output (see e.g. Campbell et al., 2002; Carr et al., 2006). Thus directly relating model output to satellite reflectance shows great promise.

The absorption by any of the optical constituents strongly determines the amount of upwelling irradiance and consequently the surface reflectance. In particular, we found that the regional variations in CDOM are important in setting the patterns of reflectance (see EXP-C5). Though alterations to scattering appears to have little effect on the in-water optical fields, they have a significant impact on the surface reflectance fields. Even slight changes to the scattering by phytoplankton (see EXP-P5) have an effect on the reflectance. Such changes are important when attempting to retrieve information on the community structure from ocean colour satellite products (e.g. IOCCG report 15, 2014).

## 7 Conclusions

The amount and type of irradiance that penetrates through the water column is an important issue when studying phytoplankton productivity and community structure. And yet, ocean models routinely offer very crude parameterizations of light attenuation and neglect the spectral quality. We have improved the MITgcm ecosystem and biogeochemistry model by incorporating spectral light, explicit radiative transfer, and representations of several optical constituents. The model performed well when compared to observations. Capturing each of the optically important constituents explicitly and including a spectrum of light was important for obtaining realistic variability in depth of the subsurface Chl *a* maximum and in resolving the deep penetration of blue–green wave-

lengths in the subtropical gyres important for phytoplankton community structure.

The sensitivity studies were intentionally hypothetical to provide a wide range of responses. They provide evidence that capturing how each of the optical constituents absorbs and scatters irradiance has important ramifications for biogeochemistry and the phytoplankton community structure. This feedback between the light field and the biogeochemistry can only be captured by a fully three-dimensional coupled ecosystem–radiative transfer model.

The model provides a platform to explore the relative importance of different optical constituents for biogeography, biogeochemistry, and optical properties such as those measured by satellite. We believe that this model will be useful in examining the role of the irradiance spectrum and pigments in setting biogeography, in exploring how changes in irradiance and/or optical constituents will impact the future oceans, and in providing a laboratory to explore the use of water-leaving radiance as a marker of changes in the marine ecosystem.

### Appendix A: Ecosystem and biogeochemical model equations

The model equations are based on those of Follows et al. (2007), Dutkiewicz et al. (2009, 2012), and Hickman et al. (2010). We consider the cycling of phosphorus, nitrogen, silica, and iron, as well as carbon, alkalinity, and dissolved oxygen (the latter three following Ullman et al., 2009). We also resolve here explicit dynamic Chl *a* (following Geider et al., 1998) and a tracer that mimics coloured dissolved organic matter (CDOM). We provide a complete set of the equations here.

Several nutrients,  $N_j$ , nourish many phytoplankton types,  $P_j$ , which are grazed by several zooplankton types,  $Z_k$ . Mortality of and excretion from plankton, as well as sloppy feeding by zooplankton, contribute to a dissolved organic matter,  $DOM_i$ , pool and a sinking particulate organic matter pool,  $POM_i$ . Subscript  $i$  refers to a nutrient/element,  $j$  to a specific phytoplankton type, and  $k$  to a zooplankton type. Here  $i$  is  $PO_4$ , inorganic fixed nitrogen (which includes  $NO_3$ ,  $NO_2$ ,  $NH_4$ ), Fe, Si, and C. Particulate inorganic carbon (PIC), alkalinity (A), and dissolved oxygen ( $O_2$ ) are also included in this framework. All tracers,  $X$ , are advected and diffused by the three-dimensional flow fields:

$$\frac{\partial X}{\partial t} = -\nabla \cdot (\mathbf{u}X) + \nabla \cdot (\mathbf{K}\nabla X) + S_X, \quad (A1)$$

where  $\mathbf{u} = (u, v, w)$ , velocity in physical model,  $\mathbf{K}$  are the mixing coefficients used in physical model, and  $S_X$  are sources and sinks of tracer  $X$ .

The source and sinks of each tracer,  $S_X$ , are different and including biological transformations, chemical reactions, and external sources and sinks. Phytoplankton are assumed to have fixed elemental ratios following Redfield (1934). The base currency of the plankton equations is phosphorus.

*Nutrients:*

$$S_{PO_4} = -\sum_j [\mu_j P_j] + r_{dop} \gamma_T DOP, \quad (A2)$$

$$S_{Si} = -\sum_j [\mu_j P_j \mathbf{M}_{Si_j}] + r_{dosi} \gamma_T POSi, \quad (A3)$$

$$S_{FeT} = -\sum_j [\mu_j P_j \mathbf{M}_{FeT_j}] + r_{dofe} \gamma_T DOFe - c_{scav} Fe' + F_{atmos} + F_{sed}, \quad (A4)$$

$$S_{NO_3} = -\sum_j [\mu_j P_j \mathbf{M}_{IN_j} \Gamma_{no3_j}] + \zeta_{no3} NO_2 - (1 - H_{ocrit}) \frac{R_{dno3}}{R_{denit}} D_{denit}, \quad (A5)$$

$$S_{NO_2} = -\sum_j [\mu_j P_j \mathbf{M}_{IN_j} \Gamma_{no2_j}] + \zeta_{no2} NH_4 - \zeta_{no3} NO_2, \quad (A6)$$

$$S_{NH_4} = -\sum_j [\mu_j P_j \mathbf{M}_{IN_j} \Gamma_{nh4_j}] + r_{don} \gamma_T DON, \quad (A7)$$

$$S_C = -\sum_j [\mu_j P_j \mathbf{M}_{C_j}] - \sum_j [\mu_j P_j R_{r_j}] + r_{doc} \gamma_T DOC + d_{pic} PIC + F_C + D_C. \quad (A8)$$

*Plankton:*

$$S_{P_j} = \mu_j P_j - m_{pj} \gamma_T P_j - \sum_k [g_{jk} Z_{k,i=1}] - \frac{\partial (w_{pj} P_j)}{\partial z}, \quad (A9)$$

$$S_{Z_{ki}} = Z_{ki} \sum_j [\zeta_{jk} g_{jk} \mathbf{M}_{ij}] - m_{zk} \gamma_T Z_{ki} - m_{z2k} \gamma_T Z_{ki}^2. \quad (A10)$$

*Chlorophyll a:*

$$S_{Chl_j} = \mathbf{M}_{C_j} \left( \rho_j \mu_j P_j - \theta_j m_{pj} \gamma_T P_j - \theta_j \sum_k [g_{jk} Z_{k,i=1}] - \frac{\partial (w_{pj} Chl_j)}{\partial z} \right) + t_{chl} (\theta_{oj} - \mathbf{M}_{C_j} \theta_j P_j). \quad (A11)$$

*Particulate and dissolved matter:*

$$S_{POM_i} = -r_{pom_i} \gamma_T POM_i - \frac{\partial (w_{pom_i} POM_i)}{\partial z} + \sum_j [(1 - \varphi_{mpij}) m_{pj} \gamma_T P_j \mathbf{M}_{ij}] + \sum_k [(1 - \varphi_{mz_k}) (m_{zk} \gamma_T Z_{ik} + m_{z2k} \gamma_T Z_{ik}^2)] + \sum_k \sum_j [(1 - \varphi_{g_{ijk}}) (1 - \zeta_{jk}) g_{ij} \mathbf{M}_{ij} Z_k], \quad (A12)$$

$$\begin{aligned}
S_{\text{DOM}_i} = & -r_{\text{dom}_i} \gamma_{\text{T}} \text{DOM}_i + (1 - f_{\text{cdom}}) \left( r_{\text{pom}_i} \gamma_{\text{T}} \text{POM}_i \right. \\
& + \sum_j [\varphi_{\text{mp}_{ij}} m_{\text{pj}} \gamma_{\text{T}} P_j \mathbf{M}_{ij}] \\
& + \sum_k \left[ \varphi_{\text{mz}_{ik}} \left( m_{\text{zk}} \gamma_{\text{T}} Z_{\text{ik}} + m_{\text{z2k}} \gamma_{\text{T}} Z_{\text{ik}}^2 \right) \right] \\
& + \sum_k \sum_j \left[ \varphi_{\text{g}_{ijk}} (1 - \zeta_{jk}) g_{ij} \mathbf{M}_{ij} Z_{\text{ki}} \right] \\
& + \gamma_{\text{T}} \text{CDOM}_i \left[ d_{\text{cdom}} + t_{\text{cdom}} \min \left( \frac{\sum_{\lambda=400}^{\lambda=700} E_0(\lambda)}{I_{\text{cdom}}}, 1 \right) \right], \quad (\text{A13})
\end{aligned}$$

$$\begin{aligned}
S_{\text{CDOM}_i} = & f_{\text{cdom}} \left( r_{\text{pom}_i} \gamma_{\text{T}} \text{POM}_i \right. \\
& + \sum_j [\varphi_{\text{mp}_{ij}} m_{\text{pj}} \gamma_{\text{T}} P_j \mathbf{M}_{ij}] \\
& + \sum_k \left[ \varphi_{\text{mz}_{ik}} \left( m_{\text{zk}} \gamma_{\text{T}} Z_{\text{ki}} + m_{\text{z2k}} \gamma_{\text{T}} Z_{\text{ki}}^2 \right) \right] \\
& + \sum_k \sum_j \left[ \varphi_{\text{g}_{ijk}} (1 - \zeta_{jk}) g_{ij} \mathbf{M}_{ij} Z_{\text{ki}} \right] \\
& - \gamma_{\text{T}} \text{CDOM}_i \left[ d_{\text{cdom}} + t_{\text{cdom}} \min \left( \frac{\sum_{\lambda=400}^{\lambda=700} E_0(\lambda)}{I_{\text{cdom}}}, 1 \right) \right], \quad (\text{A14})
\end{aligned}$$

$$\begin{aligned}
S_{\text{PIC}} = & -d_{\text{pic}} \text{PIC} - \frac{\partial (w_{\text{pic}} \text{PIC})}{\partial z} + \sum_j [m_{\text{pj}} \gamma_{\text{T}} P_j R_{\text{rj}}] \\
& + \sum_k \sum_j [g_{ij} R_{\text{rj}} Z_{\text{ki}}]. \quad (\text{A15})
\end{aligned}$$

*Alkalinity:*

$$\begin{aligned}
S_{\text{A}} = & \sum_j [\mu_j P_j \mathbf{M}_{\text{NO}_3, j}] - S_{\text{NO}_3} \\
& - 2 \left( \sum_j [\mu_j P_j R_{\text{rj}}] + d_{\text{pic}} \text{PIC} \right) + D_{\text{A}}. \quad (\text{A16})
\end{aligned}$$

*Dissolved oxygen:*

$$S_{\text{O}_2} = F_{\text{O}_2} + \mathbf{M}_{\text{O}_j} \sum_j \mu_j P_j - H_{\text{ocrit}} M_{\text{O}_j} r_{\text{dom}_i} \gamma_{\text{T}} \text{DOM}_i. \quad (\text{A17})$$

where  $\mu_j$  is the growth rate of phytoplankton  $j$  (function provided below),

$\mathbf{M}_{ij}$  is the matrix of ratios of element  $i$  to phosphorus for phytoplankton  $j$ ,

$r_{\text{dom}_i}$  is remineralization rate of DOM for element  $i$ , here P, Fe, N, C,

$r_{\text{pom}_i}$  is degradation/remineralization rate of POM for element  $i$ , here P, Si, Fe, N, C,

$d_{\text{cdom}}$  is degradation rate of CDOM to DOM for element  $i$ , here P, Fe, N, C,

$\gamma_{\text{T}}$  is temperature regulation of biological rates (function provided below),

$c_{\text{scav}}$  is scavenging rate for free iron (function provided below),

$\text{Fe}'$  is free iron (description provided below),

$F_{\text{atmos}}$  is atmospheric deposition of iron dust on surface of model ocean,

$F_{\text{sed}}$  is the sedimentary source of iron (function provided below),

$\zeta_{\text{no}_3}$  is oxidation rate of  $\text{NO}_2$  to  $\text{NO}_3$  (function provided below),

$\zeta_{\text{no}_2}$  is oxidation rate of  $\text{NH}_4$  to  $\text{NO}_2$  (function provided below),

$\Gamma_{\text{no}_3, j}$  is fraction inorganic nitrogen uptake from nitrate (function provided below),

$\Gamma_{\text{no}_2, j}$  is fraction inorganic nitrogen uptake from nitrite (function provided below),

$\Gamma_{\text{nh}_4, j}$  is fraction inorganic nitrogen uptake from ammonium (function provided below),

$H_{\text{ocrit}} = 1$  if  $\text{O} > \text{O}_{\text{crit}}$  and 0 if  $\text{O} = < \text{O}_{\text{crit}}$ ,

$\text{O}_{\text{crit}}$  is critical oxygen level for denitrification,

$R_{\text{denit}}$  is N : P ratio in denitrification,

$R_{\text{dno}_3}$  is ratio of  $\text{NO}_3$  relative to all N in denitrification,

$D_{\text{denit}}$  is denitrification rate (function provided below),

$R_{\text{rj}}$  is ratio of inorganic carbon to organic phosphorus produced by phytoplankton  $j$ ,

$F_{\text{C}}$  is air–sea flux of carbon dioxide (function provided below),

$D_{\text{C}}$  is dilution/concentration of carbon by addition/loss freshwater,

$D_{\text{A}}$  is dilution/concentration of alkalinity by addition/loss freshwater,

$F_{\text{O}_2}$  is air–sea flux of oxygen (function provided below),

$d_{\text{pic}}$  is dissolution rate of PIC,

$m_{\text{pj}}$  is mortality/excretion rate for phytoplankton  $j$ ,

$m_{\text{zk}}$  is mortality/excretion rate for zooplankton  $k$ ,

$m_{\text{z2k}}$  is quadratic mortality for zooplankton  $k$ ,

$g_{jk}$  is grazing of zooplankton  $k$  on phytoplankton  $j$  (function provided below),

$\zeta_{jk}$  is grazing efficiency of zooplankton  $k$  on phytoplankton  $j$  (function provided below),

$w_{\text{pj}}$  is sinking rate for phytoplankton  $j$ ,

$w_{\text{pom}_i}$  is sinking rate for POM  $i$ ,

$w_{\text{pic}}$  is sinking rate for PIC,

$\rho_j$  is Chl  $a$  : C of new growth (function provided below),

$\theta_j$  is local Chl  $a$  : C ratio,

$\theta_{oj}$  is acclimated Chl  $a$  : C (function provided below),

$t_{\text{chl}}$  is acclimation timescale for Chl  $a$ ,

$\varphi_{\text{mp}_{ij}}$  is fraction of dead/respired phytoplankton organic matter that goes to DOM $_i$ ,

$\varphi_{\text{mz}_{ik}}$  is fraction of dead/respired zooplankton organic matter that goes to DOM $_i$ ,

$\varphi_{\text{g}_{ijk}}$  is fraction of sloppy grazing that goes to DOM $_i$ ,

$f_{\text{cdom}}$  is fraction of DOM produced that enters CDOM pool,

$t_{\text{cdom}}$  is bleaching rate for CDOM,

$\sum_{\lambda=400}^{\lambda=700} E_0(\lambda)$  is local total scalar irradiance,

$I_{\text{cdom}}$  is PAR above which CDOM bleaches.



### A1 Temperature regulation of biological rates

Biological rates (plankton growth and the parameterization of remineralization of organic matter) are represented as a function of temperature, following the Arrhenius equation (Kooijman, 2000), similar to Eppley (1972):

$$\gamma_T = \tau_1 e^{\left( A_E \left( \frac{1}{T+273.15} - \frac{1}{T_o} \right) \right)}, \quad (\text{A18})$$

where  $\tau_1$  is a coefficient to normalize the maximum value,  $A_E$  and  $T_o$  regulate the form of the temperature modification function, and  $T$  is the local model ocean temperature.

### A2 Phytoplankton growth

Phytoplankton growth is a function of temperature, irradiance, and nutrients. We follow Hickman et al. (2010), which in turn follows Geider et al. (1998), such that the growth rate is equal to the carbon-specific photosynthesis rate:

$$\mathcal{P}_j^C = \mathcal{P}_{mj}^C \left( 1 - e^{\left( \frac{-\Lambda_{Ej} \theta_j}{\mathcal{P}_{mj}^C} \right)} \right), \quad (\text{A19})$$

where  $\mathcal{P}_{mj}^C$  is light-saturated photosynthesis rate (see function below),  $\Lambda_{Ej}$  is the scalar irradiance absorbed by each phytoplankton multiplied by  $\phi_{\max_j}$ , the maximum quantum yield of carbon fixation (see function below), and  $\theta_j$  is Chl  $a$ : C for each phytoplankton (see function below).

The light-saturated photosynthesis rate is a function of nutrients and temperatures:

$$\mathcal{P}_{mj}^C = \mathcal{P}_{m\max_j}^C \gamma_T \gamma_{Nj}, \quad (\text{A20})$$

where  $\mathcal{P}_{m\max_j}^C$  is maximum photosynthesis rate of phytoplankton  $j$ ,  $\gamma_T$  is modification of growth rate by temperature (see above), and  $\gamma_{Nj}$  is modification of growth rate by nutrients for phytoplankton  $j$  (see function below).

For each phytoplankton  $j$ ,

$$\Lambda_{Ej} = \phi_{\max_j} \sum_{\lambda=400}^{\lambda=700} a_{psj}^{\text{chl}}(\lambda) E_0(\lambda) \quad (\text{A21})$$

is the scalar irradiance absorbed by each phytoplankton,  $j$ , multiplied by  $\phi_{\max_j}$ , the maximum quantum yield of carbon fixation (units  $\text{mmolC}(\text{mgChl } a)^{-1}\text{d}^{-1}$ ). This is by definition the spectrally resolved product of irradiance and the initial slope of the Chl  $a$  normalized photosynthesis versus irradiance curve.  $a_{psj}^{\text{chl}}(\lambda)$  is the Chl  $a$ -specific photosynthetic absorption spectra in each waveband  $\lambda$ .

The local Chl  $a$ : C ratio  $\theta_j$  is

$$\theta_j = \frac{\text{Chl}_j}{P_j \mathbf{M}_{Cj}}. \quad (\text{A22})$$

The increase of Chl  $a$  due to growth term ( $\mathbf{M}_{Cj} \rho_j \mu_j P_j$ ) in Eq. (A11) follows Geider et al. (1998), with

$$\rho_j = \theta_{\max_j} \frac{\mathcal{P}_j^C}{\Lambda_{Ej} \theta_{oj}}, \quad (\text{A23})$$

and the acclimated Chl  $a$ : C follows Geider et al. (1997):

$$\theta_{oj} = \frac{\theta_{\max_j}}{1 + \frac{\Lambda_{Ej} \theta_{\max_j}}{2 \mathcal{P}_{mj}^C}}, \quad (\text{A24})$$

where  $\theta_{\max_j}$  is the maximum Chl  $a$ : C ratio each phytoplankton can reach.

Phytoplankton can be photoinhibited (following Hickman et al., 2010), such that  $\mathcal{P}_j^C$  reduces to  $\mathcal{P}_{\text{inhib}_j}^C$  above  $E_{kj}$ :

$$\mathcal{P}_{\text{inhib}_j}^C = \mathcal{P}_j^C \kappa_{\text{inhib}} \frac{E_{kj}}{\sum_{\lambda=400}^{\lambda=700} E_0(\lambda)}, \quad (\text{A25})$$

where  $\kappa_{\text{inhib}}$  is the inhibition coefficient and  $E_{kj}$  is the light saturation parameter.

$$E_{kj} = \frac{\mathcal{P}_{mj}^C}{\phi_{\max_j} \theta_j a_{psj}^{\text{chl}}(\lambda)}, \quad (\text{A26})$$

where  $a_{psj}^{\text{chl}}(\lambda)$  is the mean light absorption by photosynthetic pigments between 400 and 700 nm.

Nutrient limitation is determined by the most limiting nutrient:

$$\gamma_{Nj} = \min(N_{\text{lim}_j}). \quad (\text{A27})$$

Limitations by  $\text{PO}_4$ , Si, and Fe are all parameterized following the Michaelis–Menton formulation:

$$N_{\text{lim}_j} = \frac{N_i}{N_i + \kappa_{Nij}}, \quad (\text{A28})$$

where  $\kappa_{Nij}$  is the half-saturation constant of nutrient  $i = \text{PO}_4$ , Si, Fe for phytoplankton  $j$ .

Nitrogen is available in three forms, of which ammonia is the preferred type:

$$N_{\text{Nlim}_j} = \frac{\text{NO}_3 + \text{NO}_2}{\text{NO}_3 + \text{NO}_2 + \kappa_{\text{inj}}} e^{-\psi \text{NH}_4} + \frac{\text{NH}_4}{\text{NH}_4 + \kappa_{\text{nh}_4j}}, \quad (\text{A29})$$

where  $\kappa_{\text{inj}}$  is the half-saturation constant of  $\text{IN} = \text{NO}_3 + \text{NO}_2$ ,  $\kappa_{\text{nh}_4j}$  is the half-saturation constant of  $\text{NH}_4$ , and  $\psi$  reflects the fixed nitrogen uptake inhibition by ammonia.

### A3 Zooplankton parameterization

Zooplankton grazing is parameterized as

$$g_{jk} = g_{\max_{jk}} \gamma_T \frac{\eta_{jk} P_j}{G_k} \frac{G_k^n}{G_k^n + \kappa_{pk}^n}, \quad (\text{A30})$$

where  $g_{\max,jk}$  is maximum grazing rate of zooplankton  $k$  on phytoplankton  $j$ ;  $\eta_{jk}$  is palatability of plankton  $j$  to zooplankton  $k$ ;  $G_k$  is palatability (for zooplankton  $k$ ) weighted total phytoplankton concentration, equal to  $\sum_j [\eta_{jk} P_j]$ ;  $\kappa_{pk}$  is the half-saturation constant for grazing of zooplankton  $k$ ; and  $n$  is exponent for Holling type II or III ( $n = 1$  or  $2$ ), in this study  $n = 2$ .

The maximum grazing  $g_{\max,jk}$  depends of the relative size of the phytoplankton  $j$  and zooplankton  $k$ , with a faster rate if they are both small or both big ( $g_{\max,a}$ ), and slower if they are in different size classes ( $g_{\max,b}$ ).

Zooplankton are assumed to have both a linear and quadratic loss term. The linear term represents excretion and mortality; the quadratic loss terms represent grazing by higher trophic levels (Steele and Henderson, 1992) that are not explicitly resolved in this model.

#### A4 Nitrogen cycle

Phytoplankton take up DIN in three forms ( $\text{NH}_4$ ,  $\text{NO}_2$ , and  $\text{NO}_3$ ). To separate out how much comes from each source we have the functions  $\Gamma$  in Eqs. (A5)–(A7):

$$\Gamma_{\text{no}3j} = \frac{\frac{\text{NO}_3}{\text{NO}_3 + \text{NO}_2 + \kappa_{\text{in}j}} e^{-\psi \text{NH}_4}}{N_{\text{Nlim}j}}, \quad (\text{A31})$$

$$\Gamma_{\text{no}2j} = \frac{\frac{\text{NO}_2}{\text{NO}_3 + \text{NO}_2 + \kappa_{\text{in}j}} e^{-\psi \text{NH}_4}}{N_{\text{Nlim}j}}, \quad (\text{A32})$$

$$\Gamma_{\text{nh}4j} = \frac{\frac{\text{NH}_4}{\text{NH}_4 + \kappa_{\text{nh}4j}}}{N_{\text{Nlim}j}}. \quad (\text{A33})$$

The oxidation of  $\text{NH}_4$  to  $\text{NO}_2$  and  $\text{NO}_2$  to  $\text{NO}_3$  is parameterized as a function of the total scalar irradiance:

$$\zeta_{\text{no}3} = \zeta_{\text{ono}3} \left( 1 - \frac{\sum_{\lambda=400}^{\lambda=700} E_0(\lambda)}{I_0} \right), \quad (\text{A34})$$

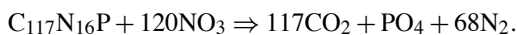
$$\zeta_{\text{no}2} = \zeta_{\text{ono}2} \left( 1 - \frac{\sum_{\lambda=400}^{\lambda=700} E_0(\lambda)}{I_0} \right), \quad (\text{A35})$$

where  $\zeta_{\text{ono}3}$  and  $\zeta_{\text{ono}2}$  are maximum rates and  $I_0$  is critical light level below which oxidation occurs.

Denitrification occurs when  $\text{O} < \text{O}_{\text{crit}}$ , in which case  $\text{O}_2$  is not used during remineralization but instead  $\text{NO}_3$  is used, such that

$$D_{\text{denit}} = R_{\text{denit}} \nu_{\text{dop}} \gamma_{\text{T}} \text{DOP}. \quad (\text{A36})$$

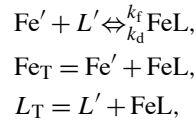
We assume the denitrification formula suggested by Andersen (1995) for determining  $R_{\text{denit}}$ :



#### A5 Iron parameterization

The iron model we use is based on that of Parekh et al. (2004, 2005). We explicitly model the complexation of iron with an

organic ligand:



where  $\text{Fe}'$  and  $\text{L}'$  are free iron and ligand, respectively,  $\text{FeL}$  is ligand-bound iron,  $L_{\text{T}}$  is total organic ligand (assumed to be a constant),  $\beta_{\text{fe}} = \frac{k_{\text{f}}}{k_{\text{d}}}$  is ligand binding strength,  $k_{\text{f}}$  is the forward rate constant, and  $k_{\text{d}}$  is the reverse rate constant.

We assume that only the free iron ( $\text{Fe}'$ ) can be scavenged,  $c_{\text{scav}} \text{Fe}'$ , and parameterize this as a function of the particulate organic carbon (POC) present (empirical values based on those found for thorium; Honeyman et al., 1988); a similar approach was used in Parekh et al. (2005):

$$c_{\text{scav}} = c_o (R_{\text{C:P}} \text{POP})^{\xi}, \quad (\text{A37})$$

where  $c_o$  determines maximum scavenging rate for iron,  $\xi$  is an empirically determined constant, and  $R_{\text{C:P}}$  is the carbon to phosphorus ratio of the POM.

The sedimentary source ( $F_{\text{sed}}$ ) is parameterized as a function of the sinking organic matter reaching the ocean bottom as suggested by Elrod et al. (2004):

$$F_{\text{sed}} = R_{\text{sed}} \frac{(\partial w_{\text{pom}} \text{POP})}{\partial z}, \quad (\text{A38})$$

where  $R_{\text{sed}}$  is the ratio of sediment iron to sinking organic matter.

#### A6 Air–sea exchange

Air–sea exchange of  $\text{CO}_2$  and  $\text{O}_2$  are given by

$$F_{\text{C}} = k_{\text{wc}} ([\text{CO}_2] - [\text{CO}_2]_{\text{sat}}), \quad (\text{A39})$$

$$F_{\text{O}} = k_{\text{wo}} ([\text{O}_2] - [\text{O}_2]_{\text{sat}}), \quad (\text{A40})$$

where  $k_{\text{wi}}$  is the gas transfer velocity for  $i = \text{CO}_2, \text{O}_2$ ;  $[\text{CO}_2]$  is sea surface concentration of carbon dioxide;  $[\text{CO}_2]_{\text{sat}}$  is the partial  $\text{CO}_2$  in the water if it were fully saturated;  $[\text{O}_2]$  is sea surface concentration of oxygen; and  $[\text{O}_2]_{\text{sat}}$  is the partial pressure of  $\text{O}_2$  in the water if it were fully saturated.

Dissolved inorganic carbon (DIC) carried in the model is made up of carbon dioxide and carbonic acid and other carbonate species:

$$\text{DIC} = [\text{CO}_2^*] + [\text{HCO}_3] + [\text{CO}_3].$$

$[\text{CO}_2]$  is calculated from DIC and alkalinity concentrations following Follows et al. (2006), which included deducing the pH at all surface locations. The gas transfer coefficient is parameterized following Wanninkhof (1992) and is a function of the wind speed and Schmidt number (a function of sea surface temperature).  $[\text{CO}_2]_{\text{sat}}$  is determined as a function of partial pressures of  $\text{CO}_2$  in the air, atmospheric pressure, sea surface temperature, and salinity.  $[\text{O}_2]_{\text{sat}}$  is provided

by Garcia and Gordon (1992). All coefficients of the air–sea flux calculations are determined using the algorithms used in the Ocean Carbon-Cycle Model Intercomparison Project (OCMIP) (e.g. Matsumoto et al., 2004).

### Appendix B: Ocean radiative transfer model: three-stream parameterization

The radiance in the ocean in its most general form,  $L(\mathbf{x}, \theta, \varphi, \lambda)$ , depends on location and orientation in addition to wavelength (units  $\text{W m}^{-2} \text{sr}^{-1} \text{nm}^{-1}$ ). Neglecting horizontal gradients, the  $z$  dependence of  $L$  is described by the classical radiative transfer equation,

$$\frac{dL(\theta, \varphi)}{dz} \cos \theta = -cL(\theta, \varphi) + \int \beta(\theta, \varphi, \theta', \varphi') L(\theta', \varphi') d\Omega', \quad (\text{B1})$$

where  $\beta(\theta, \varphi, \theta', \varphi')$  is the rate of scattering of light from  $\theta', \varphi'$  into  $\theta, \varphi$ . We assume that the ocean is optically isotropic, so  $\beta$  is invariant under simultaneous rotation of original and scattered angles (in fact it depends only on the relative angle). The integral over one set of angles therefore yields an angle-independent value,

$$\int_{4\pi} \beta(\theta, \varphi, \theta', \varphi') d\Omega' = \int_{4\pi} \beta(\theta, \varphi, \theta', \varphi') d\Omega' = b.$$

Here,  $b$  is then the total scattering coefficient and the total scattered light is

$$\iint \beta(\theta, \varphi, \theta', \varphi') L(\theta', \varphi') d\Omega' d\Omega = b \int L(\theta', \varphi') d\Omega' = bE_0$$

and may be decomposed into forward and backward scattering coefficients,  $b = b_f + b_b$ , where

$$b_b = \int_{\theta > \pi/2} \beta(\theta, \varphi, 0, 0) d\Omega. \quad (\text{B2})$$

The attenuation coefficient  $c$  represents loss due to absorption and scattering,  $c = a + b$ .

At the sea surface, the downward part of  $L(\theta, \varphi)$  for  $\theta < \pi/2$  is required to equal the output of the atmospheric radiative transfer model (OASIM). The ocean is assumed to be infinitely deep, with vanishing light at infinite depth.

### Three-stream equations:

Following Aas (1987) and Ackelson et al. (1994), we first separate out the direct (collimated) beam from the radiance,

$$L(\theta, \varphi) = \delta(\cos \theta - \cos \theta_d) \delta(\varphi - \varphi_d) E_{0d}(z) + L'(\theta, \varphi),$$

where the downward scalar irradiance is  $E_{0d} = E_d / \cos \theta_d$ . The scattering term in Eq. (B1) does not have a collimated part, so the equation for  $E_d$  separates,

$$\frac{dE_d}{dz} = -c \frac{E_d}{\cos \theta_d}. \quad (\text{B3})$$

The downward diffuse and upward irradiance are defined as

$$E_s = \int_{\theta < \pi/2} L'(\theta, \varphi) \cos \theta d\Omega,$$

$$E_u = \int_{\theta > \pi/2} L(\theta, \varphi) \cos \theta d\Omega,$$

and Eq. (B1) is integrated over the downward hemisphere,

$$\begin{aligned} \frac{dE_s}{dz} &= \int_{\theta < \pi/2} \frac{dL(\theta, \varphi)}{dz} \cos \theta d\Omega - \frac{dE_d}{dz} \cos \theta_d \\ &= \int_{\theta < \pi/2} \left[ -cL(\theta, \varphi) + \int_{4\pi} \beta(\theta, \varphi, \theta', \varphi') L(\theta', \varphi') d\Omega' \right] d\Omega. \end{aligned}$$

The outer integral is split into contributions from  $E_d$  and down- and upwelling irradiance, using Eq. (B2) to rewrite the inner integral,

$$\begin{aligned} \iint \dots &= \left( b - \int_{\theta > \pi/2} \beta(\theta, \varphi, \theta_d, \varphi_d) d\Omega \right) E_{0d} \\ &+ \int_{\theta' < \pi/2} \left( b - \int_{\theta > \pi/2} \beta(\theta, \varphi, \theta', \varphi') d\Omega \right) L'(\theta', \varphi') d\Omega' \\ &+ \int_{\theta' > \pi/2} \int_{\theta < \pi/2} \beta(\theta, \varphi, \theta', \varphi') d\Omega L(\theta', \varphi') d\Omega'. \end{aligned}$$

The effective backward scattering coefficients are defined as corrections to  $b_b$ ,

$$\begin{aligned} r_s b_b &= \frac{1}{E_{0s}} \int_{\theta' < \pi/2} \int_{\theta > \pi/2} \beta(\theta, \varphi, \theta', \varphi') d\Omega L'(\theta', \varphi') d\Omega', \\ r_u b_b &= \frac{1}{E_{0u}} \int_{\theta' > \pi/2} \int_{\theta < \pi/2} \beta(\theta, \varphi, \theta', \varphi') d\Omega L(\theta', \varphi') d\Omega', \\ r_d b_b &= \int_{\theta > \pi/2} \beta(\theta, \varphi, \theta_d, \varphi_d) d\Omega, \end{aligned}$$

where

$$\begin{aligned} E_{0s} &= \int_{\theta < \pi/2} L'(\theta, \varphi) d\Omega, \\ E_{0u} &= \int_{\theta > \pi/2} L(\theta, \varphi) d\Omega. \end{aligned}$$

In terms of the effective backscattering coefficients,

$$\frac{dE_s}{dz} = -cE_{0s} + (b - r_s b_b)E_{0s} + r_u b_b E_{0u} + (b - r_d b_b)E_{0d}$$

Likewise,

$$-\frac{dE_u}{dz} = -cE_{0u} + (b - r_u b_b)E_{0u} + r_s b_b E_{0s} + r_d b_b E_{0d}.$$

$E_{0s}$  is related to the downwelling irradiance  $E_s$  by the average cosine of the zenith angle,

$$\bar{v}_s = \frac{E_s}{E_{0s}} = \frac{\int_{\theta < \pi/2} L' \cos \theta d\Omega}{\int_{\theta < \pi/2} L' d\Omega},$$

and similar for  $E_{0u}$ . The radiative transfer equations become

$$\frac{dE_s}{dz} = -\frac{a + r_s b_b}{\bar{v}_s} E_s + \frac{r_u b_b}{\bar{v}_u} E_u + \frac{b - r_d b_b}{\cos \theta_d} E_d, \quad (B4)$$

$$-\frac{dE_u}{dz} = -\frac{a + r_u b_b}{\bar{v}_u} E_u + \frac{r_s b_b}{\bar{v}_s} E_s + \frac{r_d b_b}{\cos \theta_d} E_d. \quad (B5)$$

In general,  $\bar{v}_s$  and  $\bar{v}_u$  depend on the angular profile of the radiation field, and  $r_s$  and  $r_u$ , which describe the scattering of downward into upward and upward into downward radiation, depend on both the scattering function and the radiation field.

We close the system of equations by making the following assumptions (following Aas, 1987):

$$\begin{aligned} r_d &\approx 1.0, \\ r_s &\approx 1.5, \\ r_u &\approx 3.0, \\ \bar{v}_s &\approx 0.83, \\ \bar{v}_u &\approx 0.4. \end{aligned}$$

Equations (B3)–(B5) are the three-stream equations (given in main text as Eqs. 1–3, though note that here we dispense with function of  $\lambda$  for simplicity).

The equation for  $E_d$  (Eqs. B3 or 1) is readily integrated,

$$E_d(z) = E_d(0) \exp \int_0^z \frac{-c(z')}{\cos \theta_d} dz'.$$

In contrast to Aas (1987), Ackelson et al. (1994) and Gregg (2002) we do not make further approximations but instead solve the remaining equations explicitly. We can write the remaining two equations (Eqs. B4 and B5, as well as Eqs. 2 and 3) as

$$\frac{d}{dz} \mathbf{E} = \mathbf{M} \mathbf{E} + \mathbf{I}, \quad (B6)$$

where

$$\mathbf{M} = \begin{pmatrix} -C_s & B_u \\ -B_s & C_u \end{pmatrix}, \quad \mathbf{E} = \begin{pmatrix} E_s \\ E_u \end{pmatrix}, \quad \mathbf{I} = \begin{pmatrix} F_d \\ -B_d \end{pmatrix} E_d \quad (B7)$$

and

$$\begin{aligned} C_s &= \frac{a + r_s b_b}{\bar{v}_s}, & B_u &= \frac{r_u b_b}{\bar{v}_u}, & F_d &= \frac{b - r_d b_b}{\cos \theta_d}, \\ C_u &= \frac{a + r_u b_b}{\bar{v}_u}, & B_s &= \frac{r_s b_b}{\bar{v}_s}, & B_d &= \frac{r_d b_b}{\cos \theta_d}. \end{aligned}$$

$M$ ,  $F_d$ , and  $B_d$  are assumed to be piece-wise constant as a function of  $z$ .

Following Kylling (1995) we write the inhomogeneous solution as

$$\mathbf{E} = \begin{pmatrix} x \\ y \end{pmatrix} E_d,$$

where  $x$  and  $y$  satisfy the equation

$$\begin{pmatrix} -C_s + c_d & B_u \\ -B_s & C_u + c_d \end{pmatrix} \begin{pmatrix} x \\ y \end{pmatrix} + \begin{pmatrix} F_d \\ -B_d \end{pmatrix} = 0 \quad (\text{B8})$$

with solution

$$\begin{pmatrix} x \\ y \end{pmatrix} = \frac{1}{(c_d - C_s)(c_d + C_u) + B_s B_u} \times \begin{pmatrix} c_d + C_u & -B_u \\ B_s & c_d - C_s \end{pmatrix} \begin{pmatrix} -F_d \\ B_d \end{pmatrix}. \quad (\text{B9})$$

The eigenvalues of  $M$  are

$$\kappa^- = D - C_s$$

$$-\kappa^+ = C_u - D = -C_s + \frac{B_s B_u}{D},$$

where

$$D = \frac{1}{2} \left( C_s + C_u + \sqrt{(C_s + C_u)^2 - 4B_s B_u} \right).$$

Within a computational layer, the general solution can be written as

$$\begin{pmatrix} E_s(z) \\ E_u(z) \end{pmatrix} = c_k^+ \begin{pmatrix} 1 \\ r_k^+ \end{pmatrix} e^{-\kappa_k^+(z-z_k)} + c_k^- \begin{pmatrix} r_k^- \\ 1 \end{pmatrix} e^{\kappa_k^-(z-z_{k+1})} + \begin{pmatrix} x_k \\ y_k \end{pmatrix} E_d(z),$$

where  $r^+ = R_2 = B_s/D$  and  $r^- = 1/R_1 = B_u/D$ . The offsets in the exponents have been introduced so that both exponentials are smaller than 1. The coefficients  $c^+$  and  $c^-$  have to be determined from boundary conditions. At the sea surface, we require that  $E_s$  and  $E_d$  coincide with the output of OASIM,

$$c_1^+ + r_1^- e^{-\kappa_1^- z_1} c_1^- = E_{s_0}^{\text{below}} - x_1 E_{d_0}^{\text{below}}.$$

In the bottom layer,  $k_{\text{bot}}$ , we require zero light at infinite depth, i.e.  $c_{k_{\text{bot}}}^- = 0$ . At layer boundaries,  $z_{k+1}$ , we require continuity,

$$e^{-\kappa_k^+(z_{k+1}-z_k)} c_k^+ + r_k^- c_k^- + x_k E_d(z_{k+1}) = c_{k+1}^+ + e^{\kappa_{k+1}^-(z_{k+1}-z_{k+2})} r_{k+1}^- c_{k+1}^- + x_{k+1} E_d(z_{k+1}),$$

$$e^{-\kappa_k^+(z_{k+1}-z_k)} r_k^+ c_k^+ + c_k^- + y_k E_d(z_{k+1}) = r_{k+1}^+ c_{k+1}^+ + e^{\kappa_{k+1}^-(z_{k+1}-z_{k+2})} c_{k+1}^- + y_{k+1} E_d(z_{k+1}).$$

In order to solve this coupled system of equations, we follow Kylling et al. (1995) and Toon et al. (1989), who observed that it can be transformed to tri-diagonal form by eliminating  $c_{k+1}^-$  from the first equation,

$$e_k^+ (1 - r_k^+ r_{k+1}^-) c_k^+ + (r_k^- - r_{k+1}^-) c_k^- - (1 - r_{k+1}^+ r_{k+1}^-) c_{k+1}^+ = [x_{k+1} - x_k - (y_{k+1} - y_k) r_{k+1}^-] E_d(z_{k+1}), \quad (\text{B10})$$

and  $c_k^+$  from the second equation,

$$(1 - r_k^- r_k^+) c_k^- - (r_{k+1}^+ - r_k^+) c_{k+1}^+ - e_{k+1}^- (1 - r_{k+1}^- r_k^+) c_{k+1}^- = [y_{k+1} - y_k - (x_{k+1} - x_k) r_k^+] E_d(z_{k+1}), \quad (\text{B11})$$

where  $e_k^+ = e^{-\kappa_k^+(z_{k+1}-z_k)}$  and  $e_k^- = e^{-\kappa_k^-(z_{k+1}-z_k)}$ . The reduced system is solved explicitly using Gaussian elimination.

### Appendix C: Phytoplankton functional-type-specific absorption and scattering spectra

Phytoplankton total light absorption spectra shown in Fig. 1d were obtained for representative phytoplankton types in culture: Syn, *Synechococcus* WH7803 (Suggett et al., 2004); HLPro, *Prochlorococcus* MED4 (Moore et al., 1995); LLPro, *Prochlorococcus* SS120 (Moore et al., 1995); Cocco, *Emiliana huxleyi* (Suggett et al., 2007); SmEuk, *Isochrysis galbana* (Ahn et al., 1992); Diat, *Thalassiosira weissflogii* (Suggett et al., 2004); LgEuk, *Prorocentrum micans* (Ahn et al., 1992); Tricho, *Trichodesmium* sp. (Dupouy et al., 2008); Diaz, unicellular diazotroph absorption properties were assumed the same as Syn.

Total phytoplankton light scattering was also taken for representative phytoplankton types in culture, with every attempt to match types used for absorption: Syn, generic *Synechococcus* (Stramski et al., 2001, derived from Morel et al., 1993, and Stramski et al., 1995); HLPro and LLPro, *Prochlorococcus* (Stramski et al., 2001, derived from Morel et al., 1993, and Stramski et al., 1995); Cocco, *Emiliana huxleyi* (Stramski et al., 2001, where original data are from Ahn et al., 1992); SmEuk, *Isochrysis galbana* (Stramski et al., 2001, where original data are from Ahn et al., 1992); Diat, *Chaetoceros curvisetus* (Stramski et al., 2001, derived from Bricaud et al., 1988); LgEuk, *Prorocentrum micans* (Stramski et al., 2001, where original data are from Ahn et al., 1992); *Trichodesmium* sp. (Dupouy et al., 2008); Diaz, unicellular diazotroph scattering properties were assumed the same as Syn. Ratios of backward to forward scattering were obtained from Stramski et al. (2001), except for Tricho, which was derived from Subramaniam et al. (1999).

The absorption and scattering properties of the other optical constituents were also obtained from the literature, as outlined in the main text.

#### Appendix D: Inversion of AMT-15 light field

In order to estimate backscattering  $b_b$  from the observations made during AMT-15 we utilize the measured downwelling irradiance,  $E_{dn}$ , and upwelling, zenithward radiance,  $L_u$ . We use the procedure of Gordon and Boynton (1997, 1998) with the radiative transfer package DISORT, version 2.0 beta. We use the Gordon and Boynton (1997, 1998) parameterization rather than the quasi-analytical algorithm (Lee et al., 2002, 2007) since we are dealing with profiles and not surface water-leaving radiance.

Gordon and Boynton (1998) propose that  $R = E_u/E_{dn}$  and  $X = b_b/a$  are related as

$$3R(z) \approx \frac{\int_z^\infty X(z)q(z, z') dz'}{\int_z^\infty q(z, z') dz'},$$

where

$$q(z, z') = (E_{dn}(z')/E_{dn}(z))^2.$$

We drop  $E_{dn}(z)$  from numerator and denominator and discretize as

$$3R_i \approx \frac{\sum_{j=i}^\infty X_j q_j}{\sum_{j=i}^\infty q_j},$$

where

$$q_j = \int_{z_j}^{z_{j+1}} E_{dn}(z)^2 dz = \frac{E_j^2 - E_{j+1}^2}{2k_j}$$

and

$$k_j = \frac{1}{z_{j+1} - z_j} \ln \frac{E_j}{E_{j+1}}.$$

In order to solve for  $X$ , we write

$$3R_i \approx \frac{X_i q_i + 3R_{i+1} \sum_{j=i+1}^\infty q_j}{q_i + \sum_{j=i+1}^\infty q_j}$$

and get

$$X_i \approx 3R_i - 3(R_{i+1} - R_i) \frac{1}{q_i} \sum_{j=i+1}^\infty q_j.$$

For noisy data, this estimate of  $X$  may become negative. We drop the derivative term where this happens – i.e.  $X$  is approximated by  $3R$ .



**Acknowledgements.** We are grateful to NASA (NNX13AC34G), NERC (NE/H015930/2), NSF (OCE1434007, OCE1155295), and the Gordon and Betty Moore Foundation for funding. The work on AMT-15 was supported by NERC through the AMT consortium (NER/O/S/2001/00680). This is contribution number 262 of the AMT programme. Participation of A. E. Hickman in AMT-15 was funded by a NERC PhD studentship. We thank S. Alvain for making the PHYSAT data available to us. We appreciate the NASA GSFC website for the MODIS level 3 data used here, as well as the ocean productivity website at Oregon State University for primary production data, and the efforts of the MAREDAT team for the phytoplankton compilations. We would like to thank D. Stramski for phytoplankton absorption and scattering data for phytoplankton and detritus, and D. Suggett and L. Moore for additional phytoplankton absorption spectra. Thanks also to the Atlantic Meridional Transect (AMT) community, in particular J. Heywood and M. Zubkov for analytical flow cytometry measurements, L. Hay and G. Moore for optics data, A. Stubbins for aCDOM data, M. Woodward and K. Chamberlain for nutrient data, and A. Pattenden for assistance with Chl *a* and phytoplankton light absorption measurements. We appreciate the constructive comments and suggestions from E. Boss and an anonymous reviewer, which significantly improved this article. We also thank C. Follett, A. Mignot, and S. Sathyendranath for catching typos in the equations and tables.

Edited by: L. Cotrim da Cunha

## References

- Aas, E.: Two-stream irradiance model for deep waters, *Appl. Optics*, 26, 2095–2101, 1987.
- Ackleson, S. G., Balch, W. M., and Holligan, P. M.: Response of water-leaving radiance to particulate calcite and chlorophyll *a* concentrations: a model for Gulf of Maine coccolithophore blooms, *J. Geophys. Res.*, 99, 7483–7499, doi:10.1029/93JC02150, 1994.
- Ahn, Y.-H., Bricaud, A., and Morel, A.: Light backscattering efficiency and related properties of some phytoplankters, *Deep-Sea Res.*, 39, 1835–1855, 1992.
- Alvain, S., Moulin, C., Dandonneau, Y., and Loisel, H.: Seasonal distribution and succession of dominant phytoplankton groups in the global ocean: a satellite view, *Global Biogeochem. Cy.*, 22, GB3001, doi:10.1029/2007GB003154, 2008.
- Anderson, L.: On the hydrogen and oxygen content of marine phytoplankton, *Deep-Sea Res. Pt. I*, 42, 1675–1680, 1995.
- Arrigo, K. R. and Brown, C. W.: Impact of chromophoric dissolved organic matter on UV inhibition of primary productivity in the sea, *Mar. Ecol.-Prog. Ser.*, 140, 207–216, 1996.
- Babin, M., Morel, A., Claustre, H., Bricaud, A., Kolber, Z., and Falkowski, P. G.: Nitrogen- and irradiance-dependent variations of the maximum quantum yield of carbon fixation in eutrophic, mesotrophic and oligotrophic marine systems, *Deep-Sea Res. Pt. I*, 43, 1241–1272, 1996.
- Babin, M. A., Theriault, J.-C., Legendre, L., and Condal, A.: Extent of variations in the specific absorption coefficient for natural phytoplankton assemblages: Impact on estimation of primary production, *Limnol. Oceanogr.*, 38, 154–177, 1993.
- Balch, W. M. and Utgoff, P. E.: Potential interactions among ocean acidification, coccolithophores, and the optical properties of seawater, *Oceanography*, 22, 146–159, 2009.
- Barnard, A. H., Pegua, W. S., and Zaneveld, J. R. V.: Global relationships of the inherent optical properties of the oceans, *J. Geophys. Res.*, 103, 24955–24968, 1998.
- Behrenfeld, M. J. and Falkowski, P. G.: Photosynthetic rates derived from satellite-based chlorophyll concentration, *Limnol. Oceanogr.*, 42, 1–20, 1997.
- Berner, T., Dubinsky, Z., Wyman, K., and Falkowski, P. G.: Photoadaptation and the package effect in *Dunaliella-Tertiolecta (Chlorophyceae)*, *J. Phycol.*, 25, 70–78, 1989.
- Bidigare, R. R., Marra, J., Dickey, T. D., Iturriaga, R., Baker, K. S., Smith, R. C., and Pak, H.: Evidence for phytoplankton succession and chromatic adaptation in the Sargasso Sea during spring 1985, *Mar. Ecol.-Prog. Ser.*, 60, 113–122, 1990a.
- Bidigare, R. R., Ondrusek, M. E., Morrow, J. H., and Kiefer, D. A.: In-vivo absorption properties of algal pigments, *P. SPIE*, 1302, 290–302, doi:10.1117/12.21451, 1990b.
- Bissett, W. P., Carder, K. L., Walsh, J. J., and Dieterle, D. A.: Carbon cycling in the upper waters of the Sargasso Sea: II. Numerical simulation of apparent and inherent optical properties, *Deep-Sea Res. Pt. I*, 46, 271–317, 1999.
- Bissett, W. P., DeBra, S., and Dye, D.: Ecological Simulation (EcoSim) 2.0 Technical Description, Technical Document FERI-2004-0002-U.D., Florida Environmental Research Center, Tampa, FL, 27 pp., 2004.
- Bricaud, A., Babin, M., Claustre, H., Ras, J., and Tiede, F.: Light absorption properties and absorption budget of the Southeast Pacific waters, *J. Geophys. Res.*, 115, C08009, doi:10.1029/2009JC005517, 2010.
- Bricaud, A., Bedhomme, A.-L., and Morel, A.: Optical properties of diverse phytoplanktonic species: experimental results and theoretical interpretation, *J. Plankton Res.*, 10, 851–873, 1988.
- Bricaud, A., Morel, A., and Prieur, L.: Absorption by dissolved organic matter of the sea (yellow substance) in the UV and visible domains, *Limnol. Oceanogr.*, 26, 43–53, 1981.
- Buitenhuis, E. T., Li, W. K. W., Vaulot, D., Lomas, M. W., Landry, M. R., Partensky, F., Karl, D. M., Ulloa, O., Campbell, L., Jacquet, S., Lantoiné, F., Chavez, F., Macias, D., Gosselin, M., and McManus, G. B.: Picophytoplankton biomass distribution in the global ocean, *Earth Syst. Sci. Data*, 4, 37–46, doi:10.5194/essd-4-37-2012, 2012.
- Buitenhuis, E. T., Vogt, M., Moriarty, R., Bednaršek, N., Doney, S. C., Leblanc, K., Le Quééré, C., Luo, Y.-W., O'Brien, C., O'Brien, T., Peloquin, J., Schiebel, R., and Swan, C.: MAREDAT: towards a world atlas of MARine Ecosystem DATA, *Earth Syst. Sci. Data*, 5, 227–239, doi:10.5194/essd-5-227-2013, 2013.
- Campbell, J. W., Antoine, D., Armstrong, R., Arrigo, K., Balch, W., Barber, R., Behrenfeld, M., Bidigare, R., Bishop, J., Carr, M. E., Iverson, R., Kiefer, D., Lohrenz, S., Marra, J., Morel, A., Ryan, J., Vedernikov, V., Waters, K., Yentsch, C., and Yoder, J.: Comparison of algorithms for estimating ocean primary production from surface chlorophyll, temperature, and irradiance, *Global Biogeochem. Cy.*, 16, 9-1–9-15, doi:10.1029/2001GB001444, 2002.
- Carr, M.-E., Friedrichs, M. A. M., Schmeltz, M., Aita, M. N., Antoine, D., Arrigo, K. R., Asanuma, I., Aumont, O., Barber, R., Behrenfeld, M., Bidigare, R., Buitenhuis, E. T., Camp-

- bell, J., Ciotti, A., Dierssen, H., Dowell, M., Dunne, J., Esaias, W., Gentili, B., Gregg, W., Groom, S., Hoepffner, N., Ishizaka, J., Kameda, T., Le Quere, C., Lohrenz, S., Marra, J., Melin, F., Moore, K., Morel, A., Reddy, T. E., Ryan, J., Scardi, M., Smyth, T., Turpie, K., Tilstone, G., Waters, K., and Yamanaka, Y.: A comparison of global estimates of marine primary production from ocean color, *Deep-Sea Res. Pt. II*, 53, 741–770, 2006.
- Cermeño, P., Dutkiewicz S., Harris, R. P., Follows, M., Schofield, O., and Falkowski, P. G.: The role of nutricline depth in regulating the ocean carbon cycle, *P. Natl. Acad. Sci. USA*, 105, 20344–20349, 2008.
- Chang, G. C. and Dickey, T. D.: Partitioning in situ total spectral absorption by use of moored spectral absorption-attenuation meters, *Appl. Optics*, 38, 3876–3887, 1999.
- Ciotti, A. M. and Bricaud, A.: Retrievals of a size parameter for phytoplankton and spectral light absorption by colored detrital matter from water-leaving radiances at SeaWiFS channels in a continental shelf region off Brazil, *Limnol. Oceanogr.-Meth.*, 4, 237–253, 2006.
- Dall’Olmo, G., Boss, E., Behrenfeld, T. K., and Westberry, M. J.: Particulate optical scattering coefficients along an Atlantic Meridional Transect, *Opt. Express*, 20, 21532–21551, 2012.
- Dupouy, C., Neveux, J., Dirberg, G., Rattgers, R., Barboza Tenario, M. M., and Ouillon, S.: Bio-optical properties of the marine cyanobacteria *Trichodesmium* spp., *J. Appl. Remote Sens.*, 2, 023503, doi:10.1117/1.2839036, 2008.
- Dutkiewicz, S., Follows, M. J., and Parekh, P.: Interactions of the iron and phosphorus cycles: a three-dimensional model study, *Global Biogeochem. Cy.*, 19, GB1021, doi:10.1029/2004GB002342, 2005.
- Dutkiewicz, S., Follows, M. J., and Bragg, J.: Modeling the coupling of ocean ecology and biogeochemistry, *Global Biogeochem. Cy.*, 23, GB4017, doi:10.1029/2008GB003405, 2009.
- Dutkiewicz, S., Ward, B. A., Monteiro, F., and Follows, M. J.: Interconnection between nitrogen fixers and iron in the Pacific Ocean: theory and numerical model, *Global Biogeochem. Cy.*, 26, GB1012, doi:10.1029/2011GB004039, 2012.
- Dutkiewicz, S., Ward, B. A., Scott, J. R., and Follows, M. J.: Understanding predicted shifts in diazotroph biogeography using resource competition theory, *Biogeosciences*, 11, 5445–5461, doi:10.5194/bg-11-5445-2014, 2014.
- Elrod, V. A., Berelson, W. M., Coale, K. H., and Johnson, K. S.: The flux of iron from continental shelf sediments: A missing source for global budgets, *Geophys. Res. Lett.*, 31, L12307, doi:10.1029/2004GL020216, 2006.
- Eppley, R. W.: Temperature and phytoplankton growth in the sea, *Fish. B.*, 70, 1063–1085, 1972.
- Fennel, K. and Boss, E.: Subsurface maxima of phytoplankton and chlorophyll: Steady-state solutions from a simple model, *Limnol. Oceanogr.*, 48, 1521–1534, 2003.
- Follows, M. J., Ito, T., and Dutkiewicz, S.: A compact and accurate carbonate chemistry solver for ocean biogeochemistry models, *Ocean Model.*, 12, 290–301, 2006.
- Follows, M. J., Dutkiewicz, S., Grant, S., and Chisholm, S. W.: Emergent biogeography of microbial communities in a model ocean, *Science*, 315, 1843–1846, doi:10.1126/science.1138544, 2007.
- Fujii, M., Boss, E., and Chai, F.: The value of adding optics to ecosystem models: a case study, *Biogeosciences*, 4, 817–835, doi:10.5194/bg-4-817-2007, 2007.
- García, H. E. and Gordon, L. I.: Oxygen solubility in seawater: better fitting equations, *Limnol. Oceanogr.*, 37, 1307–1312, 1992.
- García, H. E., Locarnini, R. A., Boyer, T. P., and Antonov, J. I.: *World Ocean Atlas 2005*, vol. 4, Nutrients (Phosphate, Nitrate, Silicate), NOAA Atlas NESDIS, vol. 64, 396 pp., edited by: Levitus, S., NOAA, Silver Spring, Md., 2006.
- Ge, Y., Gordon, H. R., and Voss, K. J.: Simulations of inelastic-scattering contributions to the irradiance field in the ocean: variations in Fraunhofer line depths, *Appl. Optics*, 32, 4028–4036, 1993.
- Geider, R. J., MacIntyre, H. L., and Kana, T. M.: Dynamic model of phytoplankton growth and acclimation: responses of the balanced growth rate and the chlorophyll a:carbon ratio to light, nutrient-limitation and temperature. *Mar. Ecol.-Prog. Ser.*, 148, 187–200, 1997.
- Geider, R. J., MacIntyre, H. L., and Kana, T. M.: A dynamic regulatory model of photoacclimation to light, nutrient and temperature, *Limnol. Oceanogr.*, 43, 679–694, 1998.
- Gordon, H. R. and Boynton, G. C.: Radiance-irradiance inversion algorithm for estimating the absorption and backscattering coefficients of natural waters: homogeneous waters, *Appl. Optics*, 36, 2636–2641, 1997.
- Gordon, H. R. and Boynton, G. C.: Radiance-irradiance inversion algorithm for estimating the absorption and backscattering coefficients of natural waters: vertically stratified water bodies, *Appl. Optics*, 37, 3886–3896, 1998.
- Gregg, W. W.: *A Coupled Ocean–Atmosphere Radiative Model for Global Ocean Biogeochemical Model*, NASA Technical Report Series on Global Modeling and Data Assimilation, NASA/TM-2002-104606, 22, NASA, Goddard Space Flight Center, Greenbelt, MD, 2002.
- Gregg, W. W. and Casey, N. W.: Modeling coccolithophores in the global ocean, *Deep-Sea Res. Pt. II*, 54, 447–477, 2007.
- Gregg, W. W. and Casey, N. W.: Skill assessment of a spectral ocean–atmosphere radiative model, *J. Marine Syst.*, 76, 49–63, doi:10.1016/j.jmarsys.2008.05.007, 2009.
- Heywood, J. L., Zubkov, M. V., Tarran, G. A., Fuchs, B. M., and Holligan, P. M.: Prokaryoplankton standing stocks in oligotrophic gyre and equatorial provinces of the Atlantic Ocean: evaluation of inter-annual variability, *Deep-Sea Res. Pt. II*, 53, 1530–1547, 2006.
- Hickman, A. E., Dutkiewicz, S., Williams, R. G., and Follows, M. J.: Modelling the effects of chromatic adaptation on phytoplankton community structure in the oligotrophic ocean, *Mar. Ecol.-Prog. Ser.*, 406, 1–17, doi:10.3354/meps08588, 2010.
- Holling, C. S.: The components of predation as revealed by a study of small mammal predation on the European pine sawfly, *Can. Entomol.*, 91, 293–320, 1959.
- Honeyman, B., Balistreri, L., and Murray, J.: Oceanic trace metal scavenging and the importance of particle concentration, *Deep-Sea Res. Pt. I*, 35, 227–246, 1988.
- Huisman, J. and Weissing, F.: Competition for nutrients and light in a mixed water column: a theoretical analysis, *Am. Nat.*, 146, 536–564, 1995.
- IOCCG Report 5: Remote Sensing of Inherent Optical Properties: Fundamentals, Tests of Algorithms, and Applications, edited

- by: Lee, Z.-P., International Ocean-Colour Coordinating Group, Dartmouth, Nova Scotia, Canada, 126 pp., 2006.
- IOCCG Report 9: Partition of the Ocean into Ecological Provinces: Role of Ocean-Colour Radiometry, edited by: Dowell, M. and Platt, T., International Ocean-Colour Coordinating Group, Dartmouth, Nova Scotia, Canada, 98 pp., 2009.
- IOCCG Report 15: Phytoplankton Functional Types from Space, edited by: Sathyendranath, S., International Ocean-Colour Coordinating Group, Dartmouth, Nova Scotia, Canada, 156 pp., 2014.
- Irwin, A. J., Finkel, Z. V., Schofield, O. M. E., and Falkowski, P. G.: Scaling-up from nutrient physiology to the size-structure of phytoplankton communities, *J. Plankton Res.*, 28, 459–471, 2006.
- Jerlov, N. G.: Influence of suspended and dissolved matter on the transparency of sea water, *Tellus*, 5, 59–65, 1953.
- Kettle, H. and Merchant, C. J.: Modeling ocean primary production: sensitivity to spectral resolution of attenuation and absorption of light, *Prog. Oceanogr.*, 78, 135–146, 2008.
- Kirk, J. T. O.: *Light and Photosynthesis in Aquatic Ecosystems*, Cambridge University Press, Cambridge, 1994.
- Kitidis, V., Stubbins, A. P., Uher, G., Upstill Goddard, R. C., Law, C. S., and Woodward, E. M. S.: Variability of chromophoric organic matter in surface waters of the Atlantic Ocean, *Deep-Sea Res. Pt. II*, 53, 1666–1684, 2006.
- Kleypas, J. A. and Doney, S. C.: *Nutrients, Chlorophyll, Primary Production and Related Biogeochemical Properties in the Ocean Mixed Layer – a Compilation of Data Collected at Nine JGOFS Sites*, NCAR Technical Note Change to TN-447+STR, National Center for Atmospheric Research, Boulder, CO, USA, 55 pp., 2001.
- Kooijman, S. A. L. M.: *Dynamic Energy and Mass Budget in Biological Systems*, Cambridge University Press, Cambridge, 2000.
- Kylling, A., Stamnes, K., and Tsay, S.-C.: A reliable and efficient two-stream algorithm for spherical radiative transfer: documentation of accuracy in realistic layered media, *J. Atmos. Chem.*, 21, 115–150, 1995.
- Leblanc, K., Arístegui, J., Armand, L., Assmy, P., Beker, B., Bode, A., Breton, E., Cornet, V., Gibson, J., Gosselin, M.-P., Kopczynska, E., Marshall, H., Peloquin, J., Piontkovski, S., Poulton, A. J., Quéguiner, B., Schiebel, R., Shipe, R., Stefels, J., van Leeuwe, M. A., Varela, M., Widdicombe, C., and Yallop, M.: A global diatom database – abundance, biovolume and biomass in the world ocean, *Earth Syst. Sci. Data*, 4, 149–165, doi:10.5194/essd-4-149-2012, 2012.
- Lee, Z. P., Carder, K. L., and Arnone, R. A.: Deriving inherent optical properties from water color: a multi-band quasi-analytical algorithm for optically deep waters, *Appl. Optics*, 41, 5755–5772, 2002.
- Lee, Z. P., Weidemann, A., Kindle, J., Arnone, R., Carder, K. L., and Davis, C.: Euphotic zone depth: its derivation and implication to ocean-color remote sensing, *J. Geophys. Res.*, 112, C03009, doi:10.1029/2006JC003802, 2007.
- Loisel, H.: Seasonal and inter-annual variability of particulate organic matter in the global ocean, *Geophys. Res. Lett.*, 29, 2196, doi:10.1029/2002GL015948, 2002.
- Luo, C., Mahowald, N., Bond, T., Chuang, P. Y., Artaxo, P., Siefert, R., Chen, Y., and Schauer, J.: Combustion iron distribution and deposition, *Global Biogeochem. Cy.*, 22, GB1012, doi:10.1029/2007GB002964, 2008.
- Luo, Y.-W., Doney, S. C., Anderson, L. A., Benavides, M., Berman-Frank, I., Bode, A., Bonnet, S., Boström, K. H., Böttjer, D., Capone, D. G., Carpenter, E. J., Chen, Y. L., Church, M. J., Dore, J. E., Falcón, L. I., Fernández, A., Foster, R. A., Furuya, K., Gómez, F., Gundersen, K., Hynes, A. M., Karl, D. M., Kitajima, S., Langlois, R. J., LaRoche, J., Letelier, R. M., Marañón, E., McGillicuddy Jr., D. J., Moisander, P. H., Moore, C. M., Mouriño-Carballido, B., Mulholland, M. R., Needoba, J. A., Orcutt, K. M., Poulton, A. J., Rahav, E., Raimbault, P., Rees, A. P., Riemann, L., Shiozaki, T., Subramaniam, A., Tyrrell, T., Turk-Kubo, K. A., Varela, M., Villareal, T. A., Webb, E. A., White, A. E., Wu, J., and Zehr, J. P.: Database of diazotrophs in global ocean: abundance, biomass and nitrogen fixation rates, *Earth Syst. Sci. Data*, 4, 47–73, doi:10.5194/essd-4-47-2012, 2012.
- MacIntyre, H., Kana, T., Anning, T., and Geider, R.: Photoacclimation of photosynthesis irradiance response curves and photosynthetic pigments in microalgae and cyanobacteria, *J. Phycol.*, 38, 17–38, 2002.
- Maritorea, S., Siegel, D. A., and Peterson, A. R.: Optimization of a semianalytical ocean color model for global-scale applications, *App. Optics*, 41, 2705–2714, 2002.
- Marshall, J., Adcroft, A., Hill, C. N., Perelman, L., and Heisey, C.: A finite-volume, incompressible Navier–Stokes model for studies of the ocean on parallel computers, *J. Geophys. Res.*, 102, 5753–5766, 1997.
- Martinez-Vicente, V., Dall’Olmo, G., Tarran, G., Boss, E., and Sathyendranath, S.: Optical backscattering is correlated with phytoplankton carbon across the Atlantic Ocean, *J. Geophys. Res.*, 40, 1154–1158, doi:10.1002/grl.50252, 2013.
- Matsumoto, K., Sarmiento, J. L., Key, R. M., Aumont, O., Bullister, J. L., Caldeira, K., Campin, J.-M., Doney, S. C., Drange, H., Dutay, J.-C., Follows, M. J., Gao, Y., Gnanadesikan, A., Gruber, N., Ishida, A., Joos, F., Lindsay, K., Maier-Reimer, E., Marshall, J. C., Matear, R. J., Monfray, P., Mouchet, A., Najjar, R., Plattner, G.-K., Schlitzer, R., Slater, R., Swathi, P. S., Totterdell, I. J., Weirig, M.-F., Yamanaka, Y., Yool, A., and Orr, J. C.: Evaluation of ocean carbon cycle models with data-based metrics, *Geophys. Res. Lett.*, 31, L07303, doi:10.1029/2003GL018970, 2004.
- Mobley, C. D.: Fast light calculations for ocean ecosystem and inverse models, *Opt. Express*, 19, 1827–1894, 2011.
- Mobley, C. D., Sundman, L. K., Bissett, W. P., and Cahill, B.: Fast and accurate irradiance calculations for ecosystem models, *Biogeosciences Discuss.*, 6, 10625–10662, doi:10.5194/bgd-6-10625-2009, 2009.
- Moisander, P. H., Zhang, R., Boyle, E. A., Hewson, I., Montoya, J. P., and Zehr, J. P.: Analogous nutrient limitations in unicellular diazotrophs and *Prochlorococcus* in the South Pacific Ocean, *ISME J.*, 6, 733–744, 2012.
- Monteiro, F. M., Follows, M. J., and Dutkiewicz, S.: Distribution of diverse nitrogen fixers in the global ocean, *Global Biogeochem. Cy.*, 24, GB3017, doi:10.1029/2009GB003731, 2010.
- Moore, L. R. and Chisholm, S. W.: Photophysiology of the marine cyanobacterium *Prochlorococcus*: ecotypic differences among cultured isolates, *Limnol. Oceanogr.*, 43, 628–638, 1999.
- Moore, L. R., Goericke, R., and Chisholm, S. W.: Comparative physiology of *Synechococcus* and *Prochlorococcus*: influence of light and temperature on growth, pigments, fluorescence and absorptive properties, *Mar. Ecol.-Prog. Ser.*, 116, 259–275, 1995.

- Morel, A.: Optical properties of pure water and pure sea water, in: *Optical Aspects of Oceanography*, edited by: Jerlov, N. G. and Nielson, E. S., Academic Press, New York, 1–24, 1974.
- Morel, A.: Are the empirical laws describing the bio-optical properties of Case 1 waters consistent and internally compatible?, *J. Geophys. Res.*, 114, C01016, doi:10.1029/2008JC004803, 2009.
- Morel, A. and Ahn, Y.-H.: Optics of heterotrophic nanoflagellates and ciliates: A tentative assessment of their scattering role in oceanic waters compared to those of bacterial and algal cells, *J. Mar. Res.*, 49, 177–202, 1991.
- Morel, A., Ahn, Y.-H., Partensky, F., Vaulot, D., and Claustre, H.: *Prochlorococcus* and *Synechococcus*: a comparative study of their optical properties in relation to their size and pigmentation, *J. Mar. Res.*, 51, 617–649, 1993.
- Morel, A., Antoine, D., and Gentili, B.: Bidirectional reflectance of oceanic waters: accounting for Raman emission and varying particle scattering phase function, *Appl. Optics*, 41, 6289–6306, 2002.
- Morel, A., Gentili, B., Claustre, H., Babin, M., Bricaud, A., Ras, J., and Tieche, F.: Optical properties of the “clearest” natural waters, *Limnol. Oceanogr.*, 52, 217–229, 2007.
- Morel, A., Claustre, H., and Gentili, B.: The most oligotrophic subtropical zones of the global ocean: similarities and differences in terms of chlorophyll and yellow substance, *Biogeosciences*, 7, 3139–3151, doi:10.5194/bg-7-3139-2010, 2010.
- Moriarty, R. and O’Brien, T. D.: Distribution of mesozooplankton biomass in the global ocean, *Earth Syst. Sci. Data*, 5, 45–55, doi:10.5194/essd-5-45-2013, 2013.
- Mouw, C. B., Yoder, J. A., and Doney, S. C.: Impact of phytoplankton community size on a linked global ocean optical ecosystem model, *J. Marine Syst.*, 89, 61–75, 2012.
- Nelson, N. B. and Siegel, D. A.: The global distribution and dynamics of chromophoric dissolved organic matter, *Annu. Rev. Mar. Sci.*, 5, 447–476, doi:10.1146/annurev-marine-120710-100751, 2013.
- O’Brien, C. J., Peloquin, J. A., Vogt, M., Heinle, M., Gruber, N., Ajani, P., Andruleit, H., Aristegui, J., Beaufort, L., Estrada, M., Karentz, D., Kopczynska, E., Lee, R., Poulton, A. J., Pritchard, T., and Widdicombe, C.: Global marine plankton functional type biomass distributions: coccolithophores, *Earth Syst. Sci. Data*, 5, 259–276, doi:10.5194/essd-5-259-2013, 2013.
- Parekh, P., Follows, M. J., and Boyle, E. A.: Modeling the global ocean iron cycle, *Global Biogeochem. Cy.*, 18, GB1002, doi:10.1029/2003GB002061, 2004.
- Parekh, P., Follows, M. J., and Boyle, E. A.: Decoupling of iron and phosphate in the global ocean, *Global Biogeochem. Cy.*, 19, GB2020, doi:10.1029/2004GB002280, 2005.
- Pope, R. M. and Fry, E. S.: Absorption spectrum (380–700 nm) of pure water. II. Integrating cavity measurements, *Appl. Optics*, 36, 8710–8723, 1997.
- Prowse, A. E. F., Pahlow, M., Dutkiewicz, S., Follows, M. J., and Oschlies, A.: Top-down control of marine phytoplankton diversity in a global ecosystem model, *Prog. Oceanogr.*, 101, 1–13, doi:10.1016/j.pocean.2011.11.016, 2012.
- Radic, A., Lacan, F., and Murray, J. W.: Iron isotopes in the seawater of the equatorial Pacific Ocean: new constraints for the oceanic iron cycle, *Earth Planet. Sc. Lett.*, 306, 1–10, 2011.
- Redfield, A. C.: On the proportions of organic derivations in sea water and their relation to the composition of plankton, in: *James Johnstone Memorial Volume*, edited by: Daniel, R. J., University Press of Liverpool, Liverpool, UK, 177–192, 1934.
- Sarmiento, J. L., Gruber, N., Brzezinski, M., and Dunne, J. P.: High-latitude controls of thermocline nutrients and low latitude biological productivity, *Nature*, 427, 56–60, 2004.
- Sathyendranath, S. and Platt, T.: Spectral effects in bio-optical control on the ocean system, *Oceanologia*, 49, 5–39, 2007.
- Simeon, J., Roesler, C., Pegau, W. S., and Dupouy, C.: Sources of spatial variability in light absorbing components along an equatorial transect from 165° E to 150° W, *J. Geophys. Res.*, 108, 3333, doi:10.1029/2002JC001613, 2003.
- Slemons, L., Gorgues, T., Aumont, O., Menkes, C., and Murray, J. W.: Biogeochemical impact of a model western iron source in the Pacific Equatorial Undercurrent, *Deep-Sea Res. Pt. I*, 56, 2115–2128, 2009.
- Smith, R. C. and Baker, K. S.: Optical properties of the clearest natural water (200–800 nm), *Appl. Optics*, 20, 177–184, 1981.
- Steele, J. H. and Henderson, E. W.: The role of predation in plankton models, *J. Plankton Res.*, 14, 157–172, 1992.
- Stomp, M., Huisman, J., de Jongh, F., Veraart, A. J., Gerla, D., Rijkeboer, M., Ibelings, B. W., Wollenzien, U. I. A., and Stal, L. J.: Adaptive divergence in pigment composition promotes phytoplankton biodiversity, *Nature*, 432, 104–107, 2004.
- Stubbins, A., Uher, G., Law, C. S., Mopper, K., Robinson, C., and Upstill-Goddard, R. C.: Open-ocean carbon monoxide photoproduction, *Deep-Sea Res. Pt. II*, 53, 1695–1705, doi:10.1016/j.dsr2.2006.05.011, 2006.
- Stramski, D., Sciandra, A., and Claustre, H.: Effects of temperature, nitrogen, and light limitation on the optical properties of the marine diatom *Thalassiosira pseudonana*, *Limnol. Oceanogr.*, 47, 392–403, 2002.
- Stramski, D., Boss, E., Bogucki, D., and Voss, K. J.: The role of seawater constituents in light backscattering in the ocean, *Prog. Oceanogr.*, 61, 27–56, doi:10.1016/j.pocean.2004.07.001, 2004.
- Stramski, D., Bricaud, A., and Morel, A.: Modeling the inherent optical properties of the ocean based on the detailed composition of the planktonic community, *Appl. Optics*, 40, 2929–2945, 2001.
- Stramski, S., Shalapyonok, A., and Reynolds, R. A.: Optical characterization of the oceanic unicellular cyanobacterium *Synechococcus* grown under a day-night cycle in natural irradiance, *J. Geophys. Res.*, 100, 13295–13307, 1995.
- Subramaniam, A., Carpenter, E. J., and Falkowski, P. G.: Bio-optical properties of the marine diazotrophic cyanobacteria *Trichodesmium* spp. II. A reflectance model for remote sensing, *Limnol. Oceanogr.*, 44, 618–627, 1999.
- Suggett, D., MacIntyre, H., and Geider, R.: Evaluation of biophysical and optical determinations of light absorption by photosystem II in phytoplankton, *Limnol. Oceanogr.-Meth.*, 2, 316–332, 2004.
- Suggett, D. J., Le Floch, E., Harris, G. N., Leonardos, N., and Geider, R. J.: Different strategies of photoacclimation by two strains of *Emiliania huxleyi* (Haptophyta), *J. Phycol.*, 43, 1209–1222, doi:10.1111/j.1529-8817.2007.00406.x, 2007.
- Suggett, D. J., Moore, C. M., Hickman, A. E., and Geider, R. J.: Interpretation of fast repetition rate (FRR) fluorescence: signatures of phytoplankton community structure versus physiological state, *Mar. Ecol.-Prog. Ser.*, 376, 1–19, 2009.

- Szeto, M., Werdell, P. J., Moore, T. S., and Campbell, J. W.: Are the world's oceans optically different?, *J. Geophys. Res.*, 116, C00H04, doi:10.1029/2011JC007230, 2011.
- Tagliabue, A., Mtshali, T., Aumont, O., Bowie, A. R., Klunder, M. B., Roychoudhury, A. N., and Swart, S.: A global compilation of dissolved iron measurements: focus on distributions and processes in the Southern Ocean, *Biogeosciences*, 9, 2333–2349, doi:10.5194/bg-9-2333-2012, 2012.
- Tarran G. A., Heywood, J. L., and Zubkov, M. V.: Latitudinal changes in the standing stocks of nano- and picoeukaryotic phytoplankton in the Atlantic Ocean, *Deep-Sea Res. Pt. II*, 53, 1516–1529, 2006.
- Toon, O. B., McKay, C. P., and Ackerman, T. P.: Rapid calculation of radiative heating rates and photodissociation rates in inhomogeneous multiple scattering atmospheres, *J. Geophys. Res.*, 94, 16287–16301, 1989.
- Ullman, D. J., McKinley, G. A., Bennington, V., and Dutkiewicz, S.: Trends in the North Atlantic carbon sink: 1992–2006, *Global Biogeochem. Cy.*, 23, GB4011, doi:10.1029/2008GB003383, 2009.
- Voss, K. J., Morel, A., and Antoine, D.: Detailed validation of the bidirectional effect in various Case 1 waters for application to ocean color imagery, *Biogeosciences*, 4, 781–789, doi:10.5194/bg-4-781-2007, 2007.
- Wang, X. J., Behrenfeld, M., Le Borgne, R., Murtugudde, R., and Boss, E.: Regulation of phytoplankton carbon to chlorophyll ratio by light, nutrients and temperature in the Equatorial Pacific Ocean: a basin-scale model, *Biogeosciences*, 6, 391–404, doi:10.5194/bg-6-391-2009, 2009.
- Wanninkhof, R.: Relationship between wind speed and gas exchange over the ocean, *J. Geophys. Res.*, 97, 7373–7382, 1992.
- Ward, B. A., Dutkiewicz, S., Jahn, O., and Follows, M. J.: A size structured food-web model for the global ocean, *Limnol. Oceanogr.*, 57, 1877–1891, 2012.
- Ward, B. A., Dutkiewicz, S., Moore, C. M., and Follows, M. J.: Nutrient supply ratios define ocean biomes, *Limnol. Oceanogr.*, 58, 2059–2075, 2013.
- Werdell, P. J., Franz, B. A., Bailey, S. W., Feldman, G. C., Boss, E., Brando, V. E., Dowell, M., Hirata, T., Lavender, S. J., Lee, Z., Loisel, H., Maritorena, S., Mélin, F., Moore, T. S., Smyth, T. J., Antoine, D., Devred, E., d'Andon, O. H. F., and Mangin, A.: Generalized ocean color inversion model for retrieving marine inherent optical properties, *Appl. Optics*, 52, 2019–2037.
- Wunsch, C. and Heimbach, P.: Practical global ocean state estimation, *Physica D*, 230, 197–208, 2007.
- Xiu, P. and Chai, F.: Connections between physical, optical and biogeochemical processes in the Pacific Ocean, *Prog. Oceanogr.*, 122, 30–53, 2014.
- Zhang, X. and Hu, L.: Estimating scattering of pure water from density fluctuation of the refractive index, *Opt. Express*, 17, 1671–1678, 2009.
- Zheng, G. and Stramski, D.: A model based on stacked-constraints approach for partitioning the light absorption coefficient of seawater into phytoplankton and non-phytoplankton components, *J. Geophys. Res.*, 118, 2155–2174, doi:10.1002/jgrc.20115, 2013.
- Zubkov, M. V., Sleigh, M. A., Tarran, G. A., Burkill, P. H., and Leakey, R. J. G.: Picoplanktonic community structure on an Atlantic transect from 50° to 50° S, *Deep-Sea Res. Pt. I*, 45, 1339–1355, 1998.

## MIT Joint Program on the Science and Policy of Global Change - REPRINT SERIES

FOR THE COMPLETE LIST OF REPRINT TITLES: <http://globalchange.mit.edu/research/publications/reprints>

**2014-20 The ocean's role in the transient response of climate to abrupt greenhouse gas forcing**, Marshall, J., J.R. Scott, K.C. Armour, J.-M. Campin, M. Kelley and A. Romanou, *Climate Dynamics*, online first (doi: 10.1007/s00382-014-2308-0) (2014)

**2014-21 The ocean's role in polar climate change: asymmetric Arctic and Antarctic responses to greenhouse gas and ozone forcing**, Marshall, J., K.C. Armour, J.R. Scott, Y. Kostov, U. Hausmann, D. Ferreira, T.G. Shepherd and C.M. Bitz, *Philosophical Transactions of the Royal Society A*, 372: 20130040 (2014).

**2014-22 Emissions trading in China: Progress and prospects**, Zhang, D., V.J. Karplus, C. Cassisa and X. Zhang, *Energy Policy*, 75(December): 9–16 (2014)

**2014-23 The mercury game: evaluating a negotiation simulation that teaches students about science-policy interactions**, Stokes, L.C. and N.E. Selin, *Journal of Environmental Studies & Sciences*, online first (doi:10.1007/s13412-014-0183-y) (2014)

**2014-24 Climate Change and Economic Growth Prospects for Malawi: An Uncertainty Approach**, Arndt, C., C.A. Schlosser, K.Strzepek and J. Thurlow, *Journal of African Economies*, 23(Suppl 2): ii83–ii107 (2014)

**2014-25 Antarctic ice sheet fertilises the Southern Ocean**, Death, R., J.L.Wadham, F. Monteiro, A.M. Le Brocq, M. Tranter, A. Ridgwell, S. Dutkiewicz and R. Raiswell, *Biogeosciences*, 11, 2635–2644 (2014)

**2014-26 Understanding predicted shifts in diazotroph biogeography using resource competition theory**, Dutkiewicz, S., B.A. Ward, J.R. Scott and M.J. Follows, *Biogeosciences*, 11, 5445–5461 (2014)

**2014-27 Coupling the high-complexity land surface model ACASA to the mesoscale model WRF**, L. Xu, R.D. Pyles, K.T. Paw U, S.H. Chen and E. Monier, *Geoscientific Model Development*, 7, 2917–2932 (2014)

**2015-1 Double Impact: Why China Needs Separate But Coordinated Air Pollution and CO<sub>2</sub> Reduction Strategies**, Karplus, V.J., *Paulson Papers on Energy and Environment* (2015)

**2015-2 Behavior of the aggregate wind resource in the ISO regions in the United States**, Gunturu, U.B. and C.A. Schlosser, *Applied Energy*, 144(April): 175–181 (2015)

**2015-3 Analysis of coastal protection under rising flood risk**, Lickley, M.J., N. Lin and H.D. Jacoby, *Climate Risk Management*, 6(2014): 18–26 (2015)

**2015-4 Benefits of greenhouse gas mitigation on the supply, management, and use of water resources in the United States**, K. Strzepek et al., *Climatic Change*, online first (doi: 10.1007/s10584-014-1279-9) (2015)

**2015-5 Modeling Regional Transportation Demand in China and the Impacts of a National Carbon Policy**, Kishimoto, P.N., D. Zhang, X. Zhang and V.J. Karplus, *Transportation Research Record* 2454: 1-11 (2015)

**2015-6 Impacts of the Minamata Convention on Mercury Emissions and Global Deposition from Coal-Fired Power Generation in Asia**, Giang, A., L.C. Stokes, D.G. Streets, E.S. Corbitt and N.E. Selin, *Environmental Science & Technology*, online first (doi: 10.1021/acs.est.5b00074) (2015)

**2015-7 Climate change policy in Brazil and Mexico: Results from the MIT EPPA model**, Octaviano, C., S. Paltsev and A. Gurgel, *Energy Economics*, online first (doi: 10.1016/j.eneco.2015.04.007) (2015)

**2015-8 Changes in Inorganic Fine Particulate Matter Sensitivities to Precursors Due to Large-Scale US Emissions Reductions**, Holt, J., N.E. Selin and S. Solomon, *Environmental Science & Technology*, 49(8): 4834–4841 (2015)

**2015-9 Natural gas pricing reform in China: Getting closer to a market system?** Paltsev and Zhang, *Energy Policy*, 86(2015): 43–56 (2015)

**2015-10 Climate Change Impacts on U.S. Crops**, Blanc and Reilly, *Choices Magazine*, 30(2): 1–4 (2015)

**2015-11 Impacts on Resources and Climate of Projected Economic and Population Growth Patterns**, Reilly, *The Bridge*, 45(2): 6–15 (2015)

**2015-12 Carbon taxes, deficits, and energy policy interactions**, Rausch and Reilly, *National Tax Journal*, 68(1): 157–178 (2015)

**2015-13 U.S. Air Quality and Health Benefits from Avoided Climate Change under Greenhouse Gas Mitigation**, Garcia-Menendez, F., R.K. Saari, E. Monier and N.E. Selin, *Environ. Sci. Technol.* 49(13): 7580–7588 (2015)

**2015-14 Modeling intermittent renewable electricity technologies in general equilibrium models**, Tapia-Ahumada, K., C. Octaviano, S. Rausch and I. Pérez-Arriaga, *Economic Modelling* 51(December): 242–262 (2015)

**2015-15 Quantifying and monetizing potential climate change policy impacts on terrestrial ecosystem carbon storage and wildfires in the United States**, Mills, D., R. Jones, K. Carney, A. St. Juliana, R. Ready, A. Crimmins, J. Martinich, K. Shouse, B. DeAngelo and E. Monier, *Climatic Change* 131(1): 163–178 (2014)

**2015-16 Capturing optically important constituents and properties in a marine biogeochemical and ecosystem model**, Dutkiewicz, S., A.E. Hickman, O. Jahn, W.W. Gregg, C.B. Mouw and M.J. Follows, *Biogeosciences* 12, 4447–4481 (2015)